



Texas Department of  
**Family and Protective Services**

---

Senate Select Committee on  
Child Protective Services

March 17, 2022

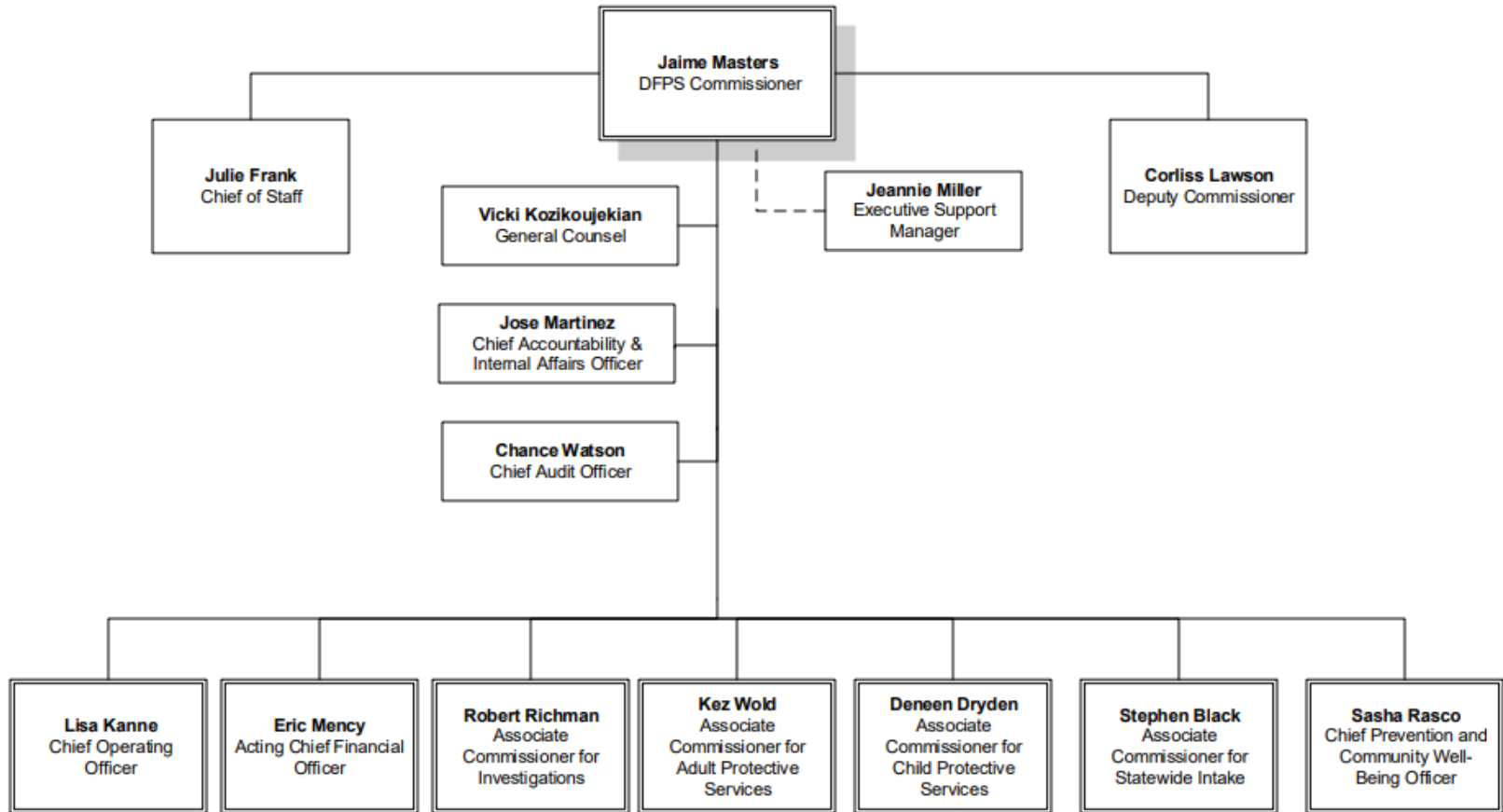
---



- ❖ DFPS Structure
- ❖ Statewide Intake
- ❖ Child Protective Investigations
- ❖ Child Protective Services
- ❖ Timeline
- ❖ Process Improvements



# DFPS STRUCTURE



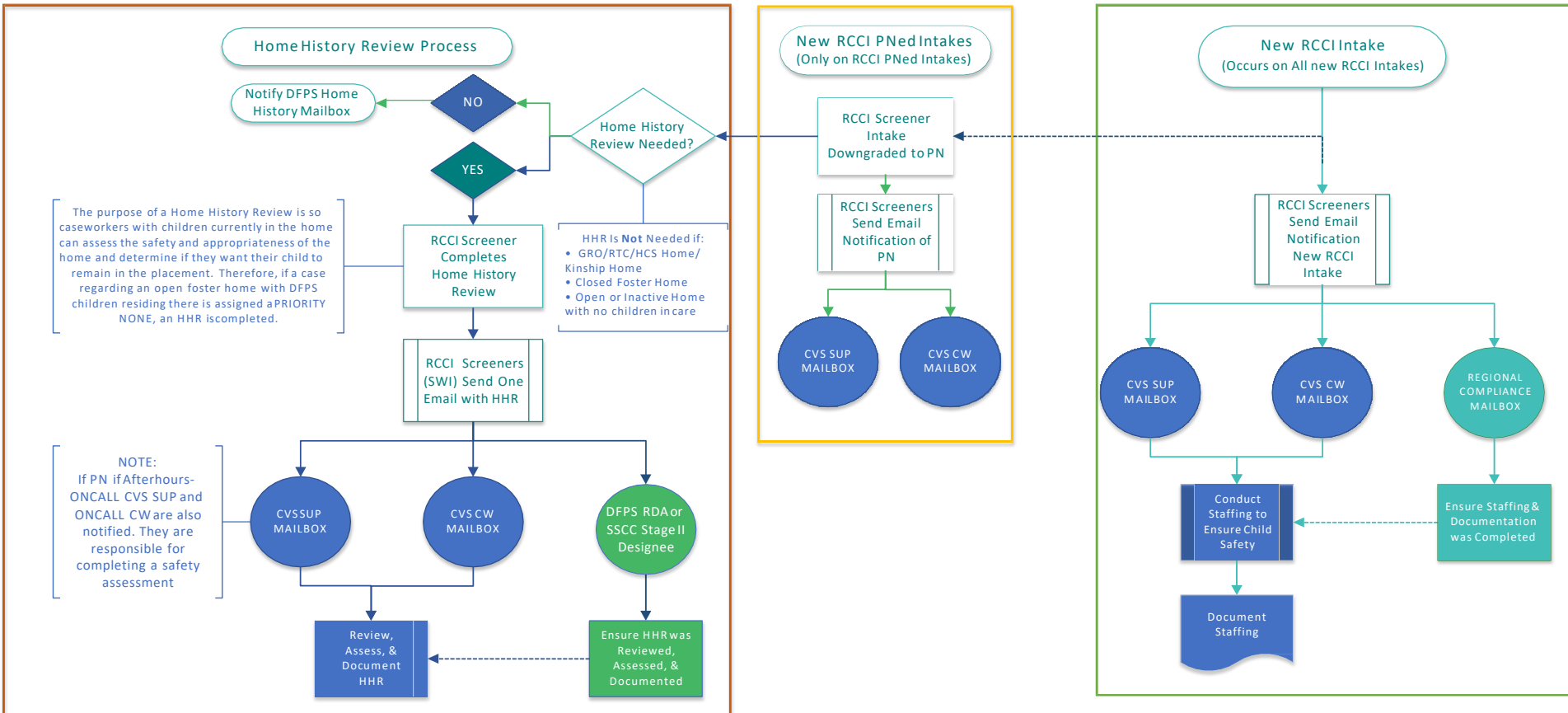
[Accessible Narrative](#)



# STATEWIDE INTAKE



# Statewide Intake (SWI)



Statewide Intake assigns reports or “intakes” for Investigations, which meet the statutory definitions of abuse, neglect and exploitation with an assigned priority based on the alleged severity of harm and level of risk to the child at time of intake. Investigations is in a separate DFPS division.

Priority 1:

There is immediate risk of death, serious injury, or life-threatening abuse or neglect. RCCI must initiate an investigation within 24 hours of receiving a priority 1 intake.

Priority 2:

There is no indication of immediate risk of death or substantial harm. RCCI must initiate an investigation within 72 hours of receiving a priority 2 intake.

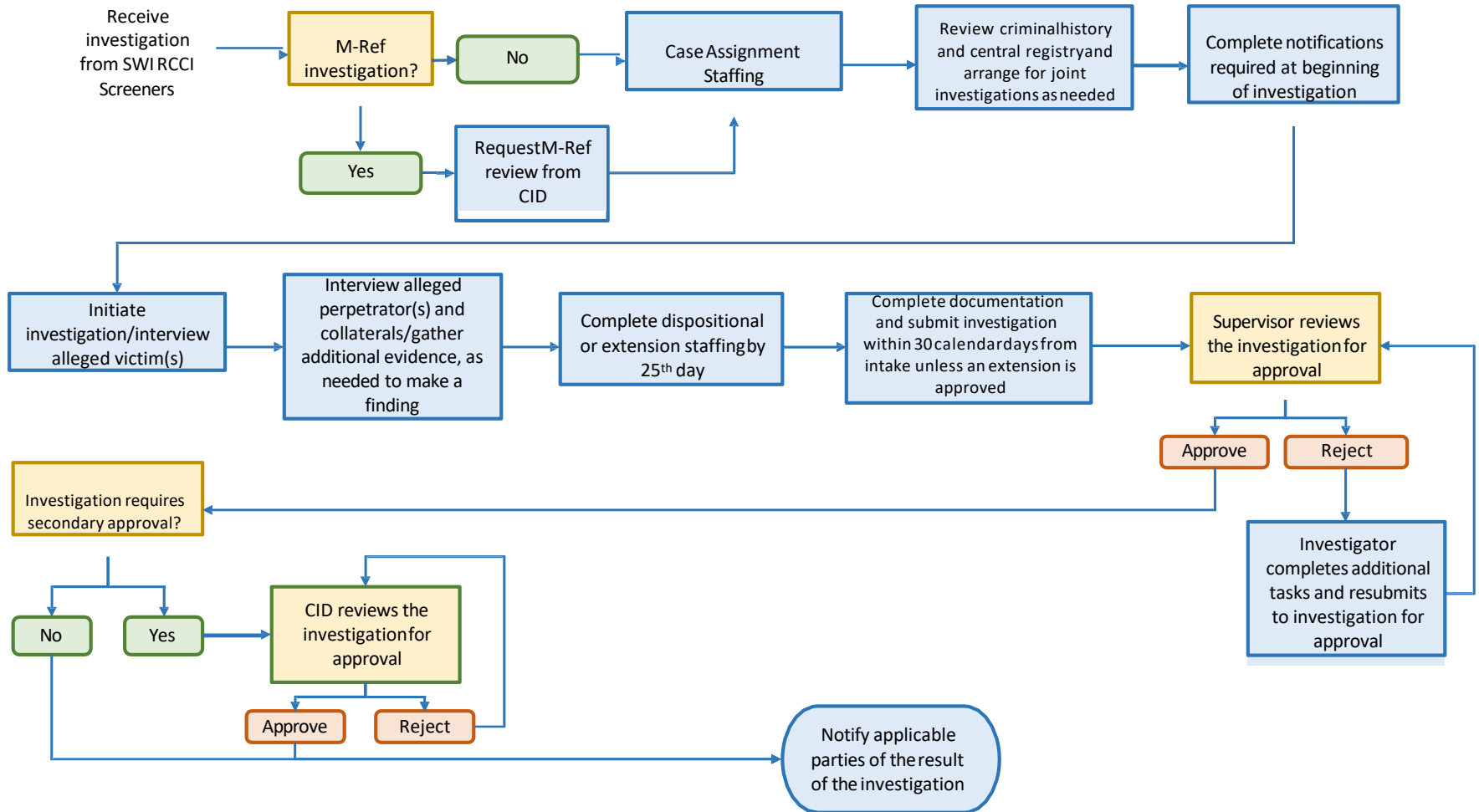


# INVESTIGATIONS





# CPI: Residential Child Care Investigations



- 
- **Residential Child Care Investigators** investigate reports of abuse, neglect and exploitation, assess safety and risk, and determine if further services are needed at licensed residential facilities
  - **Special Investigators** have a background in law enforcement and work with investigators to complete critical investigation tasks in high-risk cases (child death, serious bodily injury, sexual abuse).
  - **Local Law Enforcement** investigate jointly with investigations when there is an immediate risk of physical or sexual abuse of a child that could result in the death of or serious harm.
  - **Children's Advocacy Centers (CAC)** provide forensic interviews of children as well as counseling of child victims. Some also can provide for medical examinations of children on physical or sexual abuse cases.
  - **Multi-disciplinary Teams** allow for law enforcement, investigations, medical and mental health personnel and prosecutors to discuss cases to assist in the transfer of information, provide appropriate services, and identify where follow-up is necessary.
-

---

## Risk Assessment

The risk assessment identifies the likelihood of future abuse/neglect/exploitation occurring in a facility by designating facilities with a very high, high, moderate or low probability of abuse/neglect/exploitation occurring to children in the future.

- By completing the risk assessment, HHSC / DFPS obtains an objective assessment of the likelihood that a facility will maltreat their child in the next 12 to 18 months.
- High-risk facilities have significantly higher rates of subsequent referral and validation than low-risk facilities, and they are more often involved in serious abuse or neglect incidents.



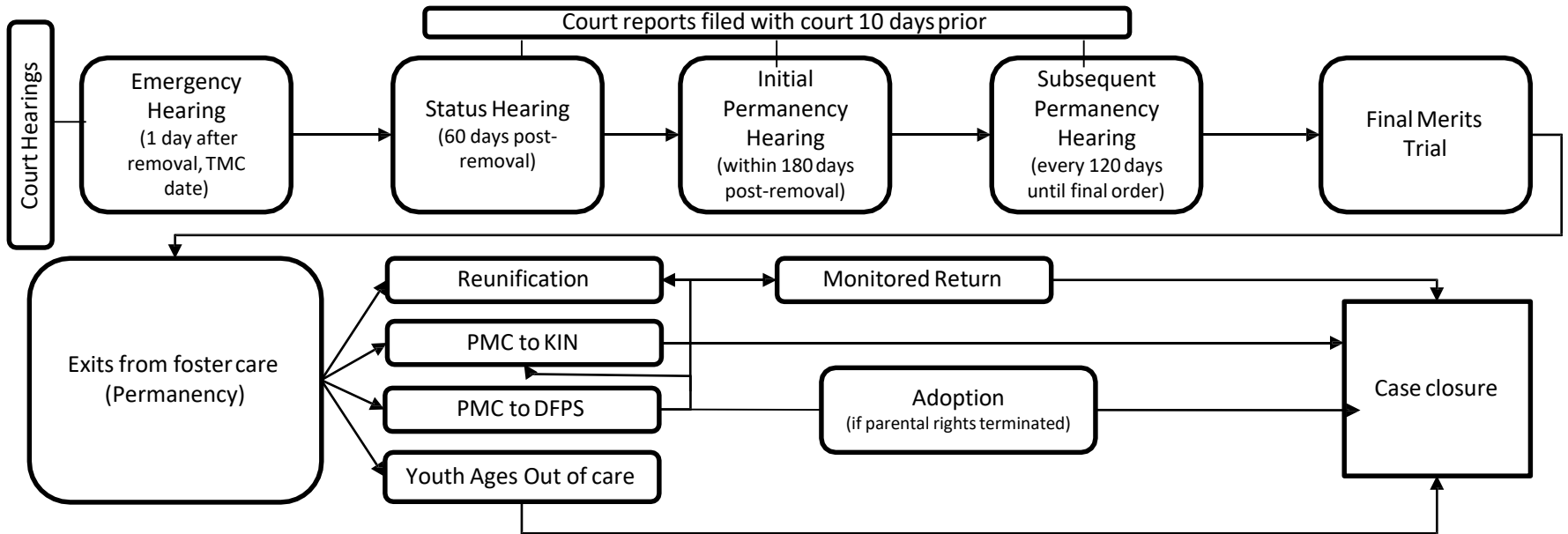
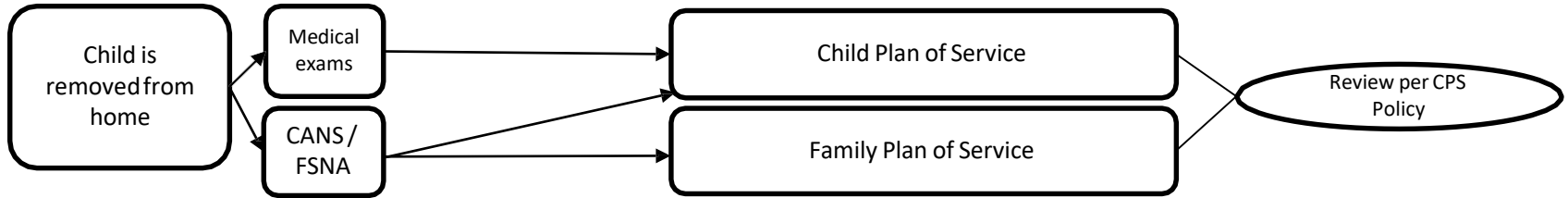
**TEXAS**  
Department of Family  
and Protective Services

---

# CHILD PROTECTIVE SERVICES



# Child Protective Services - Conservatorship



Caseworker Required Monthly Tasks: Face-to-Face contact with each child, parent and caregiver(s), updates from service providers, document contacts, complete and submit Monthly Evaluation in IMPACT, conference with Supervisor



Each placement type provides services (treatment, case management, therapy, etc.) based on their contract

Relative or  
Fictive Kin  
caregiver

DFPS FAD  
foster home  
(excluding all SSCC  
catchment areas and  
DFPS Region 6  
(Houston))

Private Child  
Placing Agency  
Foster home

General Residential Operations

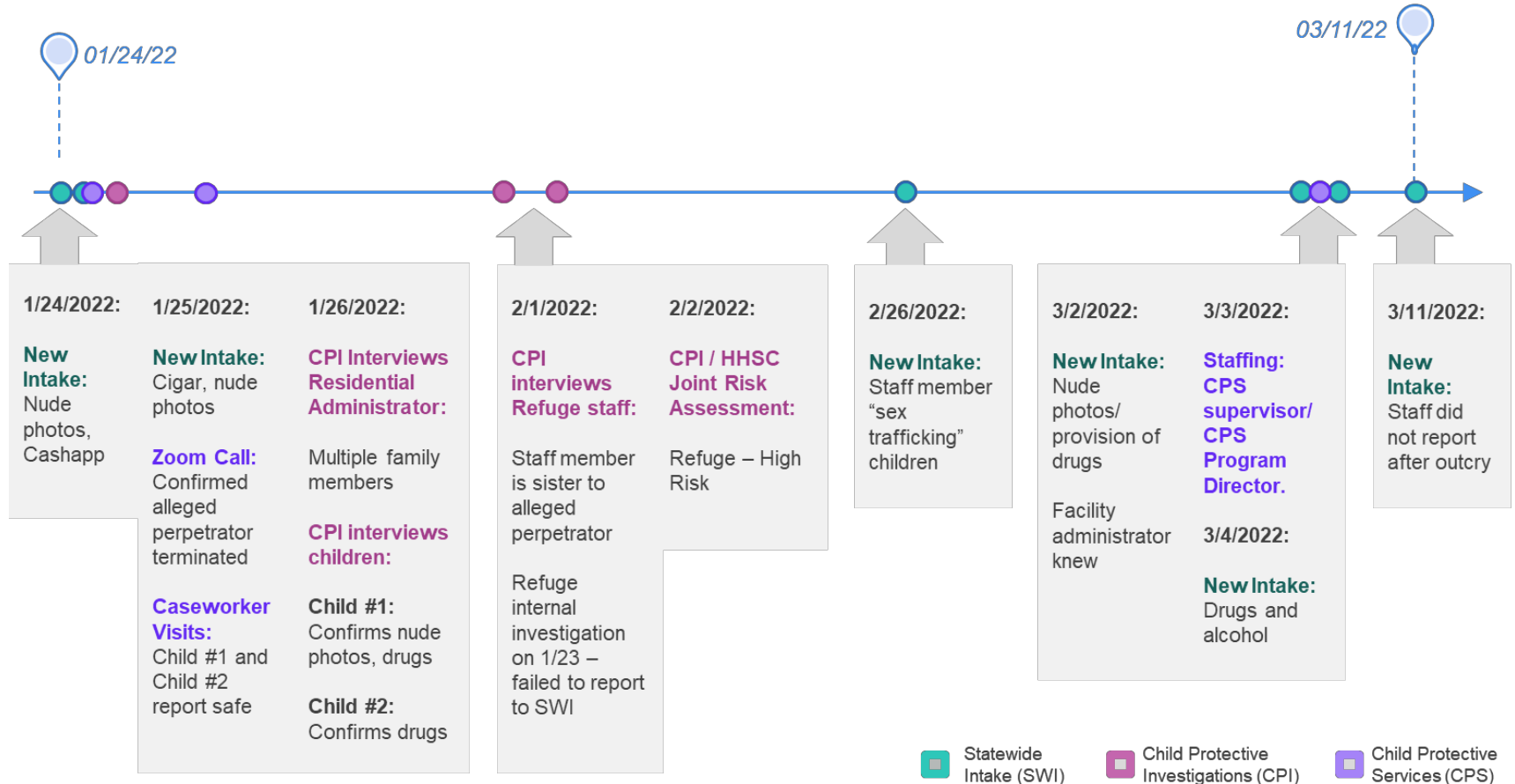
Multiple Services:  
Transitional Living Services  
Emergency Care  
Assessment Services  
Respite Services  
Treatment Services



# TIMELINE



# Staff Allegation/Investigation #1: Child #1 and Child #2



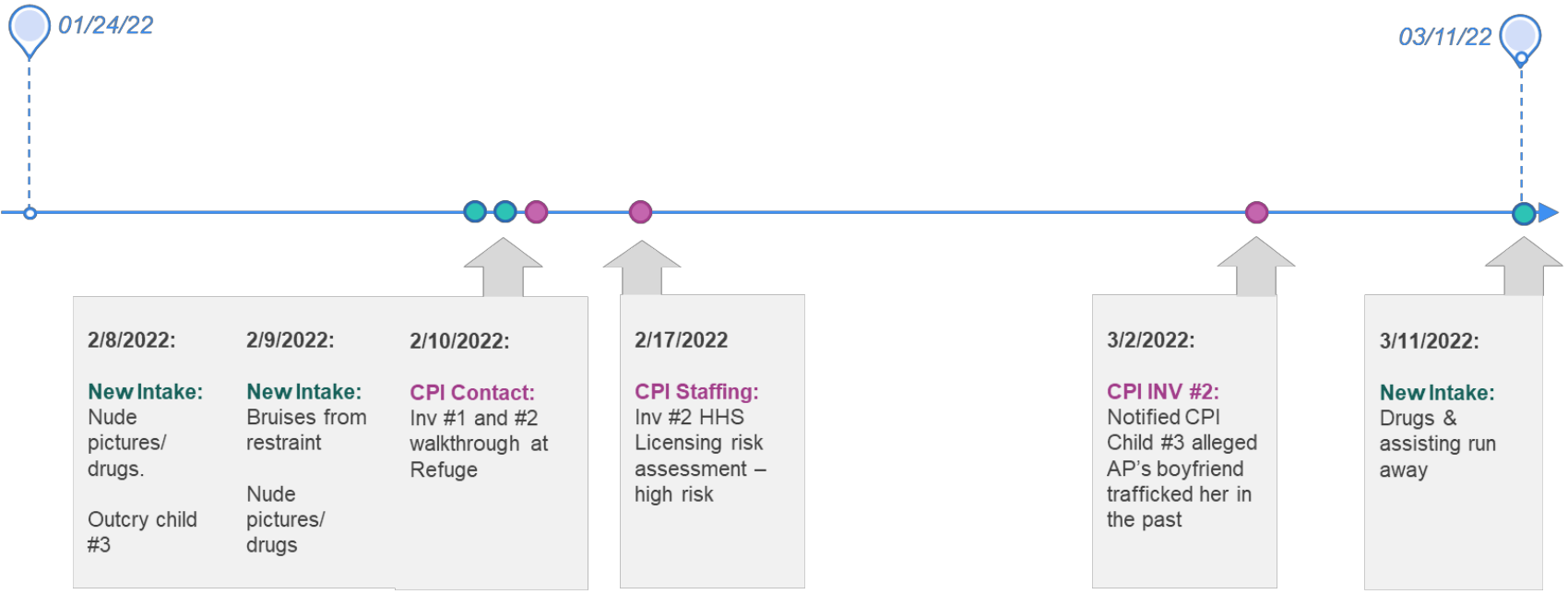
■ Statewide Intake (SWI)
 ■ Child Protective Investigations (CPI)
 ■ Child Protective Services (CPS)

\*TIMELINE DRAFT: FOR DISCUSSION PURPOSES ONLY





# Staff Allegation/Investigation #2: Child #3 and Child #6

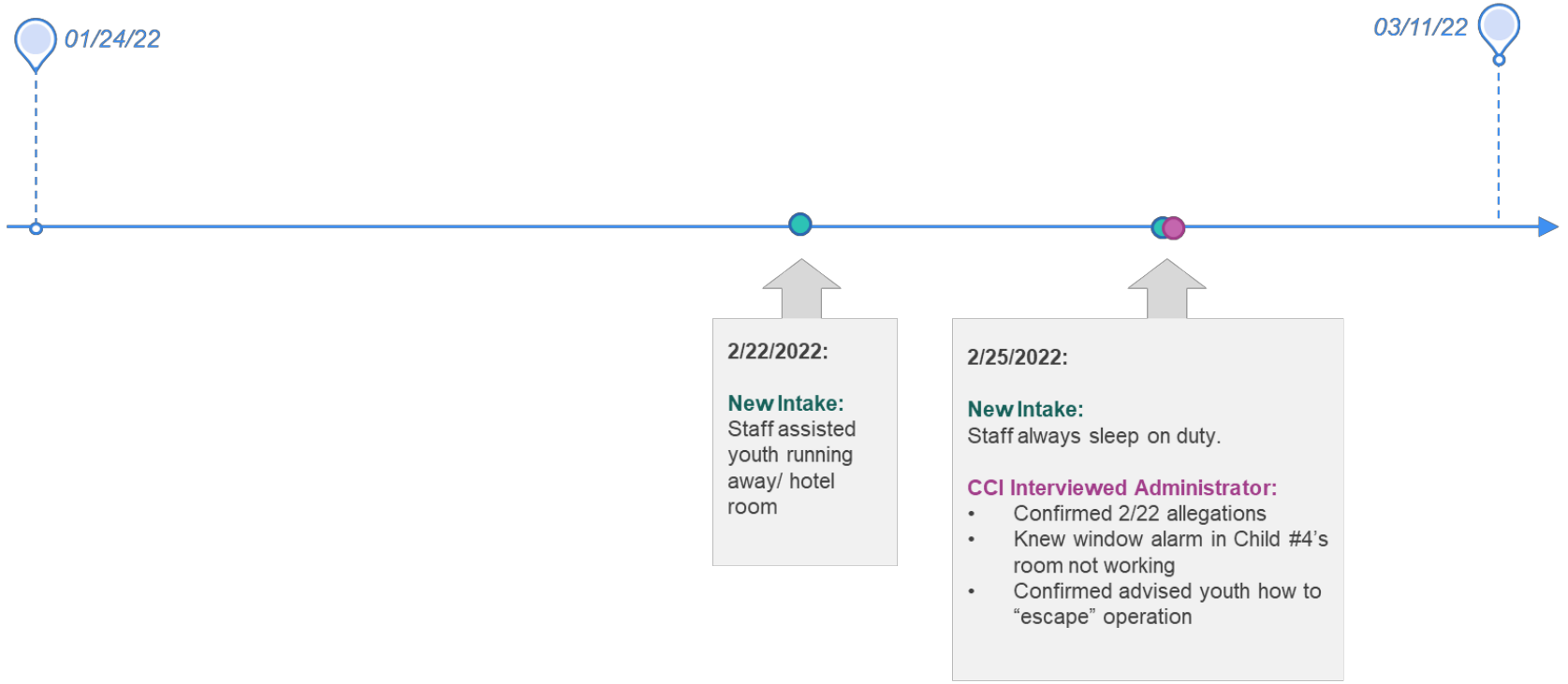


■ Statewide Intake (SWI)
 ■ Child Protective Investigations (CPI)

\*TIMELINE DRAFT: FOR DISCUSSION PURPOSES ONLY

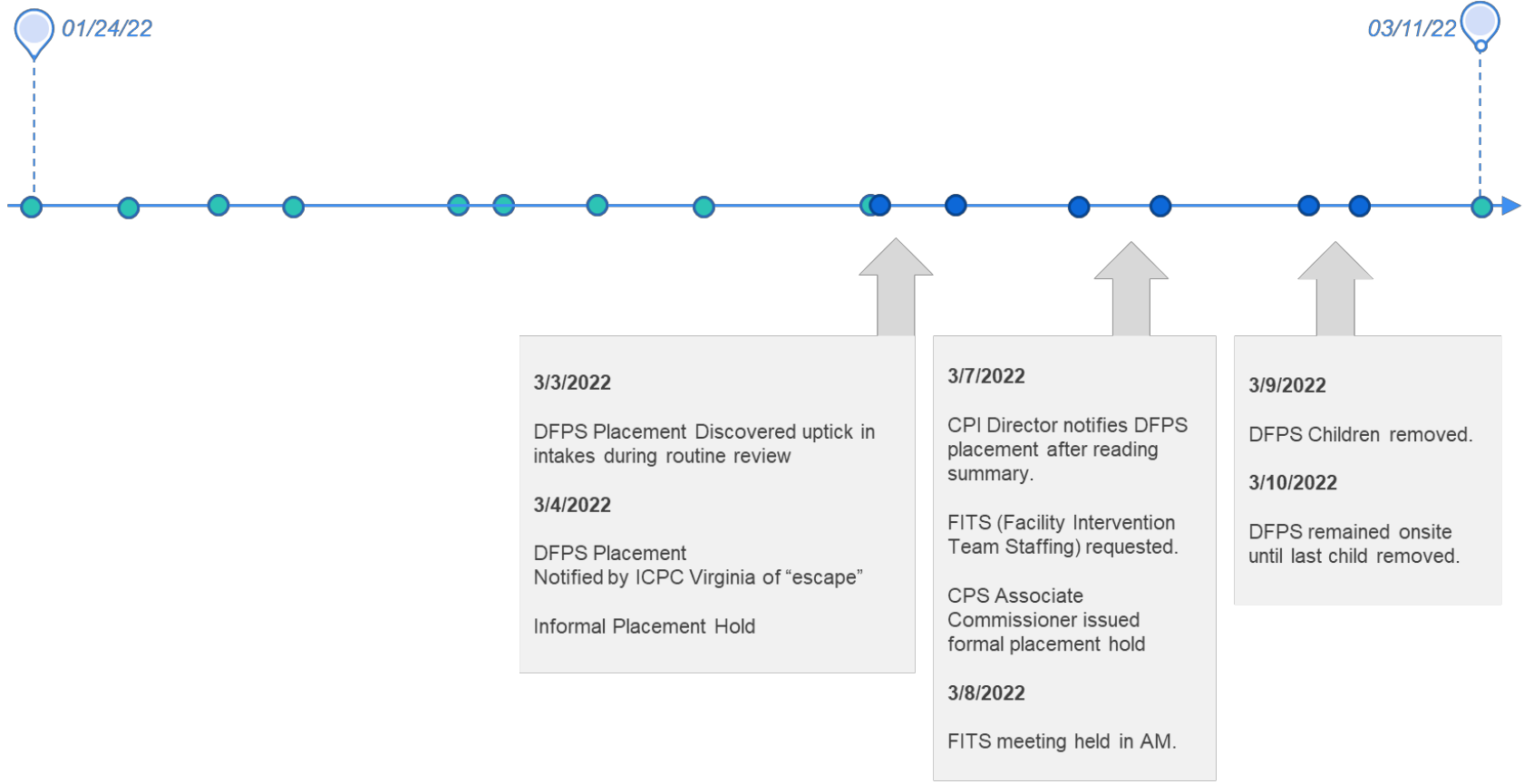


# Staff Allegation/Investigation #3: Child #4 and Child #5



■ Statewide Intake (SWI)    
 ■ Child Protective Investigations (CPI)

\*TIMELINE DRAFT: FOR DISCUSSION PURPOSES ONLY



Statewide Intake (SWI)



DFPS State Office Leadership

\*TIMELINE DRAFT: FOR DISCUSSION PURPOSES ONLY



- SWI / CPI / CPS Associate Commissioners reinforcing guidelines for elevation of issues. Associate Commissioners held all-staff meetings.
- Policy will now reflect that RCCI and CPS are required to do joint staffings to address issues on all cases.
- Commissioner has directed Human Resources to conduct a management review of CPS and CPI.

[Chapter 40 of the Texas Human Resources Code](#): General duties and functions of the Department of Family and Protective Services

[Subchapter B of Chapter 162 of the Texas Family Code](#): Interstate compact of the placement of children

[Chapter 261 of the Texas Family Code](#): Investigation of reports of child abuse, neglect, and exploitation.

[Chapter 262 of the Texas Family Code](#): Procedures in suit by governmental entity to protect health and safety of the child

[Chapter 264 of the Texas Family Code](#): Child welfare services, including community-based-care.

---