



TEXAS
Department of Family
and Protective Services

Prevention and Early Intervention Provider Directory

Fiscal Year 2023



Contents

- Introduction3
- PEI at a Glance4
 - Notable Activities4
- Innovations.....6
 - Family Resource Centers (FRCs).....6
 - Kinship Navigator Program7
 - Early Court Liaison7
 - Bexar County Early Intervention Court.....7
 - Family Self Sufficiency8
- PEI Programs and Provider Information.....9
 - CYD: Community Youth Development.....10
 - CYD Overview.....10
 - Fatherhood EFFECT: Educating Fathers for Empowering Children Tomorrow12
 - Fatherhood EFFECT: Overview12
 - FAYS: Family and Youth Success14
 - FAYS Overview.....14
 - HOPES: Healthy Outcomes through Prevention and Early Support17
 - HOPES Overview.....17
 - Service Members, Veterans and Families (SMVF)20
 - SMVF Overview20
 - SYSN: Statewide Youth Services Network.....22
 - SYSN Overview.....22
 - THV: Texas Home Visiting24
 - THV Overview24
 - TNFP: Texas Nurse-Family Partnership26
- PEI Program by DFPS Region and Associated Counties28
 - Region 1 - Panhandle.....29
 - Region 2 – Big Country/Texoma.....31
 - Region 3 – Metroplex East/West33
 - Region 4 – Piney Woods.....37
 - Region 5 – Deep East.....39
 - Region 6 – Harris/Bay Area/Montgomery.....40

Region 7 – Central Texas/Waco/Capital Area45
Region 8 – South Central/Hill Country 50
Region 9 – Permian/Concho 54
Region 10 – El Paso..... 56
Region 11 – South Texas/Corpus Christi/RGV 58

Introduction

Senate Bill 1574 established PEI in 1999 to consolidate child abuse and neglect prevention, juvenile delinquency prevention, and early intervention programs within the jurisdiction of a single state agency. It has grown to include the Office of Child Safety and Texas Home Visiting.

PEI uses a public health framework to provide early intervention or prevent risk factors that lead to child maltreatment and fatalities, and support positive child, family, and community outcomes. A public health framework uses data and stakeholder feedback to assess the effectiveness of programs and adjusts program delivery accordingly.

PEI aims to improve the well-being of all Texans by acting upon a broad range of factors and conditions that influence child well-being. Preventing child maltreatment and other negative outcomes includes addressing the underlying issues, including poverty, family instability, poor health, substance abuse, and mental illness.

PEI organizes its communication efforts toward three major goals: promoting public awareness, engaging with communities to fund prevention services and coalitions, and positioning PEI as a resource hub.

By providing access to health, wellness, and family-strengthening programs, PEI will achieve a wide array of positive outcomes that benefit not only those served, but local communities and Texas as a whole.

PEI at a Glance

Notable Activities

Since 2022, PEI has:

- **Served 57,608 unique families and youth.** Data shows that more than 97% of children remained safe during services; 99% of youth served are not involved with the juvenile justice system; and approximately 93% of families showed an increase in at least one protective factor after completing services.
- **Published a new webpage dedicated to its 2022-2026 strategic plan.** The interactive page outlines Texas' five-year vision for prevention, using seven objectives to support the creation of safe, stable, and nurturing environments for Texas children, youth, families, and communities.
- **Updated the Community Maltreatment Risk Maps.** Through a contract with The University of Texas Health Science Center-Tyler the community maltreatment risk maps were updated to further help PEI meet its statutory requirement for increasing the number of families receiving prevention and early intervention services. PEI collaborated with various community partners to update the risk factors captured within the mapping tool. PEI continues to utilize the updated risk maps to inform and develop all relevant requests for applications.
- **Launched the Texas Prevention Parent Advisory Council (PAC)** to invest in innovative, consistent ways to engage youth and families and to receive feedback from youth, parents, and caregivers. The Prevention PAC focuses solely on upstream prevention policies, procedures and programming and assist the division in identifying best practices to engage and support Texas children and families. PEI continues to promote outreach campaigns through its flagship public-facing social media campaign (GetParentingTips.com), utilizing wide-scaled prevention messaging to address both child and adolescent safety. These campaigns included PEI's participation in Safe Sleep Week in March, Child Abuse Prevention Month (April), Water Safety Month (May) and Mental Health Awareness Month (May). PEI also offers comprehensive public messaging toolkits for grantees and all members of the Prevention and Early Intervention Community, kicking off this initiative including a Bullying Prevention Month Toolkit (October) followed by Healthy Relationships (February), Child Abuse Prevention Month (April), Mental Health Awareness and Water Safety Month (May), Breastfeeding Awareness and Promotion (August) and more. These toolkits are available for download on the DFPS Prevention and Early Intervention Grantee Information Hub webpage.
- **Funded seven new Family Resource Centers (FRCs)** through existing prevention providers. These FRCs serve as hubs to connect Texas families to supports, services, and opportunities that reflect the needs of each community. Expanded grantees' access to subject matter experts, technical assistance, training sessions, event workshops, and opportunities for peer to peer learning through the vendor pool of experts. PEI now offers monthly Grantee Webinars with topics specific to PEI grantees and continues to support providers through training opportunities. Additionally, PEI piloted the Partners in Prevention (PIP) Learning series to provide training opportunities for the wider prevention partners community. Additionally, PEI has launched a Partners in Prevention (PIP) learning series.
- **Support DFPS's work around the Family First Prevention Services Act.** Collaborated across DFPS divisions and with national, state, and local partners to enhance DFPS's use of family-centered, preventative, data-driven, and evidence-based services and supports.

FY2023 PEI Budget Information		Amount
Annual Appropriation		\$112,438,021
Total Direct Service Program Grants		131
Total Support Contracts		42

Program	Counties Covered	Grants	Subawardees	Evidence-based Models Used
CYD: Community Youth Development	16	17	42	Mentoring, Youth Advisory Committee, Youth Leadership Development, Family and Caregiver Engagement component, Life Skills, Recreational Activities, Academic Support, Youth Based Curriculum
Fatherhood EFFECT	9	7	1	24/7 Dads, Parents As Teachers
HOPES: Healthy Outcomes through Prevention and Early Support	28 Primary Counties	28	29	Abriendo Puertas, Circle of Security, Incredible Years, Family Connects, HIPPY, Nurturing Parenting, Moving Beyond Depression, Nurturing Fathers, Parent Café, Parents As Teachers, SafeCare, STEP, TBRI, Teaching Family, Triple P, 24/7 Dad
SMVF: Texas Service Members Veterans and Families	12	5		Boys & Girls Club Experience, Systematic Training for Effective Parenting (STEP), STRONG STAR, Parents as Teachers, Stewards of Children, Nurturing Parenting, SafeCare, SMART program, Triple P
FAYS: Family and Youth Success	254	28	7	Counseling (trauma-informed, several modalities), Parent education (evidence-based and research supported), Youth Development/Education (evidence-based and research supported)
SYSN: Statewide Youth Services Network	Discretion of the Network	2	59	Boys and Girls Club SMART programs, Big Brothers Big Sisters mentoring
THV: Texas Home Visiting	30	23		Family Connects, Healthy Families America, Home Instruction for Parents of Preschool Youngsters (HIPPY), Parents As Teachers (PAT), Nurse-Family Partnership (NFP)
TNFP: Texas Nurse-Family Partnership Program	53	16	2	Nurse-Family Partnership (NFP)

Innovations

Family Resource Centers (FRCs)

Embedded within existing PEI Grantees, Family Resource Centers (FRCs) began operating in September 1, 2021. FRCs serve as a welcoming hub of support, services, and opportunities for families that reflects community needs, culture, and interests.

All PEI FRCs are required to include resource navigation in their service delivery model. Other service activities include parent education, child development education and/or screening, parent leadership opportunities, skill-based workshops, basic needs assistance, and more. FRCs allow for families to engage in services at varying levels of intensity, depending on the service type. Each FRC is unique and responsive to their community's needs:

Provider	County Served	Service Area Highlights
BCFS Health and Human Services	Cameron	Local headquarters offering group therapeutic workshops; caregiver support groups; parent advisory committees; group connection events; skill-based workshops.
DePelchin Children's Center	Harris	Community center offering parenting education and money management courses; caregiver support groups, drop-in services; child development resources.
El Paso Center for Children	El Paso	Community center in a public housing location offering parenting education; basic needs assistance; life skills classes; family health and wellness activities; caregiver support groups; drop-in services.
Easter Seals Rio Grande Valley	Hidalgo	Community center offering counseling; diaper/basic needs pantry; legal assistance; group connection events; development screenings; drop-in play.
SAFE Alliance	Travis (78752 and 78753)	School-based program offering parenting groups; life skills classes; parent-child STEAM classes; leadership development.
MHMR of Tarrant County	Parker	Trust-Based Relational Therapy (TBRI), Nurturing Parenting, story times, health eating workshops, and parent-child groups.
BCFS Health and Human Service	Bexar (78203, 78220, 78202, 78207)	Targeted high needs areas by ZIP Code; family voice initiatives, implementation and redesign of intake procedures based on the National Family Services Network Model.

The HOPES program funds four FRCs through existing prevention providers. These FRCs serve as hub to connect Texas families to supports, services, and opportunities that reflect the needs of the community in which they are situated. This initiative supports the development of strong communities for the families that live there and ultimately helps keep children safely at home with their families. Compared to FRCs that primarily offer case management, HOPES FRCs offer other service activities which include parent education, child development education and/or screening, parent leadership opportunities, skill-based workshops, and/or basic needs assistance; depending on specified community needs.

Kinship Navigator Program

Congress appropriated funds under Title IV-B, subpart 2 of the Social Security Act to support the development, implementation, enhancement, or evaluation of evidence-based kinship navigator programs. Kinship navigator programs are designed to support the many informal kinship placements that occur outside the child welfare system.

Beginning in Fiscal Year (FY) 2021, PEI grantees developed implementation plans for their perspective kinship navigator programs. Program implementation efforts are underway for the current fiscal year. Grantees will take part in an implementation evaluation conducted by The Center for Violence Prevention of the University of Texas Medical Branch to inform further future implementation.

Grantee Service Counties Include:

- ACH Child and Family Services – Hill, Johnson, Palo Pinto, Parker, and Tarrant
- Catholic Charities – Lubbock, Crosby, Hale, Hockley, and Lynn
- DePelchin Children’s Center – Harris, Fort Bend, and Waller
- New Horizons, Inc. – Brown, Jones, and Taylor (Some virtual services to Callahan, Coleman, McCulloch, Mills, and San Saba)

Early Court Liaison

Early Intervention Court Liaisons in identified Child Protection Courts within Bell, Lubbock, and Galveston counties. Court Liaisons:

- Increase connectivity between Child Protection Courts and local resources.
- Bring a judicial and legal voice to local community collaborations around family support and prevention work.
- Develop prevention service capacity, focusing on FFPSA eligible services, in targeted communities through partnerships with local referral networks to better connect and inform families of services available.
- Increase alignment between community services with Family First Prevention and Services Act requirements so that those programs can draw down federal funds.
- Conduct readiness and local needs assessments to determine feasibility for implementation of specialty courts, like infant/toddler or family drug treatment courts.
- Help courts identify opportunities for parent navigation, kinship navigation, and other peer leadership and support programs.

At present, the Office of Court Administration is hiring for these positions while PEI holds stakeholder meetings convened by the family court judge, within each service community.

Bexar County Early Intervention Court

The Bexar County Early Intervention Court Program started in Fiscal Year 2017 to provide a comprehensive, integrated, and coordinated systems approach to help families within Bexar County. This includes developing, supporting and facilitating individualized services (i.e.: home-based assessments, home visiting programs provide evidence-based parent education, home visiting, and counseling) to meet the needs of some of Bexar county’s most vulnerable families. A speaker’s bureau and learning community have been established to help bring together community partners to address child maltreatment through prevention.

- ❖ Population Served

- Infants, toddlers and parents with some risk, but who would benefit from targeted support or who are at risk of involvement with Child Protective Services (CPS);
- Children, infants, and families who have been identified by Child Protective Services (CPS) as ideal candidates for intensive, family preservation efforts that prevent future involvement in the child welfare system.

❖ Measured Outcomes

- Children remain safe during services, within 1 year, and within 3 years.
- Percent of infants/toddlers and families that will be reunited within 3 months, 6 months, and 12 months.
- Percent of parents who graduate from the Early Intervention Program who will have a job or be enrolled in school.
- Percent of child/parent dyads with improved relationships and attachment indicators.
- Percent of young children enrolled in a safe, quality child care or home setting who have working parents or parents in school.

Family Self Sufficiency

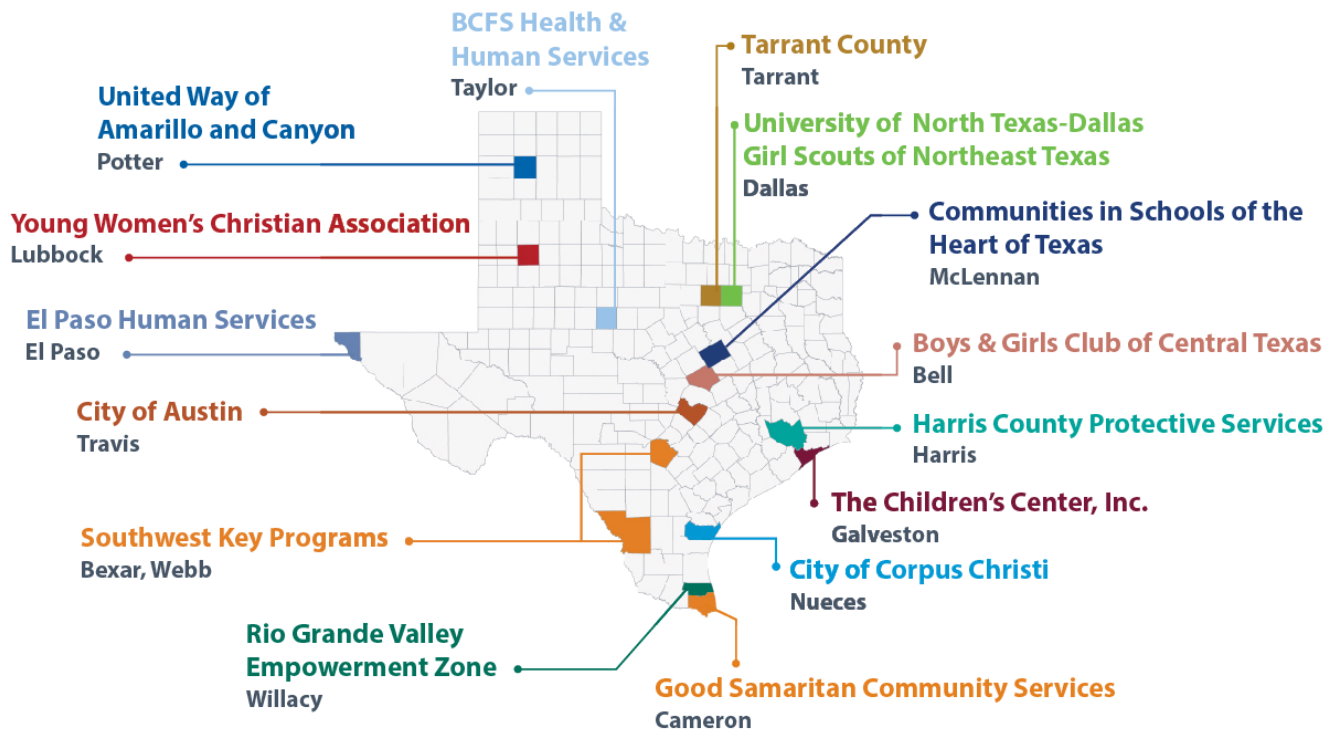
Family Self Sufficiency (FSS) is a program that aligns services to families in conjunction with their local housing authority. Supports typically include parent education as well as other opportunities that build protective factors such as parent support groups, case management, and coordinated assessment and referrals within the community.

Currently PEI has one FSS initiative located in Bryan/College Station at the Brazos Valley Council of Governments.

PEI Programs and Provider Information



CYD: Community Youth Development



CYD Overview

Through the CYD program, PEI provides funding and technical assistance that affords community-based organizations the opportunity to foster positive youth development and build healthy families and resilient communities. CYD provides services in zip codes with high incidences of juvenile crime. Communities prioritize and fund specific prevention services to address their community level needs.

- ❖ **Program Start Date:** 1995
- ❖ **Population Served:** Youth ages 6-17
- ❖ **Counties Served:** Bell, Bexar, Cameron, Dallas, El Paso, Galveston, Harris, Lubbock, McLennan, Nueces, Potter, Tarrant, Taylor, Travis, Webb, Willacy
- ❖ **Measured Outcomes:**
 - Percentage of youth not referred to juvenile probation.
 - Children remain safe during services, within 1 year, and within 3 years.
- ❖ **Program Overview:** PEI provides grants to community-based organizations to provides services in zip codes with high incidence of juvenile crime. Communities prioritize and fund specific prevention services to address their community level needs. Some of the approaches include mentoring, jobs programs, career preparation, and recreational activities.
- ❖ **Success Story:** *Texas Youth Summit* The Texas Youth Summit is an annual event where young leaders from Community Youth Development (CYD) programs all over Texas come together for an engaging, educational, and empowering leadership skill-building experience. The 2022 theme was

“Discovering Your Purpose, Knowing Your Identity” and was held June 27-30 at Huston-Tillotson University in Austin, Texas.

This annual event is an opportunity for over 100 young leaders in the CYD program to convene with their peers across the state. Young leaders learn about well-being and leadership from engaging speakers and workshops, showcase their personal and group community achievements, and are encouraged and empowered to activate the positive change they want to see in their community.

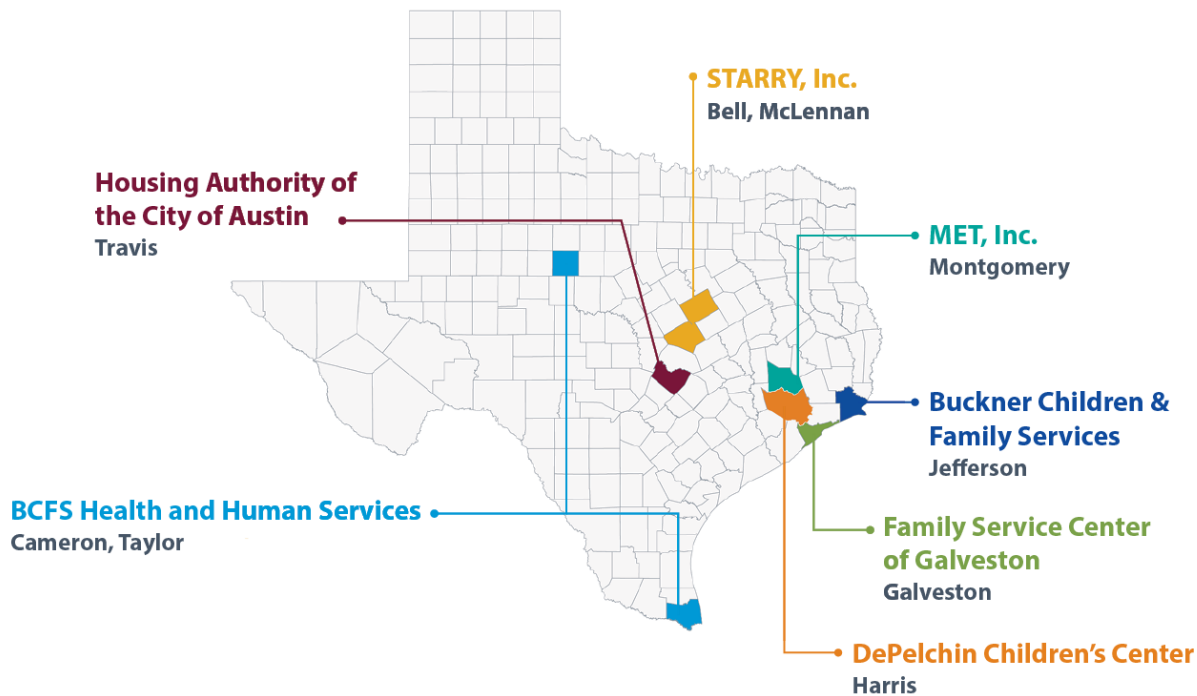
This year young leaders presented their community issue through Town Hall presentations. Community issues addressed by the CYD youth included raising awareness and providing resources for mental health, substance use, peer pressure, pollution, littering, and animal shelters. During the Youth Summit, young leaders have the opportunity to participate in a service-learning project, and this year’s project included cleaning a local park in Pflugerville, Texas.

FY2023 CYD Program Information	Amount
Annual Budget for Grants	\$9,206,766
Total Number of Grants	17 Grantees, 42 Subgrantees
Average Grantee Budget	\$541,574
Target Number of Youth/Families Served Annually FY23	17,135
Counties Served	16

Evidence Based Models Used

- Evidence-Informed
 - Mentoring
 - Youth Leadership Development
 - Curriculum-Based Life Skills
 - Workforce Readiness / College Readiness
- Support Services
 - Academic Support
 - Arts and Cultural Enrichment
 - Basic Needs Support
 - Family Focused Activities
 - Resource and Referral Navigation
 - Sports and Movement

Fatherhood EFFECT: Educating Fathers for Empowering Children Tomorrow



Fatherhood EFFECT: Overview

Fatherhood EFFECT (Educating Fathers for Empowering Children Tomorrow) programs provide parent education and resources to fathers. Beginning in fiscal year 2020, Fatherhood EFFECT's scope expanded to include collaboration with community coalitions, encouraging organizations to increase the quality of supports targeted specifically at fathers and pivoting to explicitly include and support fathers across multiple programs in an organization or community.

- ❖ **Program Start Date:** 2013
- ❖ **Population Served:** Fathers and father-figures to at least one child age 0-17
- ❖ **Counties Served:** Bell, Cameron, Galveston, Harris, Jefferson, McLennan, Montgomery, Taylor, Travis
- ❖ **Measured Outcomes:**
 - Children remain safe during services, within 1 year, and within 3 years
 - Increase in protective factors such as: family functioning and resiliency, social supports and nurturing/attachment
- ❖ **Program Overview:** Services offered include parent education (group/individual) and local systems building efforts to support fathers.
- ❖ **Success Story:** *DePelchin Children's Center, Harris County.*
Jason joined his local 24/7 Dad program in September of 2021. The virtual format allowed Jason, a truck driver who worked long hours, the opportunity to participate in groups from highway rest stops.

It was clear to the facilitators that Jason was going through a hard time. During his first few sessions, he struggled to open up.

As Jason attended more sessions, he began to progressively share more about his life and thoughts on fatherhood. Slowly, Jason revealed to the group more about his parents and what it was like growing up with a physically abusive father. Both the facilitators and other group members validated Jason's experience and offered their support.

During one of his final sessions, Jason shared with the group that due to his job, his relationships with his wife and children had been neglected. During group session, Jason committed to making the necessary adjustments at work to prioritize being there for his loved ones. Program facilitators stated that through his participation in the group, Jason made notable progress in expressing his feelings and eventually became a leading voice in his group.

FY2023 Fatherhood Program Information	Amount
Annual Budget for Grants	\$1,827,948
Total Number of Grants	7 grantees, 1 Subgrantee
Average Grantee Budget	\$261,135
Target Number of Youth/Families Served Annually FY23	1,004
Counties Served	9

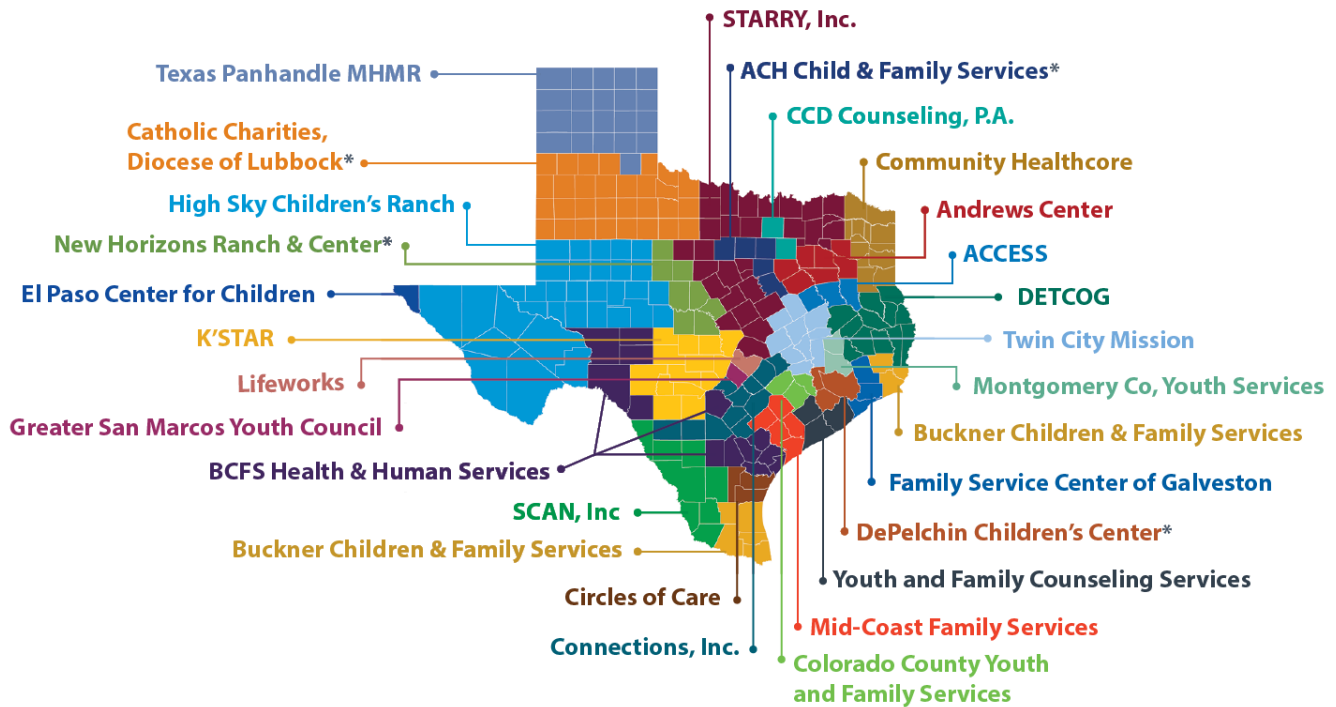
Evidence Based Models Used

- Promising
 - 24/7 Dad
 - Parenting Wisely
- Evidence-Based
 - Parents as Teachers (PAT)
 - Triple P – Positive Parenting Program
- Support Services
 - Basic Needs Support
 - Counseling
 - Resource and Referral Navigation

FAYS: Family and Youth Success

* denotes Texas Kinship Navigator Program grantees.

* Texas Kinship Navigator Program Grantees



FAYS Overview

The FAYS program addresses family conflict and everyday struggles while promoting strong families and youth resilience. Every FAYS provider offers one-on-one coaching or counseling with a trained professional and group-based learning for youth and parents. FAYS programs also operate a 24-hour hotline for families having urgent needs.

- ❖ **Program Start Date:** 2014 (in current form); 1983 (since inception)
- ❖ **Population Served:** Families with youth under 18 years old who are dealing with family conflict or everyday struggles. In some areas of the state FAYS only provides services to families with children 6-17 years of age.
- ❖ **Counties Served:** All Counties in Texas.
- ❖ **Measured Outcomes:**
 - Children remain safe during services, within 1 year, and within 3 years.
 - Percentage of youth not referred to juvenile probation.
 - Increase in protective factors such as: family functioning and resiliency, social supports, and nurturing/attachment.
- ❖ **Program Overview:** Every FAYS provider offers one-on-one coaching or counseling with a trained professional as well as family coaching or counseling. FAYS providers also offer group-based learning for youth and parents and each provider operates a 24-hour hotline for families having urgent needs.

- ❖ ***Texas Kinship Navigator Program:** In May 2019, PEI released a funding opportunity specifically for FAYS grantees to successfully expand services to kinship caregivers throughout the state, in compliance with the requirements and guidelines of the [Family First Prevention Services Act](#). PEI funded four grantees serving rural and urban areas; grantees with strong connections to foster care and Community-Based Care; grantees with a variety of organizational structures; and variety of experiences working with kinship families.

- ❖ **Success Story: ACCESS (Cherokee County).** The Rogers family entered the FAYS program due to a recent increase in family conflict. The family, consisting of the grandfather, step grandmother, two teenage granddaughters and a 12- year-old grandson, have been together since Child Protective Services removed the children from their mother and placed them with their grandparents. The family conflict escalated after the grandfather died and the grandmother’s mental and physical health subsequently began to decline. To address the issues within the family, the grandmother participated in and completed Parenting Wisely, a parenting program offered through FAYS.

Through the skills learned through this program, the grandmother was able to support the oldest granddaughter when she found out she was pregnant - something she does not think she would have been able to do prior to being in the program. Program facilitators noted during a recent family visit that the family’s communication skills and empathy for one another had improved significantly after completing the program.

FY2023 FAYS Program Information	Amount
Annual Budget for Grants	\$24,310,306
Total Number of Grants	28 Grantees, 7 Subgrantees
Average Grantee Budget	\$868,222
Target Number of Youth/Families Served Annually FY23	22,328
Counties Served	All Counties

Evidence Based Models Used

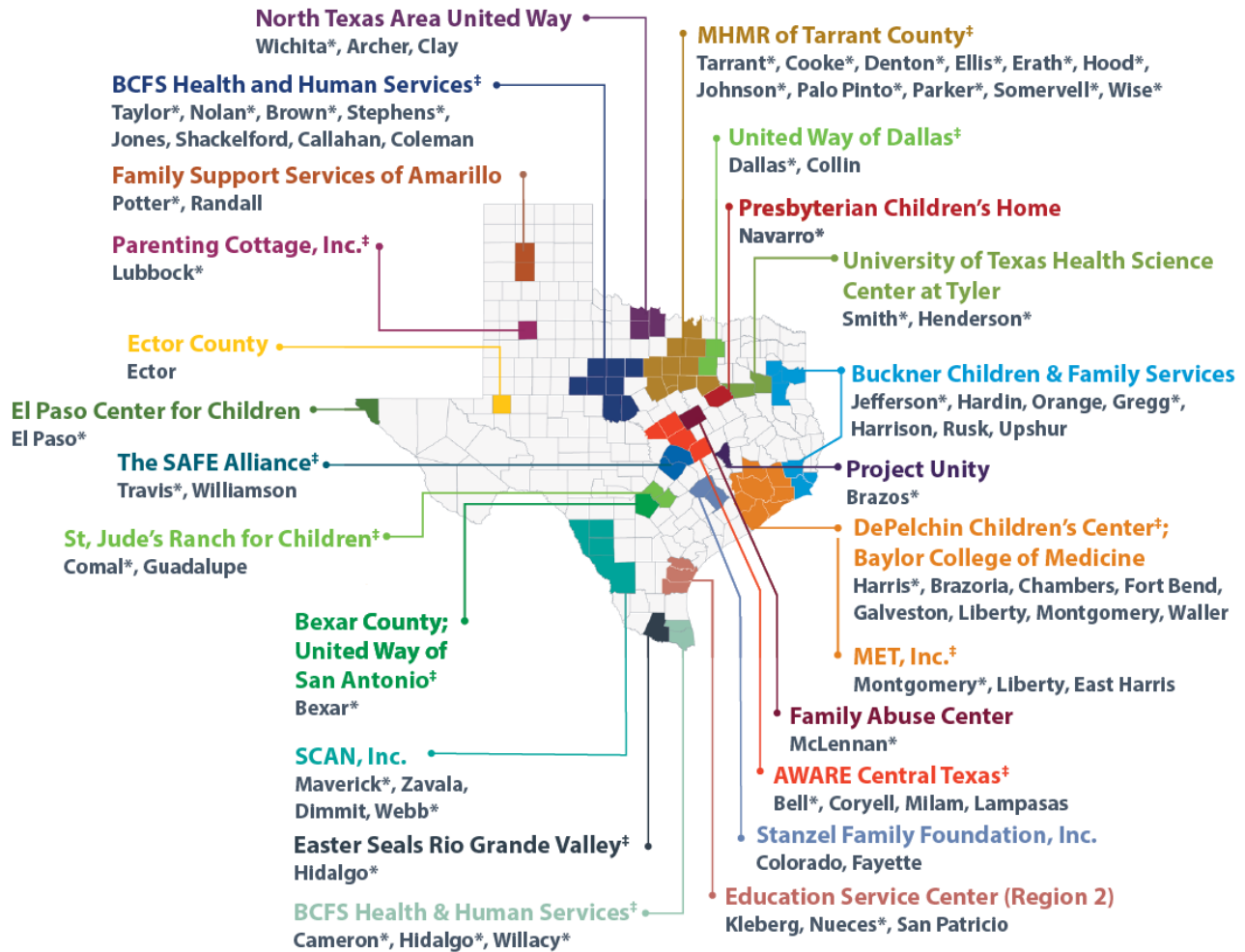
- Promising
 - 1-2-3 Magic
 - Active Parenting*
 - Aggression Replacement Training
 - Bounce Back
 - Defiant Children
 - Love and Logic
 - Make Parenting A Pleasure
 - Nurturing Parenting*
 - Parenting Wisely
 - Positive Action
 - Systematic Training for Effective Parenting (STEP)*
 - Trust-Based Relational Intervention (TBRI)
 - Why Try
- Evidence-Informed
 - Kinship Navigator
- Evidence-Based
 - Big Brothers, Big Sisters*
 - CAT Project
 - Common Sense Parenting
 - Coping Cat
 - Incredible Years

- Motivational Interviewing
- Seeking Safety
- Strengthening Families
- Support Services
 - Basic Needs Support
 - Counseling
 - Family Focused Activities
 - Family Resource Centers
 - Resource and Referral Navigation
 - Therapy modalities

HOPES: Healthy Outcomes through Prevention and Early Support

*Denotes provider counties

‡ Denotes sites which received HIP funding in FY23



HOPES Overview

Project HOPES is a flexible community grant that funds a wide variety of innovative initiatives and supports for families with children 0-5 years of age. Supports typically include home visiting services, as well as other supports that build protective factors, such as parent support groups, maternal depression screening, early literacy promotion, case management, and parent education. HOPES grants also include local collaborations with health care, faith-based organizations, child welfare, early childhood education, and other child and family services in the community.

In FY23, DFPS reallocated former Helping through Intervention and Prevention funding to HOPES programs to strengthen programming and increase statewide access to supports for pregnant and parenting youth in care.

- ❖ **Program Start Date:** 2014
- ❖ **Population Served:** Families with children ages 0-5 years old who are considered at risk for abuse and neglect.

- ❖ **Counties Served:** Archer, Bell, Bexar, Brazoria, Brazos, Brown, Cameron, Chambers, Clay, Coleman, Collin, Colorado, Comal, Cooke, Coryell, Dallas, Denton, Dimmit, El Paso, Ellis, Erath, Fayette, Fayette Travis, Fort Bend, Galveston, Gregg, Guadalupe, Hardin, Harris, Harris Brazoria, Harris Tarrant, Harrison, Henderson, Hood, Jefferson, Johnson, Jones, Kleberg, Lampasas, Liberty, Lubbock, Maverick, McLennan, Milam, Montgomery, Navarro, Nolan, Nueces, Orange, Palo Pinto, Parker, Potter, Randall, Rusk, San Patricio, Shackelford, Smith, Somervell, Stephens Callahan, Taylor, Upshur, Waller, Waller Hidalgo, Webb, Wichita, Williamson, Wise, Zavala
- ❖ **Measured Outcomes:**
 - Children remain safe during services, within 1 year, and within 3 years.
 - Increase in protective factors such as: family functioning and resiliency, social supports, and nurturing/attachment.
- ❖ **Program Overview:** Program supports typically include home-visiting services as well as other supports that build protective factors such as parent support groups, maternal depression screening, early literacy promotion, case management, and other parent education.
- ❖ **Success Story:** *SAFE Alliance (Travis County).* Martin chose SAFE Alliance’s parent support programming to assist him in his new role as a stepfather of two. Martin was in the foster care system as a child due to suspected abuse in his home. At the beginning of the parenting program, Martin justified the physical punishment he received as a child since he was “just a bad kid”. The parent educator was able to help Martin unpack his childhood and realize there is no such thing as a “bad kid.” Martin was also able to identify alternatives that could have been used instead of the physical punishment he received as a child. After discussing physical punishment during various Nurturing Parenting lessons, Martin has learned alternatives to physical punishment and how to connect with his young children and actively support their well-being and happiness.

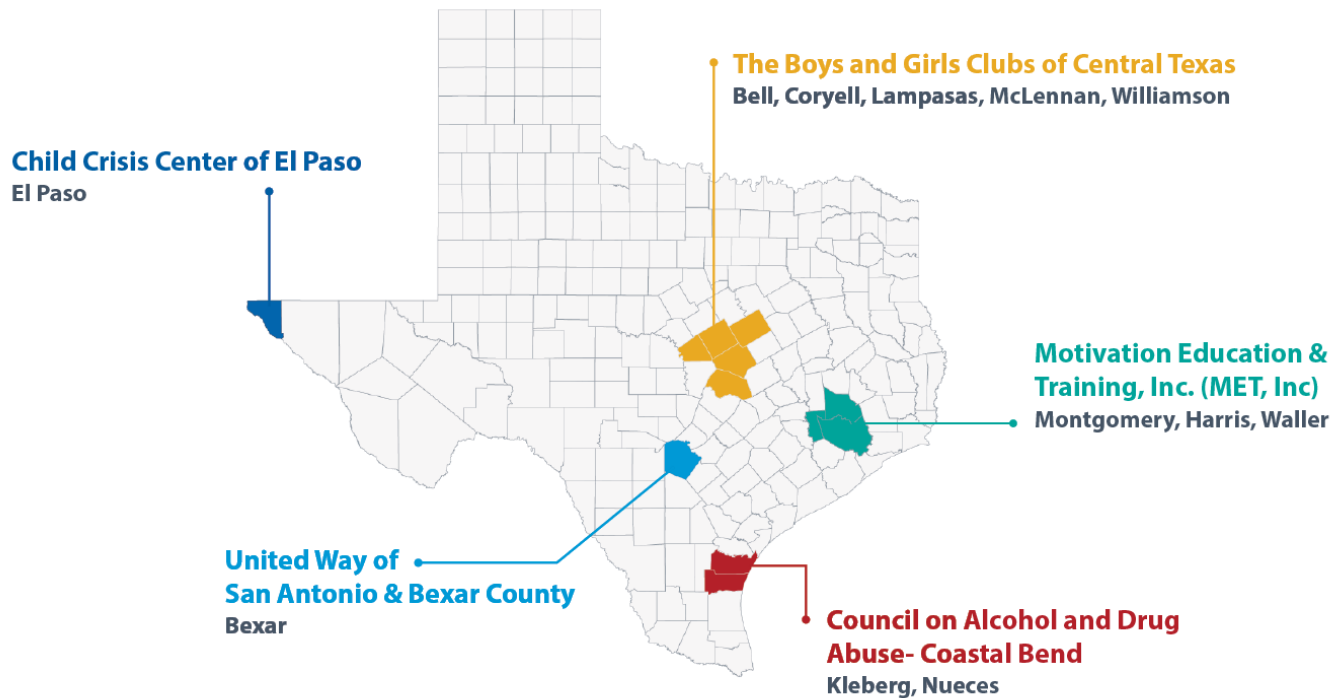
FY2023 HOPES Program Information	Amount
Annual Budget for Grants	\$24,758,964
Total Number of Grants	28 Grantees, 29 Subgrantees
Average Grantee Budget	\$853,757
Target Number of Youth/Families Served Annually FY23	9,534
Counties Served	28 Primary Counties

Evidence Based Models Used

- Promising
 - 24/7 Dad
 - Circle of Security
 - Nurturing Parenting*
 - Systematic Training for Effective Parenting (STEP)
 - Teaching Family Model (TFM)
 - Trust-Based Relational Intervention (TBRI)
- Evidence-Based
 - Abriendo Puetras
 - AVANCE
 - Family Connects
 - Home Instruction for Parents of Preschool Youngsters (HIPPIY)
 - Incredible Years
 - Parents as Teachers (PAT)
 - SafeCare

- Triple P– Positive Parenting Program
- Support Services
 - Basic Needs Support
 - Counseling
 - Family Focused Activities
 - Mothers and Babies
 - Resource and Referral Navigation
 - Therapy modalities
 - uplift
 - upWORDS

Service Members, Veterans and Families (SMVF)



SMVF Overview

The SMVF program provides support for families of children ages 0-17 in which one or both caregivers are serving, or have served, in the armed forces, reserves, or National Guard.

- ❖ **Program Start Date:** 2014
- ❖ **Population Served:** Military families with children ages 0-17 in which one or both parents are serving, or have served, in the armed forces, reserves, or National Guard.
- ❖ **Counties Served:** Bell, Bexar, Coryell, El Paso, Harris, Kleberg, Lampasas, McLennan, Montgomery, Nueces, Waller, Williamson
- ❖ **Measured Outcomes:**
 - Children remain safe during services, within 1 year, and within 3 years.
 - Increase in protective factors such as: family functioning and resiliency, social supports, and nurturing/attachment.
- ❖ **Program Overview:** Through supports such as parenting, education, counseling, and youth development programming, this program is designed to:
 - Build on the strengths of both caregivers and children to promote strong families; Partners with military and veteran caregivers to support positive parental involvement in their children's lives;
 - Partner with military and veteran caregivers to maximize their ability to give their children emotional, physical and financial support; and
 - Build community coalitions focused on promoting positive outcomes for children, youth and families.

- ❖ **Success Story: *Child Crisis Center – (El Paso County.)*** In September of 2021, Grace joined her local SMFV program after hearing information about it through an outreach coordinator at an event in her community. At the time, Grace was pregnant, parenting two children, and feeling overwhelmed about her husband’s upcoming deployment. She mentioned wanting to participate in program classes to sharpen her parenting strategies. As an active duty spouse, Grace was far away from her family and friends. Through her eager participation in group classes, she was able to become part of the community of parent participants and was even able to set up a play date for her children with other group members.

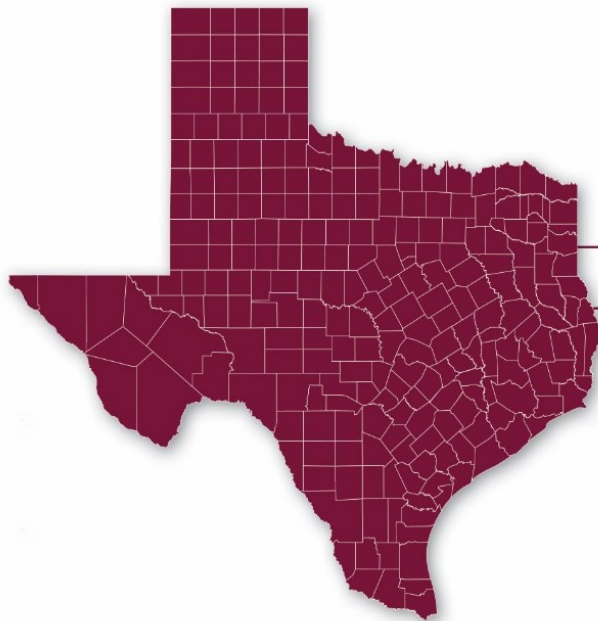
When it was time to have her baby, Grace was able to access childcare through the program so that her husband was able to attend the birth of their baby. After the baby’s birth, Grace continued to attend classes until she completed the STEP curriculum, and she is planning to enroll in wraparound services through the program. Grace stated that through the SMFV program she was able to learn parenting strategies and develop a system of support to help her not feel so alone.

FY2023 SMVF Program Information	Amount
Annual Budget for Grants	\$1,599,976
Total Number of Grants	5
Average Grantee Budget	\$319,995
Target Number of Youth/Families Served Annually FY23	1,461
Counties Served	12
Annual Budget for Grants	1,825,00

Evidence Based Models Used

- Promising
 - InsideOut Dad
 - Nurturing Parenting
 - Systematic Training for Effective Parenting (STEP)
- Evidence-Informed
 - Wraparound Services
- Evidence-Based
 - Big Brothers, Big Sisters
 - SafeCare
 - Strong Families, Strong Forces
 - Triple P– Positive Parenting Program
- Support Services
 - Basic Needs Support
 - Resource and Referral Navigation

SYSN: Statewide Youth Services Network



These state-level grantees maintain a statewide network of youth programs aimed at promoting positive youth development.

• **Big Brothers Big Sisters of North Texas**

• **Texas Alliance of Boys & Girls Clubs**

SYSN Overview

The SYSN program creates a statewide network of youth programs aimed at positive youth development for youth ages 6 to 17. PEI funds allow state-level grantees to identify areas that may benefit from additional resources and target support to local communities to maintain the statewide network.

- ❖ **Program Start Date:** 2008
- ❖ **Population Served:** Children and youth ages 6-17, with a focus on youth between the ages of 10-17, in each DFPS region of the state.
- ❖ **Counties Served:** Counties are served at the discretion of the SYSN network.
- ❖ **Measured Outcomes:**
 - Children remain safe during services, within 1 year, and within 3 years.
 - Percentage of youth not referred to juvenile probation.
- ❖ **Program Overview:** Services offered through SYSN providers include community and school-based mentoring, youth leadership development, and youth skills. Providers deliver evidence-based programs that proactively increase protective factors in youth including involvement with positive peer groups, involvement with school and community and presence of caring adults other than parents in the youth's life.
- ❖ **Success Story:** *Big Brothers Big Sisters (El Paso County)*. Lucas' mother referred him to Big Brothers Big Sisters after seeing him struggle to cope after his father left and started a new family. His mom witnessed her son begin to lack confidence and feel ashamed as his relationship with his father deteriorated. Lucas began to avoid interacting with other adults and youth, including no longer attending school.

However, when Lucas was assigned a Big Brother, the change in him was evident. Lucas' Big

Brother intentionally would take Lucas to places where he could practice his conversation skills with others. Lucas was able to talk to his Big Brother about things he didn't feel comfortable expressing with his mother, including his relationship with his dad and going back to school. Lucas' relationship with his Big Brother even encouraged him to begin a sport through the YMCA so that he could have more interaction with his peers. Lucas' mother loves seeing her son grow and change through his involvement with Big Brothers Big Sisters.

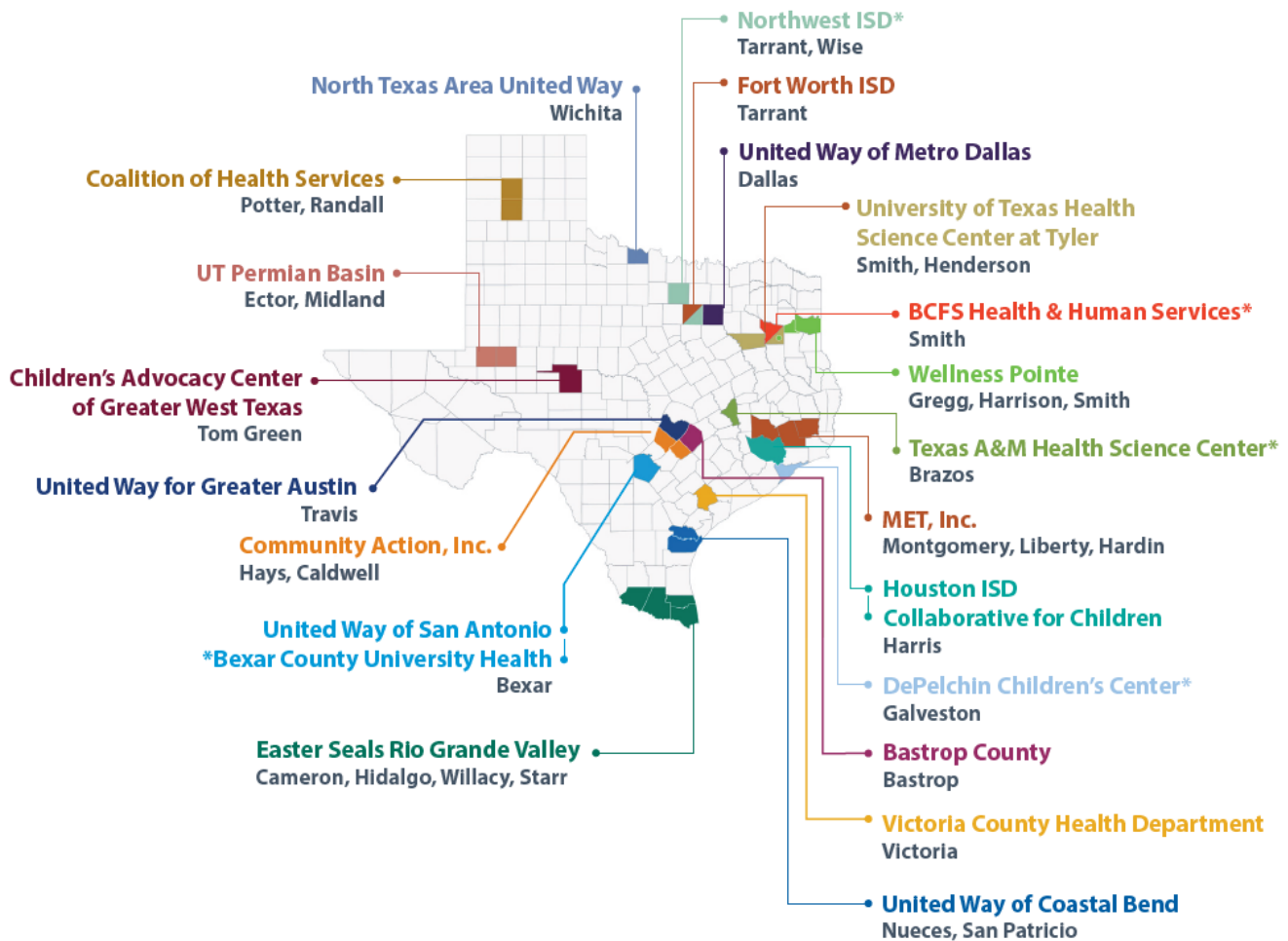
FY2023 SYSN Program Information	Amount
Annual Budget for Grants	\$1,587,500
Total Number of Grants	2 grantees, 59 subgrantees
Average Grantee Budget	\$793,750
Target Number of Youth/Families Served Annually FY23	2,863
Counties Served	Discretion of the SYSN Network

Evidence Based Models Used

- Promising
 - Boys and Girls Club
- Support Services
 - Basic Needs Support
 - Resource and Referral Navigation

THV: Texas Home Visiting

* Denotes new grantees for FY23



THV Overview

THV is a free, voluntary program through which early childhood and health professionals regularly visit the homes of pregnant women and families with children under 6 years of age. Using evidence-based models, the program supports positive child health and development outcomes, increases family self-sufficiency, and creates communities where children and families can thrive. THV also supports the coordination of local and state early childhood coalitions to build comprehensive early childhood systems. The unique Texas model utilizes both service and systems-level strategies to improve broad child and family outcomes.

- ❖ **Program Start Date:** 2012
- ❖ **Population Served:** Expecting parent(s), caregiver(s), or primary caregiver(s) of a child up to age 5. Roles vary, but center around people who have an ongoing relationship with, and provide physical care, for the child. Families are eligible if the parent or primary caregiver is expecting or parenting a young child, from birth until the child's sixth birthday or kindergarten entry, whichever occurs first.
- ❖ Families must reside in the specified service delivery area county or unified service area and exhibit PEI priority characteristics to be eligible.

- ❖ **Counties Served:** Bastrop, Bexar, Brazos, Cameron, Dallas, Ector, Galveston, Gregg, Harris, Harrison, Hardin, Hays, Henderson, Hidalgo, Liberty, Midland, Montgomery, Nueces, Potter, Randall, San Patricio, Smith, Starr, Tarrant, Tom Green, Travis, Victoria, Wichita, Wise, Willacy
- ❖ **Measured Outcomes:**
 - Children remain safe during services, within 1 year, and within 3 years.
 - Increase in parent/child interaction, ability to cope with parental stress.
 - Support positive health outcomes by addressing premature birth outcomes, attending well child visits, and support breastfeeding.
- ❖ **Program Overview:** Services offered through THV include evidence-based home visiting, parent education, and local systems building. THV includes a broader set of funding that allows communities to select the model best suited for their community.
- ❖ **Success Story:** *Texas Home Visiting, UTPB (Ector & Midland Counties)* Cara, a mother currently enrolled with the Home Instruction for Parents of Preschool Youngsters (HIPPO) program, was suffering from severe depression. Because of this, her home visitor provided Cara with extra activities that promoted self-care and would check in on her multiple times per week, in addition to the normal curricula.

Cara’s text to her home visitor sums up the support provided by THV, “I don’t think I’ve told you enough how much I appreciate you. I’m so happy that I signed up for this program and that it put you in our path. My kids have benefitted so much from this program, and me too!! I’ve gotten closer with them, and it’s helped me evolve into a better parent and teacher. You’re a great home visitor. I appreciate you so much! I just wanted to let you know that you’ve made a difference in my life and my kids’ lives.”.

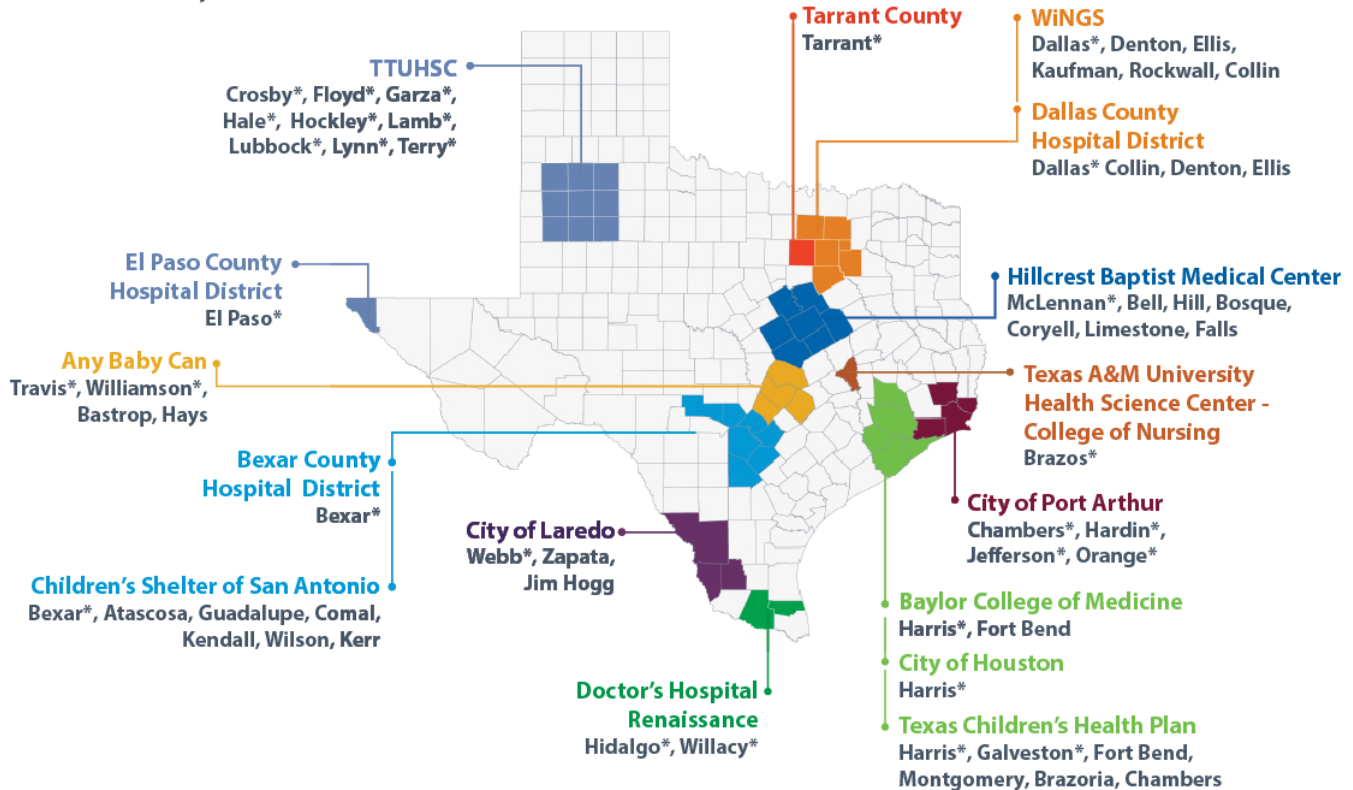
FY2023 THV Program Information	Amount
Annual Budget for Grants	\$21,897,080
Total Number of Grants	21 Grantees
Average Grantee Budget	\$1,026,804
Target Number of Youth/Families Served Annually FY23	6,624
Counties Served	30

Evidence Based Models Used

- Evidence-Based
 - Family Connects
 - Healthy Families America (HFA)
 - Home Instruction for Parents of Preschool Youngsters (HIPPO)
 - Nurse-Family Partnership (NFP)
 - Parents as Teachers (PAT)
 - SafeCare Augmented
- Support Services
 - Basic Needs Support
 - Family Resource Centers
 - Mothers and Babies
 - Resource and Referral Navigation

TNFP: Texas Nurse-Family Partnership

* Denotes Primary Counties



TNFP Overview

TNFP is a free, voluntary program through which nurses partner with first-time mothers to improve prenatal care and provide one-on-one child development education and counseling. Families start the partnership with TNFP by their 28th week of pregnancy and can receive support until the child reaches 2 years of age.

- ❖ **Program Start Date:** 2008
- ❖ **Population Served:** First-time, low income mothers and their families from before their 28th week of pregnancy through their child's second birthday.
- ❖ **Counties Served:** Atascosa, Bastrop, Bell, Bexar, Bosque, Brazoria, Brazos, Chambers, Comal, Coryell, Crosby, Dallas, El Paso, Falls, Floyd, Fort Bend, Galveston, Garza, Guadalupe, Hale, Hardin, Harris, Hays, Hidalgo, Hill, Hockley, Jefferson, Jim Hogg, Kendall, Kerr, Lamb, Limestone, Lubbock, Lynn, McLennan, Montgomery, Orange, Tarrant, Terry, Travis, Webb, Willacy, Williamson, Wilson, Zapata
- ❖ **Measured Outcomes:**
 - Children remain safe during services, within 1 year, and within 3 years.
 - Increase in parent/child interaction, ability to cope with parental stress.
 - Support positive health outcomes by addressing premature birth outcomes, attending well child visits, and support breastfeeding.
- ❖ **Program Overview:** Services offered through TNFP includes evidence-based home visiting by a licensed nurse to address issues related to health, self-sufficiency, parenting, and stress

management.

- ❖ **Success Story:** *Hillcrest Texas Nurse-Family Partnership Program - (McLennan County)* Dani, a 19-year old mother, was very engaged in Hillcrest’s Nurse Family Partnership program, taking steps to secure her and her baby’s safety and future. Her baby is 11 months old now. While in the program and caring for her baby, the young mother worked hard on her goal to become a Certified Medical Assistant as well. Dani underwent significant challenges and persisted with the support of her Nurse Home Visitor and other providers. She also struggled with intimate partner violence and had to take difficult steps to ensure her baby’s safety.

She has recently completed relationship counseling and mental health counseling through a local mental health provider as well. The Nurse Home Visitor who has been working with this young mother since before her baby was born has watched this young mother grow and achieve goals in the face of incredible obstacles.

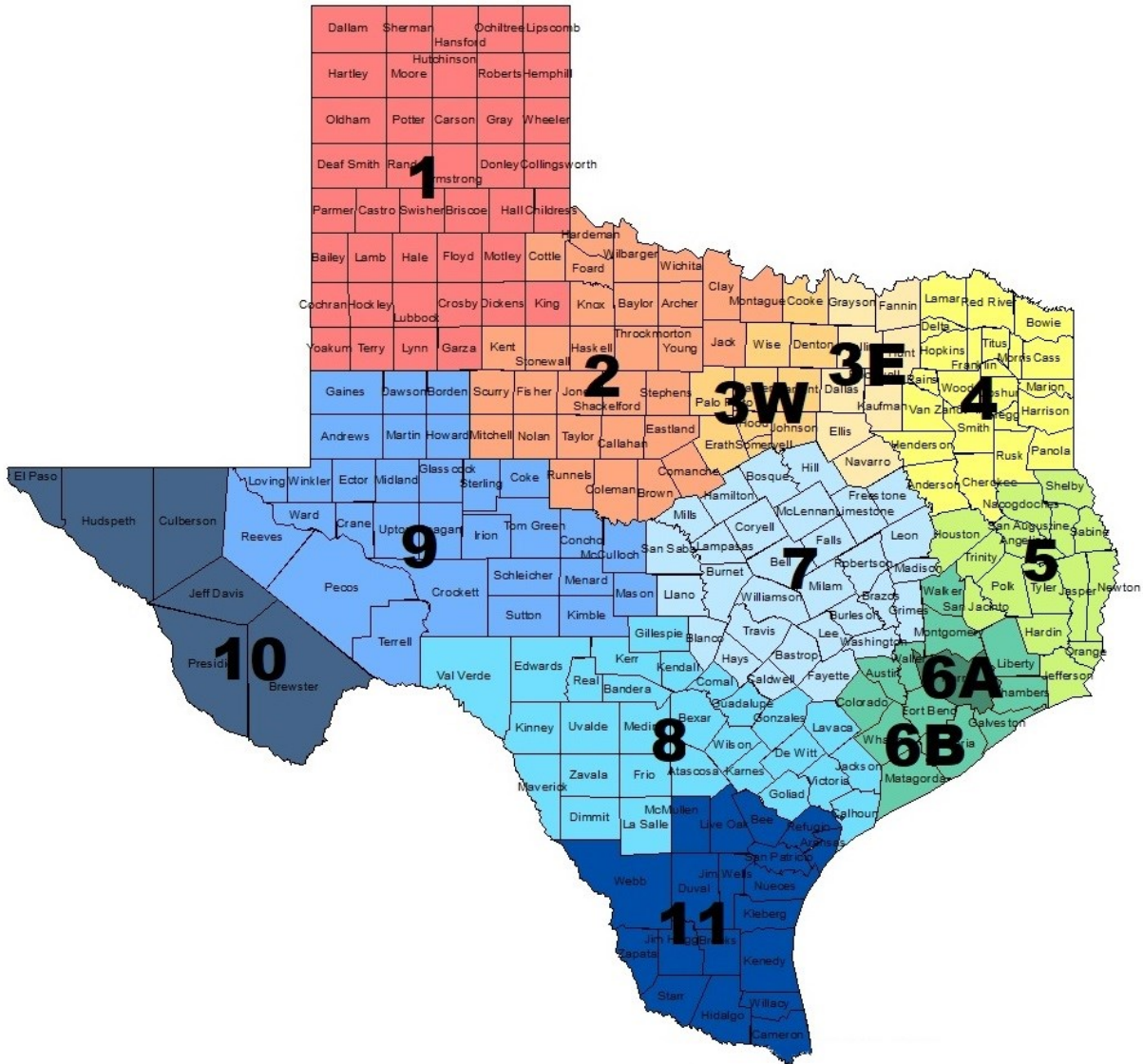
Despite these odds, Dani has completed her testing and is now a Certified Medical Assistant – all while caring for and nurturing her baby during her critical first year.

FY2023 TNFP Program Information	Amount
Annual Budget for Grants	\$16,002,878
Total Number of Grants	16 Grantees, 2 subgrantees
Average Grantee Budget	\$1,000,180
Target Number of Youth/Families Served Annually FY23	3,077
Counties Served	53

Evidence Based Models Used

- Evidence-Based
 - Nurse-Family Partnership (NFP)
- Support Services
 - Basic Needs Support
 - Resource and Referral Navigation

PEI Program by DFPS Region and Associated Counties



Region 1 - Panhandle

Region 1 - Panhandle

Counties: Armstrong, Bailey, Briscoe, Carson, Castro, Childress, Cochran, Collingsworth, Crosby, Dallam, Deaf Smith, Dickens, Donley, Floyd, Garza, Gray, Hale, Hall, Hansford, Hartley, Hemphill, Hockley, Hutchinson, King, Lamb, Lipscomb, Lubbock, Lynn, Moore, Motley, Ochiltree, Oldham, Parmer, Potter, Randall, Roberts, Sherman, Swisher, Terry, Wheeler, Yoakum

Program	Provider	Grantee or Subgrantee	County Served	Contact
CYD	The United Way, Inc. dba United Way of Amarillo & Canyon	Grantee	Potter	www.unitedwayama.org/ 806-376-6359; 806-468-8734 Katherine.quinlin@unitedwayama.org
CYD	Young Women's Christian Association of Lubbock, Texas Inc.	Grantee	Lubbock	www.ywcalubbock.org 806-993-9922 marketing@ywcalubbock.org
FAYS	Texas Panhandle Mental Health/Mental Retardation	Grantee	Armstrong, Carson, Collingsworth, Dallam, Deaf Smith, Donley, Gray, Hall, Hemphill, Hutchinson, Lipscomb, Moore, Ochiltree, Oldham, Potter, Randall, Roberts, Sherman, Hansford, Hartley, Wheeler	www.texaspanhandlecenters.org 806-337-1000; 806-354-2191 contactus@txpan.org
		Subgrantee: Texas Panhandle Centers Behavioral and Developmental Health		www.texaspanhandlecenters.org 806-358-1681
FAYS and KNP	Catholic Charities, Diocese of Lubbock, Inc.	Grantee	Bailey, Briscoe, Castro, Childress, Cochran, Crosby, Dickens, Floyd, Garza, Hale, Hockley, King, Lamb, Lubbock, Lynn, Motley, Parmer, Swisher, Terry, Yoakum	https://cclubbock.org/youth-and-families 806-765-8475 info@cclubbock.org
HOPES	Parenting Cottage, Inc.	Grantee	Lubbock	www.parentingcottage.org 806-795-7552 carla.olson@parentingcottage.org

Region 1 - Panhandle

Program	Provider	Grantee or Subgrantee	County Served	Contact
		Subgrantee: Covenant Health Systems	Lubbock	www.covenanthealth.net 978-312-4300
		Subgrantee: University Medical Center of Lubbock	Lubbock	www.utswmed.org 806-761-0710
HOPES	Family Support Services of Amarillo, Inc.	Grantee	Primary: Potter, Secondary: Randall	www.fss-ama.org 806-342-2500 jcampbell@fss-ama.org
SYSN	Big Brothers Big Sisters Lone Star	Grantee	All Counties	www.bbbstx.org 888-887-2447 info@bbbstx.org
SYSN	Texas Alliance of Boys & Girls Clubs	Grantee	All Counties	www.txbgc.org 512-301-7771 mitzi@txbgc.org
THV (MIECHV)	Coalition of Health Services	Grantee	Primary: Potter, Randall Secondary: Deaf Smith	www.cohs.net 806-337-1700
TNFP	Texas Tech University Health Science Center	Grantee	Lubbock, Crosby, Floyd, Garza, Hale, Hockley, Lamb, Lynn, Terry	ttuhsc.edu/nursing/combest 806-743-3390

Region 2 – Big Country/Texoma

Counties: Archer, Baylor, Brown, Callahan, Clay, Coleman, Comanche, Cottle, Eastland, Fisher, Foard, Hardeman, Haskell, Jack, Jones, Kent, Knox, Mitchell, Montague, Nolan, Runnels, Scurry, Shackelford, Stephens, Stonewall, Taylor, Throckmorton, Wichita, Wilbarger, Young

Program	Provider	Grantee or Subgrantee	County Served	Website / Email Contact
CYD	BCFS Health and Human Services	Grantee	Taylor	www.discoverbcfs.net 325-692-0033 info@bcfs.net
FAYS	Catholic Charities, Diocese of Lubbock, Inc.	Grantee	Baylor, Cottle, Foard, Hardeman, Haskell, Kent, Knox, Stonewall, Throckmorton, Wilbarger	www.cclubbock.org 806-765-8475 info@cclubbock.org
FAYS	STARRY, INC.	Grantee	Archer, Clay, Comanche, Eastland, Jack, Montague, Shackelford, Stephens, Wichita, Young	www.starry.org 512-388-8290 info@starry.org
FAYS	High Sky Children's Ranch, Inc.	Grantee	Fisher, Mitchell, Nolan, Runnels, Scurry	staytogetherprogram.org ; 432-699-1466 staytogether@highsky.org
FAYS (KNP)	Catholic Charities, Diocese of Lubbock, Inc.	Grantee	Baylor, Cottle, Foard, Hardeman, Haskell, Kent, Knox, Stonewall, Throckmorton, Wilbarger	cclubbock.org/youth-and-families 806-765-8475 info@cclubbock.org
FAYS (KNP)	New Horizons Ranch and Center, Inc. (Family First)	Grantee	Brown, Callahan, Coleman, Jones, Taylor	www.nh-families.org 325-437-1852 Contact via website
Fatherhood EFFECT	BCFS Health and Human Services	Grantee	Taylor	www.discoverbcfs.net 956-230-3849 JW1014@bcfs.net
HOPES	BCFS Health and Human Services	Grantee	Primary: Brown, Nolan, Taylor, Stephens Secondary: Callahan, Coleman, Jones, Shackelford	www.discoverbcfs.net/abilene 325-692-0033 JW1014@bcfs.net
HOPES	North Texas Area United Way, Inc.	Grantee	Archer, Clay, Wichita	www.ntauw.org ; 940-322-8638 info@ntauw.org

Region 2 - Big Country/Texoma

Program	Provider	Grantee or Subgrantee	County Served	Website / Email Contact
		Subgrantee: Wichita Falls Independent School District	Wichita	www.wfisd.net 940-235-1000
SYSN	Big Brothers Big Sisters Lone Star	Grantee	All Counties	www.bbbstx.org 888-887-2447 info@bbbstx.org
SYSN	Texas Alliance of Boys & Girls Clubs	Grantee	All Counties	www.txbgc.org 512-301-7771 mitzi@txbgc.org
THV (MIECHV)	North Texas Area United Way, Inc.	Grantee	Archer, Clay, Wichita	www.ntauw.org ; 940-322-8638 info@ntauw.org

Region 3 – Metroplex East/West

Region 3 – Metroplex East/West

Counties: Collin, Cooke, Dallas, Denton, Ellis, Erath, Fannin, Grayson, Hood, Hunt, Johnson, Kaufman, Navarro, Palo Pinto, Parker, Rockwall, Somervell, Tarrant, Wise

Program	Provider	Grantee or Subgrantee	County Served	Contact
CYD	The University of North Texas at Dallas	Grantee	Dallas	www.risingblazers.org 972-338-1345 Rising.Blazers@untdallas.edu
		Subgrantee: Big Brothers Big Sisters - Lone Star	Dallas	bbbstx.org/greater-dallas/ 888-887-2447
		Subgrantee: Boys & Girls Clubs of Greater Dallas	Dallas	bgcdallas.org 241-821-2950
		Subgrantee: Carter's House	Dallas	cartershouse.org 972-815-5004
		Subgrantee: For Oak Cliff	Dallas	foroakcliff.org 214-730-0081
		Marc Cuban Heroes Basketball Center Initiative	Dallas	markcubanheroescenter.org 214-379-7451
		Subgrantee: Puede Network	Dallas	puedenetwork.com 214-901-0940
		Subgrantee: YMCA of Metropolitan Dallas	Dallas	ymcadallas.org 469-569-7620
		Subgrantee: Youth Revive	Dallas	youthrevive.org 214-414-9499 adrianm@youthrevive.org
CYD	Girl Scouts of Northeast Texas	Grantee	Dallas	www.gsnetx.org 972-349-2400 info@gsnex.org
		Subgrantee: Dallas Prestige Group	Dallas	www.dallasprestigegroup.com 972-591-3799

Region 3 – Metroplex East/West

Program	Provider	Grantee or Subgrantee	County Served	Contact
CYD	Tarrant County	Grantee	Tarrant	health.tarrantcounty.com 817-740-4340 PHCYD@tarrantcounty.com
FAYS	CCD Counseling, P.A.	Grantee	Dallas, Denton	www.familytreeprogram.org 888-837-0666 Ext. 2 smeckfessel@familytreeprogram.org
FAYS	STARRY, INC.	Grantee	Collin, Cooke, Erath, Fannin, Grayson, Hood, Hunt, Somervell, Wise	www.starry.org 512-388-8290 info@starry.org
FAYS	Andrews Center	Grantee	Ellis, Kaufman, Navarro	www.andrewscenter.com 903-597-1351; 903-581-2835 cjones@andrewscenter.com
FAYS (KNP)	ACH Child and Family Services	Grantee	Johnson, Palo Pinto, Parker, Tarrant	www.ACHservices.org 817-335-4673; 888-296-8099 info@achservices.org
HOPES	My Health My Resources of Tarrant County	Grantee	Primary: Tarrant, Cooke, Denton, Ellis, Erath, Hood, Johnson, Palo Pinto, Parker, Somervell, and Wise	www.mhmrtc.org ; 817-335-3022 Communication@mhmrtc.org
		Subgrantee	Tarrant	www.transforminglives.org 817-332-6191
HOPES	United Way Metropolitan Dallas, Inc.	Grantee	Primary: Dallas Secondary: Collin	www.unitedwaydallas.org 214-978-0000 info@unitedwaydallas.org
HOPES	Presbyterian Children's Homes & Services	Grantee	Navarro	www.pchas.org 800-888-1904; 512-476-1234 info@pchas.org
SYSN	Big Brothers Big Sisters Lone Star	Grantee	All Counties	www.bbbstx.org 888-887-2447 info@bbbstx.org

Region 3 – Metroplex East/West

Program	Provider	Grantee or Subgrantee	County Served	Contact
SYSN	Texas Alliance of Boys & Girls Clubs	Grantee	All Counties	www.txbgc.org 512-301-7771 mitzi@txbgc.org
THV	Northwest ISD	Grantee	Harris	https://www.nisdtx.org/departments/academics/early-childhood/family-involvement-program 817-215-0000 FamilyInvolvement@nisdtx.org
THV	Fort Worth ISD	Grantee	Tarrant	www.fwisd.org 817-814-2000 web@fwisd.org
THV (MIECHV)	United Way of Metropolitan Dallas	Grantee	Collin; Dallas	unitedwaydallas.org 214-978-0000
		Subgrantee: Lumin Education	Dallas	www.lumineducation.org 214-824-8950
		Subgrantee: AVANCE of Dallas	Dallas	www.avance-ntx.org 214-887-9907
		Subgrantee: Metrocare	Dallas	www.metrocareservices.org 214-743-1200
		Subgrantee: Family Care Connection	Dallas	www.familycareconnection.org 972-298-3366
		Subgrantee: Momentous Institute	Dallas	www.momentousinstitute.org 214-915-4700
TNFP	Dallas County Hospital District	Grantee	Primary: Dallas Secondary: Collin, Denton, Ellis	www.parklandhospital.com/nurse-family-partnership 214-266-1140 ARTISHA.BROWDER@phhs.org
TNFP	Tarrant County	Grantee	Tarrant	health.tarrantcounty.com 817-413-6320 NFP@tarrantcounty.com

Region 3 – Metroplex East/West

Program	Provider	Grantee or Subgrantee	County Served	Contact
TNFP	Women in Need of Generous Support (WiNGS)	Grantee	Primary: Dallas Secondary: Denton, Ellis, Kaufman, Rockwall, Collin	www.wingsdallas.org 214-826-9922 nfp@wingsdallas.org

Region 4 – Piney Woods

Region 4 – Piney Woods

Counties: Anderson, Bowie, Camp, Cass, Cherokee, Delta, Franklin, Gregg, Harrison, Henderson, Hopkins, Lamar, Marion, Morris, Panola, Rains, Red River, Rusk, Smith, Titus, Upshur, Van Zandt, Wood

Program	Provider	Grantee or Subgrantee	County Served	Contact
FAYS	Sabine Valley Regional MHRM Center	Grantee	Bowie, Camp, Cass, Franklin, Gregg, Harrison, Marion, Morris, Panola, Red River, Rusk, Titus, Upshur	communityhealthcore.com/services/family-youth-success/ 903-758-2471; 903-753-9744 FAYS@communityhealthcore.com
FAYS	STARRY, INC.	Grantee	Hopkins, Lamar, Rains	www.starry.org 512-388-8290 info@starry.org
FAYS	Andrews Center	Grantee	Henderson, Smith, Van Zandt, Wood	www.andrewscenter.com 903-597-1351; 903-581-2835 cjones@andrewscenter.com
FAYS	Anderson Cherokee Community Enrichment Services	Grantee	Anderson, Cherokee	www.access-center.org 903-586-3175 jjohnson@access-center.org
		Subgrantee: Kaufman County Shelter	Kaufman	norvillecenter.org 469-376-4510
HOPES	Buckner Children and Family Services, Inc.	Grantee	Primary: Gregg Secondary: Harrison, Rusk, Upshur	www.buckner.org 903-757-9383 rdilday@buckner.org
HOPES	University of Texas Health Science Center at Tyler	Grantee	Henderson, Smith	www.uthct.edu 903-877-7777

Region 4 – Piney Woods

Program	Provider	Grantee or Subgrantee	County Served	Contact
SYSN	Big Brothers Big Sisters Lone Star	Grantee	All Counties	www.bbbstx.org 888-887-2447 info@bbbstx.org
SYSN	Texas Alliance of Boys & Girls Clubs	Grantee	All Counties	www.txbgc.org 512-301-7771 mitzi@txbgc.org
THV	BCFS Health & Human Services	Grantee	Smith	www.discoverbcfs.net 903-526-0882 info@bcfs.net
THV (MIECHV)	University of Texas Health Science Center at Tyler	Grantee	Henderson, Smith	www.uthct.edu 903-877-7777
THV (MIECHV)	Longview Wellness Center, Inc.	Grantee	Gregg, Harrison	www.wellnesspointe.org/family-bridge/ 903-758-2610

Region 5 – Deep East

Region 5 – Deep East

Counties: Angelina, Hardin, Houston, Jasper, Jefferson, Nacogdoches, Newton, Orange, Polk, Sabine, San Augustine, San Jacinto, Shelby, Trinity, Tyler

Program	Provider	Grantee or Subgrantee	County Served	Contact
FAYS	Buckner Children and Family Services, Inc.	Grantee	Hardin, Jefferson, Orange	www.buckner.org 409-861-0582 ghartsfield@buckner.org
FAYS	Deep East Texas Council of Governments	Grantee	Angelina, Houston, Jasper, Nacogdoches, Newton, Polk, Sabine, San Augustine, San Jacinto, Shelby, Trinity, Tyler	www.detcog.gov 936-634-2247; 800-256-6848 info@detcog.gov
Fatherhood EFFECT	Buckner Children and Family Services, Inc.	Grantee	Jefferson	www.buckner.org 800-442-4800 rdilday@buckner.org
HOPES	Buckner Children and Family Services, Inc.	Grantee	Primary: Jefferson Secondary: Orange, Hardin	www.buckner.org 409-966-0976 rdilday@buckner.org
SYSN	Big Brothers Big Sisters Lone Star	Grantee	All Counties	www.bbbstx.org 888-887-2447 info@bbbstx.org
SYSN	Texas Alliance of Boys & Girls Clubs	Grantee	All Counties	www.txbgc.org 512-301-7771 mitzi@txbgc.org
TNFP	City of Port Arthur	Grantee	Jefferson, Hardin, Orange, Chambers	www.portarthurtx.gov 409-983-8877 karla.quigley@portarthurtx.gov

Region 6 – Harris/Bay Area/Montgomery

Region 6 – Harris/Bay Area/Montgomery

Counties: Austin, Brazoria, Chambers, Colorado, Fort Bend, Galveston, Harris, Liberty, Matagorda, Montgomery, Walker, Waller, Wharton

Program	Provider	Grantee or Subgrantee	County Served	Contact
CYD	Harris County Resources for Children and Adults	Grantee	Harris	https://HCR.harriscountytx.gov/ 713-295-2500;713-394-4000 Estella.olguin@harriscountytx.gov
		Subgrantee: Alliance for Multicultural Community Services	Harris	thealliancetxt.org 712-776-4700 ext.110 djoost@thealliancetxt.org
		Subgrantee: Communities in Schools - Southeast	Harris	cistxjv.org 979-256-4432 dmontes@cistxjv.org
		Subgrantee: Connaster & Niksch Consulting, LLC	Harris	713-449-6151 dkniksch@gmail.com ; jenconnatser@gmail.com
		Subgrantee: Equip 24/7	Harris	teamfirstandgoal.org 713-571-9121 tsmith@teamfirstandgoal.org
		Subgrantee: Partnership for the Advancement & Immersion of Refugees (PAIR)	Harris	www.pairhouston.org 713-771-111
		Subgrantee: Pasadena Community Resource Center	Harris	pasadenacommunityresourcecenter.org 281-740-0290
CYD	The Children's Center, Inc.	Grantee	Galveston	www.thechildrenscenterinc.org 409-765-5212 jkeel@tcc1878.org

Region 6 – Harris/Bay Area/Montgomery

Program	Provider	Grantee or Subgrantee	County Served	Contact
		Subgrantee: Artist Boat	Galveston	www.artistboat.org ; kklay@artistboat.org 409-632-0388
		Subgrantee: Galveston Independent School District	Galveston	www.gisd.org/central 832-785-8591; 409-739-5369
		Subgrantee: Iconoclast Artists	Galveston	www.iconoclastartists.org 713-528-0527
		Subgrantee: Sea Star Base	Galveston	www.ssbgalveston.org ; 409-572-2560 ext.135 mleblanc@ssbgalveston.org
FAYS	DePelchin Children's Center	Grantee	Ft. Bend, Harris, Waller	www.depelchin.org 713-730-2335 info@depelchin.org
FAYS	Family Service Center of Galveston County, Texas	Grantee	Chambers, Galveston, Liberty	www.fsc-galveston.org 409-762-8636; centero@fscgal.org
FAYS	Montgomery County Youth Services, Inc.	Grantee	Montgomery, Walker	www.sayyestoyouth.org 936-756-8682; 888-756-8682 conroe@youthmc.org ; huntsville@youthmc.org ; magnolia@youthmc.org ; newcaney@youthmc.org ; woodlands@youthmc.org ; bridgeway@youthmc.org
FAYS	Youth and Family Counseling Services	Grantee	Brazoria, Matagorda, Wharton	www.yfcs.org 979-849-7751 yfcs@yfcs.org
		Subgrantee: YFCS-Angleton	Brazoria	www.yfcs.org 979-849-7751

Region 6 – Harris/Bay Area/Montgomery

Program	Provider	Grantee or Subgrantee	County Served	Contact
FAYS	Colorado County Youth and Family Services, Inc.	Grantee	Austin, Colorado, Fayette	www.ccyfs.org 979-732-8355 star@ccyfs.org
FAYS and FRC and KNP	DePelchin Children's Center	Grantee	Ft. Bend, Harris, Waller	www.depelchin.org 713-730-2335 info@depelchin.org
Fatherhood EFFECT	DePelchin Children's Center	Grantee	Harris	www.depelchin.org 713-730-2335 info@depelchin.org
Fatherhood EFFECT	Family Service Center of Galveston County, Texas	Grantee	Galveston	www.fsc-galveston.org 409-762-8636 fatherhood@fscgal.org
Fatherhood EFFECT	Motivation Education & Training, Inc.	Grantee	Montgomery	www.metinc.org 832-993-7202 met@metinc.org
HOPES	Aware Central Texas	Grantee	Primary: Bell Secondary: Coryell, Milam, Lampasas	www.awarecentraltexas.org 254-213-2986 intake@awarecentraltexas.org
HOPES	Baylor College of Medicine	Grantee	Primary: Harris Secondary: Galveston, Fort Bend, Brazoria, Chambers, Liberty, Montgomery, Waller	www.bcm.edu/departments/pediatrics/sections-divisions-centers/public-health-pediatrics (832) 826-0440 upLIFT; (832) 227-1828 upWORDS upstarthouston@bcm.edu ; upliftformoms@bcm.edu ; upwords@texaschildrens.org
		Subgrantee: Texas Children's Hospital – Houston	Harris	www.texaschildrens.org 832-824-9322

Region 6 – Harris/Bay Area/Montgomery

Program	Provider	Grantee or Subgrantee	County Served	Contact
HOPES	DePelchin Children's Center	Grantee	Primary: Harris Secondary: Brazoria, Chambers, Fort Bend, Galveston, Liberty, Montgomery, Waller	https://www.depelchin.org/ 713-730-2335 info@depelchin.org
		Subgrantee: Collaborative for Children - Houston	Harris	www.collabforchildren.org 713-600-1100
		Subgrantee: Harris County Protective Services for Children and Adults	Harris	resources.harriscountytexas.gov 712-394-4000
HOPES	Motivation Education & Training, Inc.	Grantee	Primary: Montgomery Secondary: Liberty, East Harris	www.metinc.org 281-689-5544 met@metinc.org
HOPES	Stanzel Family Foundation, Inc.	Grantee	Colorado; Fayette	www.sw-pat.org 979-743-9119 josue@sw-pat.org
SMVF	Motivation Education & Training, Inc.	Grantee	Primary: Montgomery, Harris, Waller Secondary: Brazoria, Galveston, Fort Bend	www.metinc.org 281-689-5544 met@metinc.org
SYSN	Big Brothers Big Sisters Lone Star	Grantee	All Counties	www.bbbstx.org 888-887-2447 info@bbbstx.org
SYSN	Texas Alliance of Boys & Girls Clubs	Grantee	All Counties	www.txbgc.org 512-301-7771 mitzi@txbgc.org

Region 6 – Harris/Bay Area/Montgomery

Program	Provider	Grantee or Subgrantee	County Served	Contact
THV	Collaborative for Children	Grantee	Harris	www.collabforchildren.org 713-600-1100 homevisit@collabforchildren.org
THV	DePelchin Children's Center	Grantee	Harris	www.depelchin.org 713-730-2335 info@depelchin.org
THV	Houston ISD	Grantee	Harris	https://www.houstonisd.org/HIPPY 713-967-5298 info@houstonisd.org
THV	Motivation Education & Training, Inc.	Grantee	Montgomery	www.metinc.org 281-689-5544 met@metinc.org
TNFP	Baylor College of Medicine	Grantee	Primary: Harris Secondary: Fort Bend	www.bcm.edu/healthcare/care-centers/teen-health-clinic 281-820-2995 Lakeisha.Vallier-Scott@bcm.edu
TNFP	City of Houston	Grantee	Harris	https://houstontx.gov/health/nfp/ 832-393-4112 NurseFamilyPartnership@houstontx.gov
		Subgrantee: Brighter & Brighter PLLC	Harris	www.brighter-brighter.com 713-808-9553
TNFP	Texas Children's Health Plan	Grantee	Primary: Harris, Galveston Secondary: Montgomery, Fort Bend, Chambers, Brazoria	www.texaschildrenshealthplan.org 800-990-8247 HealthPlan@texaschildrens.org

Region 7 – Central Texas/Waco/Capital Area

Region 7 – Central Texas/Waco/Capital Area

Counties: Bastrop, Bell, Blanco, Bosque, Brazos, Burleson, Burnet, Caldwell, Coryell, Falls, Fayette, Freestone, Grimes, Hamilton, Hays, Hill, Lampasas, Lee, Leon, Limestone, Llano, Madison, McLennan, Milam, Mills, Robertson, San Saba, Travis, Washington, Williamson

Program	Provider	Grantee or Subgrantee	County Served	Contact
CYD	Boys and Girls Club of Central Texas, Inc.	Grantee	Bell	www.bgctx.org/ 254-699-5808 info@bgctx.org
CYD	City of Austin	Grantee	Travis	austintexas.gov/department/health 512-972-6217 Rosa.MartinezSuazo@austintexas.gov
		Subgrantee: Del Valle Healthy Adolescent Project	Travis	www.austintexas.gov/department/austin-healthy-adolescent-aha-program 512-972-5087
		Subgrantee: E4 Youth	Travis	www.e4youth.org 970-371-9227
		Subgrantee: Mexic-Arte Museum	Travis	www.mexic-artemuseum.org 512-200-7268
		Subgrantee: Workers Assistance Program - Austin	Travis	www.youthadvocacy.org 512-799-1025
CYD	Communities in Schools of the Heart of Texas	Grantee	McLennan	www.cishot.org 254-753-6002 info@cis-hot.org
FAYS	Greater San Marcos Youth Council	Grantee	Hays	www.gsmyc.org 512-754-0500 info@gsmyc.org
FAYS	Twin City Mission	Grantee	Brazos, Burleson, Falls, Grimes, Leon, Limestone, Madison, Milam, Robertson, Washington	www.twincitymission.org 979-260-7336; 800-865-9921 tcmyfs@twincitymission.org

Region 7 – Central Texas/Waco/Capital Area

Program	Provider	Grantee or Subgrantee	County Served	Contact
FAYS	Youth and Family Alliance (dba Lifeworks)	Grantee	Travis	www.lifeworksaustin.org 512-735-2400 susan.mcdowell@lifeworksaustin.org
FAYS	STARRY, INC.	Grantee	Bell, Bosque, Coryell, Hamilton, Lampasas, McLennan, Williamson	www.starry.org 512-388-8290 info@starry.org
FAYS	New Horizons Ranch and Center, Inc. (Family First)	Grantee	Mills, San Saba	www.newhorizonsinc.com ; 325-437-1852 Contact via website
FAYS and KNP	ACH Child and Family Services	Grantee	Hill	www.ACHservices.org 817-335-4673; 888-296-8099 info@achservices.org
FAYS	Anderson Cherokee Community Enrichment Services (dba ACCESS)	Grantee	Freestone	www.access-center.org 877-811-1289 jjohnson@access-center.org
FAYS	Colorado County Youth and Family Services, Inc.	Grantee	Fayette	www.ccyfs.org 979-732-8355 star@ccyfs.org
FAYS	Connections Individual and Family Services, Inc.	Grantee	Bastrop, Caldwell, Lee	www.connectionsifs.org 830-629 6571 Ext. 232 info@connectionsofs.org
FAYS	K'STAR, Inc.	Grantee	Blanco, Burnet	www.kstar.org 830-896-5404 melodylowman@kstar.org
FAYS (KNP)	New Horizons Ranch and Center	Grantee	Mills, San Saba	www.nh-families.org 325-437-1852 Contact via website

Region 7 – Central Texas/Waco/Capital Area

Program	Provider	Grantee or Subgrantee	County Served	Contact
Fatherhood EFFECT	Housing Authority of the City of Austin	Grantee	Travis	www.hacanet.org 512-477-4488 info@hacanet.org
Fatherhood EFFECT	STARRY, INC.	Grantee	McLennan, Bell	www.starry.org 254-244-2400 fatherhoodinfo@starry.org
HOPES	The SAFE Alliance	Grantee	Primary: Travis Secondary: Williamson	www.safeaustin.org 512-267-7233 Info@safeaustin.org
		Subgrantee: Any Baby Can of Austin	Travis	www.anybabycan.org 512-454-3743
HOPES	Family Abuse Center	Grantee	McLennan	www.hopeswaco.org 257-732-0482 info@familyabusecenter.org
HOPES	Project Unity	Grantee	Brazos	www.projectunitytx.org 979-595-2900 info@project-unity.org
HOPES	Stanzel Family Foundation, Inc.	Grantee	Fayette	www.sw-pat.org 979-743-9119 josue@sw-pat.org
SMVF	Boys & Girls Club of Central Texas	Grantee	Bell, Coryell, Lampasas, Williamson, McLennan	www.txbgc.org 512-301-7771 info@bgctx.org
		Subgrantee: Texas A&M University		www.tamu.edu 979-845-3211
		Subgrantee: Aware Central Texas		awarecentraltexas.org 254-813-0968

Region 7 – Central Texas/Waco/Capital Area

Program	Provider	Grantee or Subgrantee	County Served	Contact
		Subgrantee: Strong Star (University of Texas Health & Science Center at San Antonio)		www.patriot.uthscsa.edu ; www.strongstar.org 210-562-6726
SYSN	Big Brothers Big Sisters Lone Star	Grantee	All Counties	www.bbbstx.org 888-887-2447 info@bbbstx.org
SYSN	Texas Alliance of Boys & Girls Clubs	Grantee	All Counties	www.txbgc.org 512-301-7771 mitzi@txbgc.org
TNFP	Any Baby Can of Austin, Inc.	Grantee	Primary: Travis, Williamson Secondary: Bastrop, Hays	www.anybabycan.org 512-454-3743 info@anybabycan.org
TNFP	Hillcrest Baptist Medical Center	Grantee	Primary: McLennan Secondary: Bell, Hill, Bosque, Coryell, Limestone, Falls	www.bswhealth.com/locations/hillcrest/specialties/womens-health/nurse-family-partnership-program 254-202-1130 HBMC_NFP@BSWHealth.org
TNFP	Texas A&M University Health Science Center - College of Nursing	Grantee	Brazos	https://nursing.tamu.edu/ 979-436-0110 nfp@tamu.edu
THV (MIECHV)	Bastrop County	Grantee	Bastrop	www.bastropcares.org 512-581-4055 debbie@bastropcares.org
THV (MIECHV)	Community Action, Inc. of Central Texas	Grantee	Primary: Hays Secondary: Caldwell	www.communityaction.com 512-392-1161; 512-665-5631 mcampbell@communityaction.com

Region 7 – Central Texas/Waco/Capital Area

Program	Provider	Grantee or Subgrantee	County Served	Contact
THV	Texas A&M University Health Science Center	Grantee	Brazos	nursing.tamu.edu/hippy 979-436-0110 nursingcomm@tamu.edu
THV (MIECHV)	United Way for Greater Austin	Grantee	Primary: Travis Secondary: Hays; Williamson	www.unitedwayaustin.org 512-475-6267 Hello@uwatx.org">Hello@uwatx.org

Region 8 – South Central/Hill Country

Region 8 – South Central/Hill Country

Counties: Atascosa, Bandera, Bexar, Calhoun, Comal, DeWitt, Dimmit, Edwards, Frio, Gillespie, Goliad, Gonzales, Guadalupe, Jackson, Karnes, Kendall, Kerr, Kinney, La Salle, Lavaca, Maverick, Medina, Real, Uvalde, Val Verde, Victoria, Wilson, Zavala

Program	Provider	Grantee or Subgrantee	County Served	Contact
Early Intervention Court	Bexar County	Grantee	Bexar	www.bexar.org/2209/Early-Intervention-Program 210-335-2829
CYD	Southwest Key Programs, Inc.	Grantee	Bexar	www.southwestkey.org 512-462-2181 youthservices@swkey.org
FAYS	Mid-Coast Family Services, Inc.	Grantee	Calhoun, DeWitt, Jackson, Lavaca, Victoria	Midcoastfamily.org 361-575-7842 info@midcoastfamily.org
FAYS	Connections Individual and Family Services, Inc.	Grantee	Comal, Guadalupe, Wilson, Karnes, Atascosa, Frio, Zavala, Gonzales, Caldwell, Bastrop, and Lee	www.connectionsifs.org 830-629-6571 Ext. 232 info@connectionsofs.org
FAYS	K'STAR, Inc.	Grantee	Bandera, Blanco, Burnet, Edwards, Gillespie, Kendall, Kerr, Kimble, Llano, Mason, Medina, Menard, Real, Uvalde	www.kstar.org 830-896-5404 melodylowman@kstar.org
FAYS	Serving Children and Adults in Need, Inc.	Grantee	Dimmit, Duval, Jim Hogg, La Salle, Maverick, Starr, Webb, Zapata	www.scan-inc.org 956-724-3177 info@scan-inc.org
FAYS	BCFS Health and Human Services	Grantee	Bexar, Goliad, Kinney	https://discoverbcfs.net/FAYS 210-283-5183 (San Antonio) info@bcfs.net

Region 8 – South Central/Hill Country

Program	Provider	Grantee or Subgrantee	County Served	Contact
HOPES	Serving Children and Adults in Need, Inc.	Grantee	Primary: Maverick Secondary: Zavala, Dimmit	www.scan-inc.org 956-724-3177 info@scan-inc.org
HOPES	St. Jude's Ranch for Children - Texas Region, Inc.	Grantee	Comal, Guadalupe	https://sjrctexas.org 210-876-6763 prevention@sjrctexas.org
HOPES	United Way of San Antonio and Bexar County	Grantee	Bexar	www.unitedwaysatx.org 210-352-7000 jrichardson@unitedwaysatx.org
		Subgrantee:	Bexar	www.anybabycansa.org 210-227-0170
		Subgrantee:	Bexar	www.ccaosa.org 210-222-1294
		Subgrantee:	Bexar	www.chcsbc.org 210-261-1000
		Subgrantee:	Bexar	www.family-service.org 210-299-2400

Region 8 – South Central/Hill Country

Program	Provider	Grantee or Subgrantee	County Served	Contact
		Subgrantee: Respite Care of San Antonio	Bexar	www.respitecaresa.org 210-737-1212
		Subgrantee: The Children's Shelter - San Antonio	Bexar	www.childrensshelter.org 210-212-2500
		Subgrantee: The Center for Health Care Services - SA	Bexar	www.chcsbc.org 210-261-1000
		Subgrantee: Depelchin Children's Center	Bexar	www.depelchin.org 210-691-3222
		Subgrantee: Martinez Street Women's Center - SA	Bexar	www.mswomenscenter.org 210-908-9772
SMVF	United Way of San Antonio and Bexar County	Grantee	Bexar	www.unitedwaysatx.org 210-352-7000 asasseville@unitedwaysatx.org
		Subgrantee: Big Brothers Big Sisters of San Antonio	Bexar	www.bigmentor.org 210-225-6322

Region 8 – South Central/Hill Country

Program	Provider	Grantee or Subgrantee	County Served	Contact
		Subgrantee: Any Baby Can of San Antonio	Bexar	www.anybabycansa.org 210-227-0170
		Subgrantee: Family Service Association of San Antonio	Bexar	www.family-service.org 210-299-2400
SYSN	Big Brothers Big Sisters Lone Star	Grantee	Bexar	www.bbbstx.org 888-887-2447 info@bbbstx.org
SYSN	Texas Alliance of Boys & Girls Clubs	Grantee	All Counties	www.txbgc.org 512-301-7771 mitzi@txbgc.org
THV (MIECHV)	United Way of San Antonio and Bexar County	Grantee	All Counties	www.unitedwaysatx.org 210-352-7000 unitedway@unitedwaysatx.org
THV (MIECHV)	Victoria County Health Department	Grantee	Bexar	www.vcphd.org 361-578-6281 Contact via Website
TNFP	Bexar County Hospital District	Grantee	Victoria	www.universityhealthsystem.com/services/pregnancy-childbirth/support/nurse-family-partnership 210-658-4000 Public.Relations@uhs-sa.com
TNFP	The Children's Shelter	Grantee	Bexar	www.childrensshelter.org 210-212-2500 info@chshel.org

Region 9 – Permian/Concho

Region 9 – Permian/Concho

Counties: Andrews, Borden, Coke, Concho, Crane, Crockett, Dawson, Ector, Gaines, Glasscock, Howard, Irion, Kimble, Loving, Martin, Mason, McCulloch, Menard, Midland, Pecos, Reagan, Reeves, Schleicher, Sterling, Sutton, Terrell, Tom Green, Upton, Ward, Winkler

Program	Provider	Grantee or Subgrantee	County Served	Contact
FAYS	BCFS Health and Human Services	Grantee	Crockett, Schleicher, Sutton	https://discoverbcfs.net/FAYS 830-768-2755 info@bcfs.net
FAYS	High Sky Children's Ranch, Inc.	Grantee	All Counties	www.staytogetherprogram.org 432-699-1466 staytogether@highsky.org
FAYS	K'STAR, Inc.	Grantee	Kimble, Mason, Menard	www.kstar.org 830-896-5404 melodylowman@kstar.org
FAYS	New Horizons Ranch and Center, Inc. (Family First)	Grantee	McCulloch	www.newhorizonsinc.com 325-437-1852 Contact via website
FAYS (KNP)	New Horizons Ranch and Center, Inc. (Family First)	Grantee	McCulloch	www.nh-families.org 325-437-1852 Contact via website
HOPES	Ector County	Grantee	Ector	http://www.co.ector.tx.us/page/ector.County.Judge 432-498-4100 LILIANA.GRAJEDA@ectorcountytexas.gov
SYSN	Big Brothers Big Sisters Lone Star	Grantee	All Counties	www.bbbstx.org 888-887-2447 info@bbbstx.org
SYSN	Texas Alliance of Boys & Girls Clubs	Grantee	All Counties	www.txbgc.org 512-301-7771 mitzi@txbgc.org

Region 9 – Permian/Concho

Program	Provider	Grantee or Subgrantee	County Served	Contact
THV - GR	Children's Advocacy Center of Greater West Texas	Grantee	Tom Green	www.cacgreaterwtx.org 325-653-4673 info@cacgreaterwtx.org
THV (MIECHV)	The University of Texas Permian Basin	Grantee	Primary: Ector; Midland Secondary: Andrews, Crane, Glasscock, Howard, Martin, Upton, Ward, Winkler	https://www.utpb.edu/academics/colleges/cohshp/departments/community-family-health/index 432-552-4025 First5@utpb.edu

Region 10 – El Paso

Region 10 – El Paso

Counties: Brewster, Culberson, El Paso, Hudspeth, Jeff Davis, Presidio

Program	Provider	Grantee or Subgrantee	County Served	Contact
CYD	El Paso Human Services, Inc.	Grantee	El Paso	elpasohumanservices.org 915-534-7227 susanareza@elpasohumanservices.org
		Subgrantee: Paso Del Norte Center of Hope	El Paso	www.pdncoh.org 915-307-2175
		Subgrantee: Project Vida	El Paso	www.pvida.net/ 915-533-7057 ext.208
		Subgrantee: Transmountain Softball League Charitable Trust	El Paso	robertgauna08@gmail.com 915-821-0013
		Subgrantee: YWCA of El Paso	El Paso	ywcaelpaso.org 915-533-7921
FAYS & FRC	El Paso Center for Children, Inc.	Grantee	El Paso	www.epccinc.org 915-565-8361 info@epccinc.org
		Subgrantee: Paso Del Norte Children's Development Center - El Paso	El Paso	www.pdnchildrens.org 915-544-8484
		Subgrantee: United Way of El Paso County	El Paso	www.unitedwayelpaso.org 915-533-2434
FAYS	High Sky Children's Ranch, Inc.	Grantee	Brewster, Culberson, Hudspeth, Jeff Davis, Presidio	www.staytogetherprogram.org 432-699-1466 staytogether@highsky.org
HOPES	El Paso Center for Children, Inc.	Grantee	El Paso	www.epccinc.org 915-565-8361 info@epccinc.org

Region 10 – El Paso

Program	Provider	Grantee or Subgrantee	County Served	Contact
SMVF	Child Crisis Center of El Paso	Grantee	El Paso	https://childcrisiscenterofelpaso.org/ 915-562-7955 mcordero@childcrisiselp.org
SYSN	Big Brothers Big Sisters Lone Star	Grantee	All Counties	www.bbbstx.org 888-887-2447 info@bbbstx.org
SYSN	Texas Alliance of Boys & Girls Clubs	Grantee	All Counties	www.txbgc.org 512-301-7771 mitzi@txbgc.org
TNFP	El Paso County Hospital District	Grantee	El Paso	https://umcfoundationelpaso.org/nurse-family-partnership 915-521-7162 vwatters@umcelpaso.org

Region 11 – South Texas/Corpus Christi/RGV

Region 11 – South Texas/Corpus Christi/RGV

Counties: Aransas, Bee, Brooks, Cameron, Duval, Hidalgo, Jim Hogg, Jim Wells, Kenedy, Kleberg, Live Oak, McMullen, Nueces, Refugio, San Patricio, Starr, Webb, Willacy, Zapata

Program	Provider	Grantee or Subgrantee	County Served	Contact
CYD	City of Corpus Christi	Grantee	Nueces	www.ccparkandrec.com 361- 826-7529 SandraA@cctexas.com
		Subgrantee: Boys & Girls Club of Corpus Christi	Nueces	www.bgccb.org 361-853-2505
		Subgrantee: Communities in Schools - Corpus Christi	Nueces	www.ciscoastalbend.org 361-696-4030 ext. 1
		Subgrantee: YWCA of Corpus Christi	Nueces	www.ywcacc.org 361-857-5661 ext.103
CYD	Rio Grande Valley Empowerment Zone Corporation	Grantee	Willacy	www.rgvez.org 956-424-3276 sam@rgvez.org
		Subgrantee: Lyford Consolidated Independent School District	Willacy	lyfordcisd.net 956-347-3910
		Subgrantee: Raymondville Independent School District	Willacy	raymondvilleisd.org 956-689-8181

Region 11 – South Texas/Corpus Christi/RGV

Program	Provider	Grantee or Subgrantee	County Served	Contact
CYD	Southwest Keys Programs, Inc.	Grantee	Webb	www.swkey.org 512-462-2181 youthservices@swkey.org
CYD	Good Samaritan Center of San Antonio dba Good Samaritan	Grantee	Cameron	goodsamtx.org 512-462-2181 Youth.info@goodsamtx.org
FAYS	Buckner Children and Family Services, Inc.	Grantee	Brooks, Cameron, Hidalgo, Kenedy, Willacy	www.buckner.org 956-630-6285 rdilday@buckner.org
FAYS	Circles of Care	Grantee	Nueces, Kleberg and Jim Wells	www.circlesofcareinc.org 361-852-3812 rchavez@circlesofcareinc.org
FAYS	Connections Individual and Family Services, Inc.	Grantee	Comal, Guadalupe, Wilson, Karnes, Atascosa, Frio, Zavala, Gonzales, Caldwell, Bastrop, and Lee	www.connectionsifs.org 830-629-6571 Ext. 232 info@connectionsofs.org
FAYS	Serving Children and Adults in Need, Inc.	Grantee	Dimmit, Duval, Jim Hogg, La Salle, Maverick, Starr, Webb, Zapata	www.scan-inc.org 956-724-3177 info@scan-inc.org
HOPES and FRC	BCFS Health and Human Services	Grantee	Cameron	https://discoverbcfs.net/Harlingen/ ; https://discoverbcfs.net/HOPES/ 956-230-3849 JW1014@bcfs.net
HOPES and FRC	Easter Seals Rio Grande Valley	Grantee	Hidalgo	www.easterseals-rgv.org 956-631-9171 referrals@easterseals-rgv.org

Region 11 – South Texas/Corpus Christi/RGV

Program	Provider	Grantee or Subgrantee	County Served	Contact
HOPES	Education Service Center Region 2	Grantee	Primary: Nueces Secondary: San Patricio, Kleberg	https://www.esc2.net/ 361-561-8400
HOPES	Serving Children and Adults in Need, Inc.	Grantee	Webb	www.scan-inc.org 956-724-5111 info@scan-inc.org
SMVF	The Council on Alcohol & Drug Abuse - Coastal Bend	Grantee	Kleberg, Nueces	www.coada-cb.org 361-854-9199 msweeting@coada-cb.org
SYSN	Big Brothers Big Sisters Lone Star	Grantee	All Counties	www.bbbstx.org 888-887-2447 info@bbbstx.org
SYSN	Texas Alliance of Boys & Girls Clubs	Grantee	All Counties	www.txbgc.org 512-301-7771 mitzi@txbgc.org
TNFP	City of Laredo	Grantee	Primary: Webb Secondary: Zapata, Jim Hogg	https://www.cityoflaredo.com/health/Healthindex.htm 956-523-7848 rvela@ci.laredo.tx.us
TNFP	Doctors Hospital Renaissance	Grantee	Hidalgo, Willacy	www.dhrhealth.com/services/womens-hospital 956-362-4190 nfpwh@dhr-rgv.com
THV (MIECHV)	Easter Seals Rio Grande Valley	Grantee	Hidalgo, Cameron, Willacy, Hidalgo, Starr	www.easterseals-rgv.org 956-631-9171 referrals@easterseals-rgv.org
THV (MIECHV)	United Way of Coastal Bend	Grantee	Nueces	www.uwcb.org 361-882-2529 uwcb@uwcb.org