



**TEXAS**  
Department of Family  
and Protective Services

# Prevention and Early Intervention Provider Directory

Fiscal Year 2022



# Contents

---

- Introduction ..... 3
- PEI at a Glance ..... 4
  - Notable Activities ..... 4
- Innovations ..... 6
  - Family Resource Centers (FRCs) ..... 6
  - Kinship Navigator Program ..... 6
  - Early Court Liaison ..... 7
  - Bexar County Early Intervention Court ..... 7
  - Family Self Sufficiency ..... 8
- PEI Programs and Provider Information ..... 9
  - CYD: Community Youth Development ..... 10
    - CYD Overview ..... 10
    - CYD Providers ..... 12
  - Fatherhood EFFECT: Educating Fathers for Empowering Children Tomorrow ..... 16
    - Fatherhood EFFECT: Overview ..... 16
    - Fatherhood EFFECT Providers ..... 18
  - FAYS: Family and Youth Success ..... 19
    - FAYS Overview ..... 19
    - FAYS Providers ..... 21
  - HIP: Helping through Intervention and Prevention (through August 2022) ..... 25
    - HIP Overview ..... 25
    - HIP Providers ..... 27
  - HOPES: Healthy Outcomes through Prevention and Early Support ..... 28
    - HOPES Overview ..... 28
    - HOPES Providers ..... 30
  - Service Members, Veterans and Families (SMVF) ..... 34
    - SMVF Overview ..... 34
    - SMVF Providers ..... 36
  - SYSN: Statewide Youth Services Network ..... 37
    - SYSN Overview ..... 37
    - SYSN Providers ..... 38
  - THV: Texas Home Visiting ..... 39

THV Providers .....	41
TNFP: Texas Nurse-Family Partnership .....	43
TNFP Providers .....	45
PEI Program by DFPS Region and Associated Counties .....	47
Region 1 .....	48
Region 2 .....	51
Region 3 .....	53
Region 4 .....	57
Region 5 .....	59
Region 6 .....	60
Region 7 .....	65
Region 8 .....	70
Region 9 .....	74
Region 10 .....	76
Region 11 .....	78

## Introduction

---

Senate Bill 1574 established PEI in 1999 to consolidate child abuse and neglect prevention, juvenile delinquency prevention, and early intervention programs within the jurisdiction of a single state agency. It has grown to include the Office of Child Safety and Texas Home Visiting.

PEI uses a public health framework to provide early intervention or prevent risk factors that lead to child maltreatment and fatalities, and support positive child, family, and community outcomes. A public health framework uses data and stakeholder feedback to assess the effectiveness of programs and adjusts program delivery accordingly.

PEI aims to improve the well-being of all Texans by acting upon a broad range of factors and conditions that influence child well-being. Preventing child maltreatment and other negative outcomes includes addressing the underlying issues, including poverty, family instability, poor health, substance abuse, and mental illness.

PEI organizes its communication efforts toward three major goals: promoting public awareness, engaging with communities to fund prevention services and coalitions, and positioning PEI as a resource hub.

By providing access to health, wellness, and family-strengthening programs, PEI will achieve a wide array of positive outcomes that benefit not only those served, but local communities and Texas as a whole.

# PEI at a Glance

---

## Notable Activities

Since 2021, PEI has:

- Contracted with The University of Texas Health Science Center-Tyler to update the community maltreatment risk maps (September 2021) to meet its statutory requirement for increasing the number of families receiving prevention and early intervention services. PEI collaborated with various community partners to update the risk factors captured within the mapping tool. PEI continues to utilize the updated risk maps to inform and develop all relevant requests for applications.
- Planned and implemented projects using American Rescue Plan Act supplemental funding through our CBCAP (\$25 million) and MIECHV programs (\$2.6 million). In March 2021, the Office of Child Safety published the Fiscal Year 2020 Child Maltreatment Fatalities and Near Fatalities Annual Report in accordance with Texas Family Code §261.204. This report supports internal and external efforts to provide awareness on and address risk factors associated with child maltreatment. In addition, the report encourages the ongoing work of PEI to promote positive outcomes for Texas children within their established communities and families.
- PEI continues to promote outreach campaigns through its flagship public-facing social media campaign (GetParentingTips.com), utilizing wide-scaled prevention messaging to address both child and adolescent safety. These campaigns included PEI's participation in Safe Sleep Week (March 22nd-26th), Child Abuse Prevention Month (April), Water Safety Month (May) and Mental Health Awareness Month (May). PEI also offers comprehensive public messaging toolkits for grantees and all members of the Prevention and Early Intervention Community, kicking off this initiative with a Bullying Prevention Month Toolkit (October 2020) followed by Healthy Relationships (February 2021), Child Abuse Prevention Month (April 2021), Mental Health Awareness and Water Safety Month (May 2021), Breastfeeding Awareness and Promotion (August 2021) and more. These toolkits are available for download on the DFPS Prevention and Early Intervention Grantee Information Hub webpage.
- Partnered with PEI grantees to ensure Texas families did not experience a disruption in supports available in their community during the COVID-19 pandemic. PEI provided guidance and support to its grantees to assist them in pivoting to virtual work to continue being a frontline support for families coping with the impacts and stress brought on by COVID-19, provide basic needs support, and serve as a connector to other support services in the community.
- Expanded grantees' access to subject matter experts, technical assistance, training sessions, event workshops, and opportunities for peer to peer learning through the vendor pool of experts.
- Began collaborating across DFPS divisions and with national, state, and local partners to enhance DFPS's use of family-centered, preventative, data-driven, and evidence-based services and supports to support DFPS's work around the Family First Prevention Services Act.
- Initiated strategic efforts to address issues of race, equity, diversity, and inclusion both internally and within overall prevention efforts in Texas. PEI conducted an internal assessment of diversity, equity and inclusion (DEI) within the division. Based on the results of the assessment, PEI commissioned a project charter and subsequently created a DEI workplan to guide the implementation of initiatives to promote equity within PEI and, most importantly, within the communities and families served.

<b>FY2022 PEI Budget Information</b>	<b>Amount</b>
Annual Direct Service Budget	\$112,438,021
Total Direct Service Program Grants	143
Total Support Contracts	31

<b>Program</b>	<b>Counties Covered</b>	<b>Grants</b>	<b>Subawardees</b>	<b>Evidence-based Models Used</b>
<b>CYD: Community Youth Development</b>	16	17	42	Mentoring, Youth Advisory Committee, Youth Leadership Development, Family and Caregiver Engagement component, Life Skills, Recreational Activities, Academic Support, Youth Based Curriculum
<b>Fatherhood EFFECT</b>	9	7	1	24/7 Dads, Parents As Teachers
<b>HIP: Helping through Intervention and Prevention</b>	75	9		SafeCare, Effective Black Parenting Program (EBPP), Healthy Families America, Nurturing Parenting, Parents As Teachers, Triple P
<b>HOPES: Healthy Outcomes through Prevention and Early Support</b>	28 Primary Counties	28	29	Abriendo Puertas, Circle of Security, Incredible Years, Family Connects, HIPPY, Nurturing Parenting, Moving Beyond Depression, Nurturing Fathers, Parent Café, Parents As Teachers, SafeCare, STEP, TBRI, Teaching Family, Triple P, 24/7 Dad
<b>SMVF: Texas Service Members Veterans and Families</b>	12	5	7	Boys & Girls Club Experience, Systematic Training for Effective Parenting (STEP), STRONG STAR, Parents as Teachers, Stewards of Children, Nurturing Parenting, SafeCare, SMART program, Triple P
<b>FAYS: Family and Youth Success</b>	254	28	7	Counseling (trauma-informed, several modalities), Parent education (evidence-based and research supported), Youth Development/Education (evidence-based and research supported)
<b>SYSN: Statewide Youth Services Network</b>	254	2	59	Boys and Girls Club SMART programs, Big Brothers Big Sisters mentoring
<b>THV: Texas Home Visiting</b>	20 Primary Counties	20	26	Family Connects, Healthy Families America, Home Instruction for Parents of Preschool Youngsters (HIPPY), Parents As Teachers (PAT), Nurse-Family Partnership (NFP)
<b>TNFP: Texas Nurse-Family Partnership Program</b>	53	16		Nurse-Family Partnership (NFP)

# Innovations

## Family Resource Centers (FRCs)

Embedded within existing PEI Grantees, Family Resource Centers (FRCs) began operating in September 1, 2021. FRCs serve as a welcoming hub of support, services, and opportunities for families that reflects community needs, culture, and interests.

All PEI FRCs are required to include resource navigation in their service delivery model. Other service activities include parent education, child development education and/or screening, parent leadership opportunities, skill-based workshops, basic needs assistance, and more. FRCs allow for families to engage in services at varying levels of intensity, depending on the service type. Each FRC is unique and responsive to their community's needs:

Provider	County Served	Service Area Highlights
<b>BCFS Health and Human Services</b>	Cameron	Local headquarters offering group therapeutic workshops; caregiver support groups; parent advisory committees; group connection events; skill-based workshops.
<b>DePelchin Children's Center</b>	Harris	Community center offering parenting education and money management courses; caregiver support groups, drop-in services; child development resources.
<b>El Paso Center for Children</b>	El Paso	Community center in a public housing location offering parenting education; basic needs assistance; life skills classes; family health and wellness activities; caregiver support groups; drop-in services.
<b>Easter Seals Rio Grande Valley</b>	Hidalgo	Community center offering counseling; diaper/basic needs pantry; legal assistance; group connection events; development screenings; drop-in play.
<b>SAFE Alliance</b>	Travis (78752 and 78753)	School-based program offering parenting groups; life skills classes; parent-child STEAM classes; leadership development.
<b>MHMR of Tarrant County</b>	Parker	Trust-Based Relational Therapy (TBRI), Nurturing Parenting, story times, health eating workshops, and parent-child groups.
<b>BCFS Health and Human Service</b>	Bexar (78203, 78220, 78202,78207)	Targeted high needs areas by ZIP Code; family voice initiatives, implementation and redesign of intake procedures based on the National Family Services Network Model.

## Kinship Navigator Program

Congress appropriated funds under Title IV-B, subpart 2 of the Social Security Act to support the development, implementation, enhancement, or evaluation of evidence-based kinship navigator programs. Kinship navigator programs are designed to support the many informal kinship placements that occur outside the child welfare system.

In Fiscal Year (FY) 2021, PEI grantees developed implementation plans for their perspective kinship navigator programs. Program implementation efforts are underway for the current fiscal year. Grantees will take part in an implementation evaluation conducted by The Center for Violence Prevention of the University of Texas Medical Branch to inform further future implementation.

Grantee Service Counties Include:

- ACH Child and Family Services – Hill, Johnson, Palo Pinto, Parker, and Tarrant
- Catholic Charities – Lubbock, Crosby, Hale, Hockley, and Lynn
- DePelchin Children’s Center – Harris, Fort Bend, and Waller
- New Horizons, Inc. – Brown, Jones, and Taylor (Some virtual services to Callahan, Coleman, McCulloch, Mills, San Saba)

## Early Court Liaison

Early Intervention Court Liaisons in identified Child Protection Courts within Bell, Lubbock, and Galveston counties. Court Liaisons:

- Increase connectivity between Child Protection Courts and local resources.
- Bring a judicial and legal voice to local community collaborations around family support and prevention work.
- Develop prevention service capacity, focusing on FFPSA eligible services, in targeted communities through partnerships with local referral networks to better connect and inform families of services available.
- Increase alignment between community services with Family First Prevention and Services Act requirements so that those programs can draw down federal funds.
- Conduct readiness and local needs assessments to determine feasibility for implementation of specialty courts, like infant/toddler or family drug treatment courts.
- Help courts identify opportunities for parent navigation, kinship navigation, and other peer leadership and support programs.

At present, OCA is hiring for these positions while PEI holds stakeholder meetings convened by the family court judge, within each service community.

## Bexar County Early Intervention Court

The Bexar County Early Intervention Court Program started in Fiscal Year 2017 to provide a comprehensive, integrated, and coordinated systems approach to help families within Bexar County. This includes developing, supporting and facilitating individualized services (i.e.: home-based assessments, home visiting programs provide evidence-based parent education, home visiting, and counseling) to meet the needs of some of Bexar county’s most vulnerable families. A speaker’s bureau and learning community have been established to help bring together community partners to address child maltreatment through prevention.

### ❖ Population Served

- Infants, toddlers and parents with some risk, but who would benefit from targeted support or who are at risk of involvement with Child Protective Services (CPS);
- Children, infants, and families who have been identified by Child Protective Services (CPS) as ideal candidates for intensive, family preservation efforts that prevent future involvement in



the child welfare system.

❖ Measured Outcomes

- Children remain safe during services, within 1 year, and within 3 years.
- Percent of infants/toddlers and families that will be reunited within 3 months, 6 months, and 12 months.
- Percent of parents who graduate from the Early Intervention Program who will have a job or be enrolled in school.
- Percent of child/parent dyads with improved relationships and attachment indicators.
- Percent of young children enrolled in a safe, quality child care or home setting who have working parents or parents in school.

Provider	Organization Name	County Served	Website / Email Contact	Phone Contact
Bexar County	Bexar County	Bexar	<a href="http://www.bexar.org/2209/Early-Intervention-Program">www.bexar.org/2209/Early-Intervention-Program</a>	(210) 335-2829

## Family Self Sufficiency

**Family Self Sufficiency (FSS)** is a program that aligns services to families in conjunction with their local housing authority. Supports typically include parent education as well as other opportunities that build protective factors such as parent support groups, case management, and coordinated assessment and referrals within the community.

Currently PEI has one FSS initiative located in Bryan/College Station at the Brazos Valley Council of Governments.

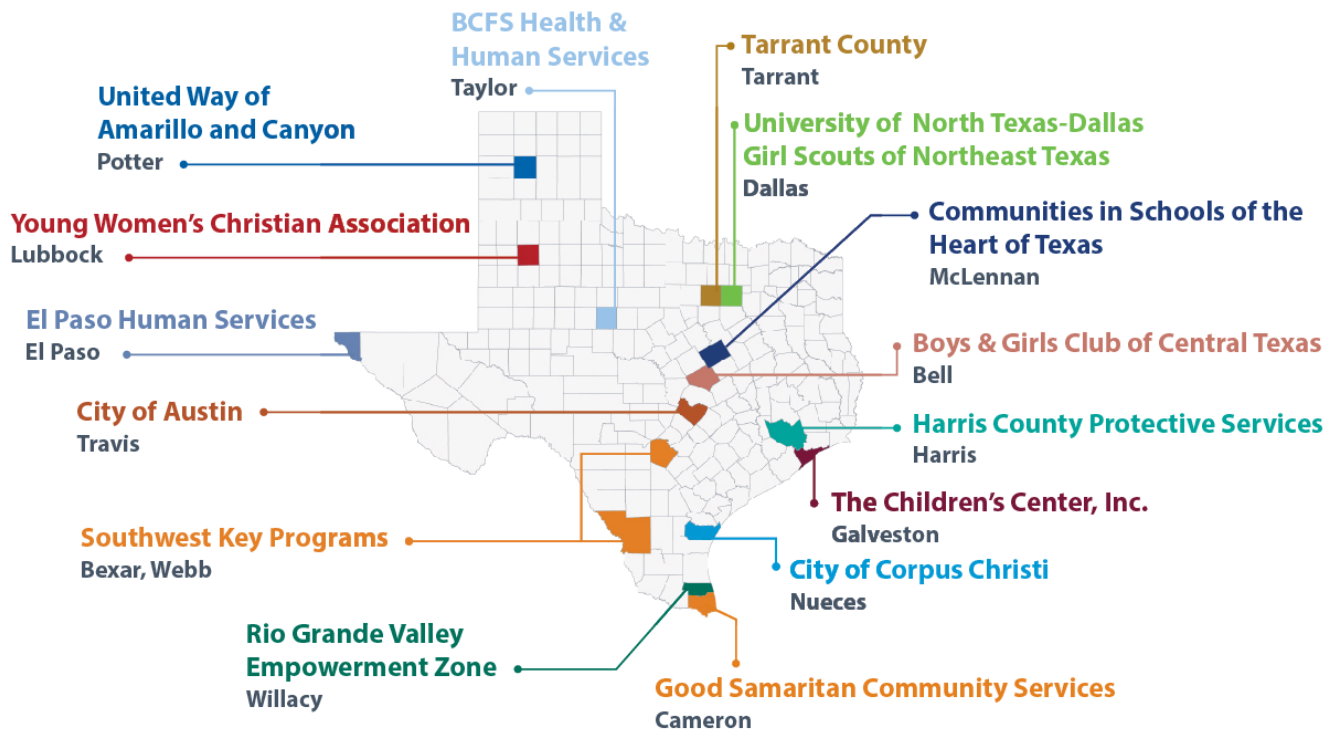
Provider	Organization Name	County Served	Website / Email Contact	Phone Contact
Brazos Valley Council of Governments	Unity Partners	Brazos, Burleson, Grimes, Leon, Madison, Robertson and Washington	<a href="mailto:jmansill@project-unity.org">jmansill@project-unity.org</a>	(979) 595-2900

## PEI Programs and Provider Information

---



# CYD: Community Youth Development



## CYD Overview

Through the CYD program, PEI provides funding and technical assistance that affords community-based organizations the opportunity to foster positive youth development and build healthy families and resilient communities. CYD provides services in zip codes with high incidences of juvenile crime. Communities prioritize and fund specific prevention services to address their community level needs.

- ❖ **Program Start Date:** 1995
- ❖ **Population Served:** Youth ages 6-17
- ❖ **Counties Served:** Bell, Bexar, Cameron, Dallas, El Paso, Galveston, Harris, Lubbock, McLennan, Nueces, Potter, Tarrant, Taylor, Travis, Webb, Willacy
- ❖ **Measured Outcomes:**
  - Percentage of youth not referred to juvenile probation.
  - Children remain safe during services, within 1 year, and within 3 years.
- ❖ **Program Overview:** PEI provides grants to community-based organizations to provides services in zip codes with high incidence of juvenile crime. Communities prioritize and fund specific prevention services to address their community level needs. Some of the approaches include mentoring, jobs programs, career preparation, and recreational activities.
- ❖ **Success Story:** *Good Samaritan Community Service Center (Cameron County)* Naham has been involved with the Camp Good Sam for over four years. During the 2020 summer camp, Naham shared with his fellow camp participants that he was having a hard time at home with his mother and

often struggled with feelings of loneliness. Naham stated that after sharing his story with camp staff and other campers he felt extremely supported and was eager to return each day to continue having conversations with his new friends. From then on Naham returned to his camp classes motivated to participate, even if he found the material difficult. His daily participation and leadership led other campers to participate in programming. Naham’s mother expressed to staff her surprise that Naham would return home from camp eager to share his experiences with her. She stated that participation in Camp Good Sam eventually led Naham to show more interest in school, even in his least favorite subject, math.

<b>FY2022 CYD Program Information</b>	<b>Amount</b>
Annual Budget for Grants	\$9,370,550
Total Number of Grants	17
Average Grantee Budget	\$520,586
Average Number of Youth/Families Served per Month FY21	6,514
Target Number of Youth/Families Served Annually FY22	17,135
Counties Served	16
Annual Budget for Grants	\$9,370,550

## CYD Providers

Provider	Grantee or Subgrantee	Organization Name	County Served	Website / Email Contact	Phone Contact
<b>Good Samaritan Center of San Antonio dba Good Samaritan</b>	Grantee	Good Samaritan	Cameron	goodsamtx.org	512-462-2181
<b>BCFS Health and Human Services</b>	Grantee	BCFS Health and Human Services	Taylor	www.discoverbcfs.net	325-692-0033
<b>Boys and Girls Club of Central Texas, Inc.</b>	Grantee	Boys and Girls Club of Central Texas, Inc.	Bell	www.bgctx.org/	254-699-5808
<b>City of Austin</b>	Grantee	City of Austin	Travis	austintexas.gov/department/health	512-972-6217
	Subgrantee	Del Valle Healthy Adolescent Project	Travis	www.austintexas.gov/department/austin-healthy-adolescent-aha-program	512-972-5087
	Subgrantee	E4 Youth	Travis	www.e4youth.org	970-371-9227
	Subgrantee	Mexic-Arte Museum	Travis	www.mexic-artemuseum.org	512-200-7268
	Subgrantee	Workers Assistance Program - Austin	Travis	www.youthadvocacy.org	512-799-1025
<b>City of Corpus Christi</b>	Grantee	City of Corpus Christi	Nueces	www.cctexas.com/parks	361-826-4028
	Subgrantee	Boys & Girls Club of Corpus Christi	Nueces	www.bgccb.org	361-853-2505
	Subgrantee	Communities in Schools - Corpus Christi	Nueces	www.ciscoastalbend.org	361-696-4030 ext.1
	Subgrantee	YWCA of Corpus Christi	Nueces	www.ywcacc.org	361-857-5661 ext.103
<b>Communities in Schools of the Heart of Texas</b>	Grantee	Communities in Schools of the Heart of Texas	McLennan	www.cishot.org	254-753-6002
<b>El Paso Human Services, Inc.</b>	Grantee	El Paso Human Services, Inc.	El Paso	www.elpasohumanservices.org	915-534-7227
	Subgrantee	Paso Del Norte Center of Hope	El Paso	www.pdncoh.org	915-307-2175
	Subgrantee	Project Vida	El Paso	www.pvida.net/	915-533-7057 ext.208
	Subgrantee	Transmountain Softball League Charitable Trust	El Paso	robertgauna08@gmail.com	915-821-0013
	Subgrantee	YWCA of El Paso	El Paso	ywcaelpaso.org	915-533-7921
<b>Girl Scouts of Northeast Texas</b>	Grantee	Girl Scouts of Northeast Texas	Dallas	www.gsnetx.org	972-349-2400
	Subgrantee	Dallas Prestige Group	Dallas	www.dallasprestigegroup.com	972-591-3799

<b>Provider</b>	<b>Grantee or Subgrantee</b>	<b>Organization Name</b>	<b>County Served</b>	<b>Website / Email Contact</b>	<b>Phone Contact</b>
<b>Harris County Resources for Children and Adults</b>	Grantee	Harris County Resources for Children and Adults	Harris	resources.harriscountytexas.gov/	713-295-2500; 713-394-4000
	Subgrantee	Alliance for Multicultural Community Services	Harris	thealliancetx.org djoost@thealliancetx.org	712-776-4700 ext.110
	Subgrantee	Communities in Schools - Southeast	Harris	cistxjv.org dmones@cistxjv.org	979-256-4432
	Subgrantee	Connaster & Niksch Consulting, LLC	Harris	dkniksch@gmail.com; jenconnatser@gmail.com	713-449-6151
	Subgrantee	Equip 24/7	Harris	teamfirststandgoal.org tsmith@teamfirststandgoal.org	713-571-9121
	Subgrantee	Partnership for the Advancement & Immersion of Refugees (PAIR)	Harris	www.pairhouston.org	713-771-111
	Subgrantee	Pasadena Community Resource Center	Harris	pasadenacommunityresourcecenter.org	281-740-0290
<b>Rio Grande Valley Empowerment Zone Corporation</b>	Grantee	Rio Grande Valley Empowerment Zone Corporation	Willacy	www.rgvez.org	956-424-3276
	Subgrantee	Lyford Consolidated Independent School District	Willacy	lyfordcisd.net	956-347-3910
	Subgrantee	Raymondville Independent School District	Willacy	raymondvilleisd.org	956-689-8181
<b>Southwest Keys Programs, Inc.</b>	Grantee	Southwest Keys Programs, Inc.	Bexar	www.southwestkey.org	512-462-2181
<b>Southwest Keys Programs, Inc.</b>	Grantee	Southwest Keys Programs, Inc.	Webb	www.southwestkey.org	956-424-3276

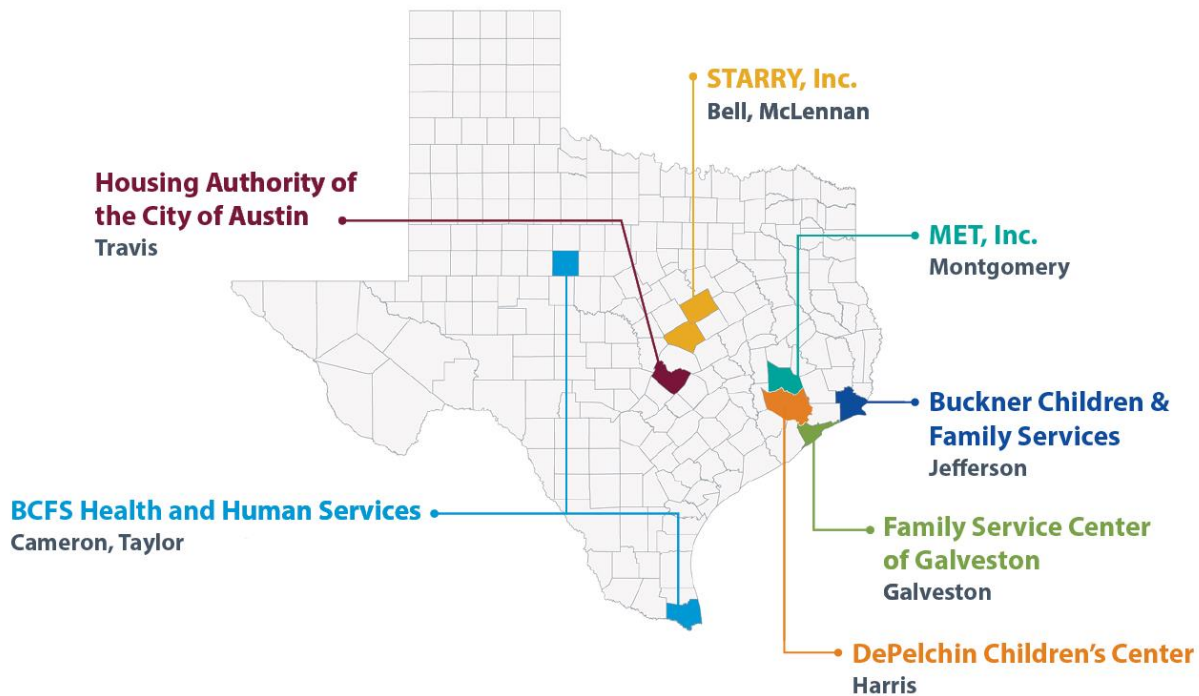
<b>Provider</b>	<b>Grantee or Subgrantee</b>	<b>Organization Name</b>	<b>County Served</b>	<b>Website / Email Contact</b>	<b>Phone Contact</b>
<b>Tarrant County</b>	Grantee	Tarrant County	Tarrant	health.tarrantcounty.com	817-740-4340
	Subgrantee	Big Brothers Big Sisters - Lone Star	Tarrant	www.bbbstx.org	972-573-2427
	Subgrantee	Boys & Girls Clubs of Greater Tarrant County	Tarrant	www.bgcgctc.org	817-720-9371
	Subgrantee	Camp Fire First Texas	Tarrant	www.campfirefw.org	817-831-2111
	Subgrantee	Girls Inc of Tarrant County	Tarrant	www.girlsinctarrant.org	817-259-1050
	Subgrantee	MHMR of Tarrant County	Tarrant	www.mhmrtarrant.org	682-287-5100
	Subgrantee	Northside Inter-Community Agency - Fort Worth	Tarrant	nicaagency.org nicacyd@nicaagency.org	817-626-1102
<b>The Children's Center, Inc.</b>	Grantee	The Children's Center, Inc.	Galveston	www.thechildrenscenterinc.org	409-765-5212
	Subgrantee	Artist Boat	Galveston	www.artistboat.org; kklay@artistboat.org	409-632-0388
	Subgrantee	Galveston Independent School District	Galveston	www.gisd.org/central	832-785-8591 409-739-5369
	Subgrantee	Iconoclast Artists	Galveston	www.iconoclastartists.org	713-528-0527
	Subgrantee	Sea Star Base	Galveston	www.ssbgalveston.org; mleblanc@ssbgalveston.org	409-572-2560 ext.135
<b>The University of North Texas at Dallas</b>	Grantee	The University of North Texas at Dallas	Dallas	www.risingblazers.org	972-338-1345
	Subgrantee	Big Brothers Big Sisters - Lone Star	Dallas	bbbstx.org/greater-dallas/	888-887-2447
	Subgrantee	Boys & Girls Clubs of Greater Dallas	Dallas	bgcdallas.org	241-821-2950
	Subgrantee	Carter's House	Dallas	cartershouse.org	972-815-5004
	Subgrantee	For Oak Cliff	Dallas	foroakcliff.org	214-730-0081
	Subgrantee	Marc Cuban Heroes Basketball Center Initiative	Dallas	markcubanheroescenter.org	214-379-7451



<b>Provider</b>	<b>Grantee or Subgrantee</b>	<b>Organization Name</b>	<b>County Served</b>	<b>Website / Email Contact</b>	<b>Phone Contact</b>
	Subgrantee	Puede Network	Dallas	puedenetwork.com	214-901-0940
	Subgrantee	YMCA of Metropolitan Dallas	Dallas	ymcadallas.org	469-569-7620
	Subgrantee	Youth Revive	Dallas	youthrevive.org adrianm@youthrevive.org	214-414-9499
<b>United Way, Inc., dba United Way of Amarillo and Canyon</b>	Grantee	United Way of Amarillo and Canyon	Potter	www.unitedwayama.org/	806-376-6359; 806-468-8734
	Subgrantee	Amarillo Community College	Potter	www.actx.edu	806-371-2906
	Subgrantee	Family Support Services of Amarillo	Potter	www.fss-ama.org	806-342-2530
<b>Young Women's Christian Association of Lubbock, Texas Inc.</b>	Grantee	Young Women's Christian Association of Lubbock, Texas Inc.	Lubbock	www.ywcalubbock.org	806-993-9922



# Fatherhood EFFECT: Educating Fathers for Empowering Children Tomorrow



## Fatherhood EFFECT: Overview

Fatherhood EFFECT programs provide parent education and resources to fathers. Beginning in FY20, Fatherhood EFFECT's scope expanded to include collaboration with community coalitions, encouraging organizational adjustments to increase the quality of supports targeted specifically at fathers and pivoting to explicitly include and support fathers across multiple programs in an organization or community.

- ❖ **Program Start Date:** 2013
- ❖ **Population Served:** Fathers and father-figures to at least one child age 0-17
- ❖ **Counties Served:** Bell, Cameron, Galveston, Harris, Jefferson, McLennan, Montgomery, Taylor, Travis
- ❖ **Measured Outcomes:**
  - Children remain safe during services, within 1 year, and within 3 years
  - Increase in protective factors such as: family functioning and resiliency, social supports and nurturing/attachment
- ❖ **Program Overview:** Services offered include parent education (group/individual) and local systems building efforts to support fathers.
- ❖ **Success Story:** *DePelchin Childrens Center, Harris County.* For Jeff, becoming a new father and navigating relationship issues with his son's mother was extremely challenging. Jeff got involved with the 24/7 Dad® class just as he was on the verge of giving up on co-parenting. Attending the class provided Jeff the opportunity to connect with other fathers, listen to their testimonies, and learn so

much about himself.

“After completing the group, I feel equipped with knowledge and skills that have helped improve the relationship between my son’s mother and me. We aren’t the best of friends, but we get along better, compromise, and do what’s best for our son. It’s because of the 24/7 Dad® class and the awesome leaders of the Fatherhood program that I have a healthier relationship,” said Jeff.

<b>FY2022 Fatherhood Program Information</b>	<b>Amount</b>
Annual Budget for Grants	1,302,924
Total Number of Grants	7
Average Grantee Budget	186,132
Average Number of Youth/Families Served per Month FY21	154
Target Number of Youth/Families Served Annually FY22	1,004
Counties Served	9

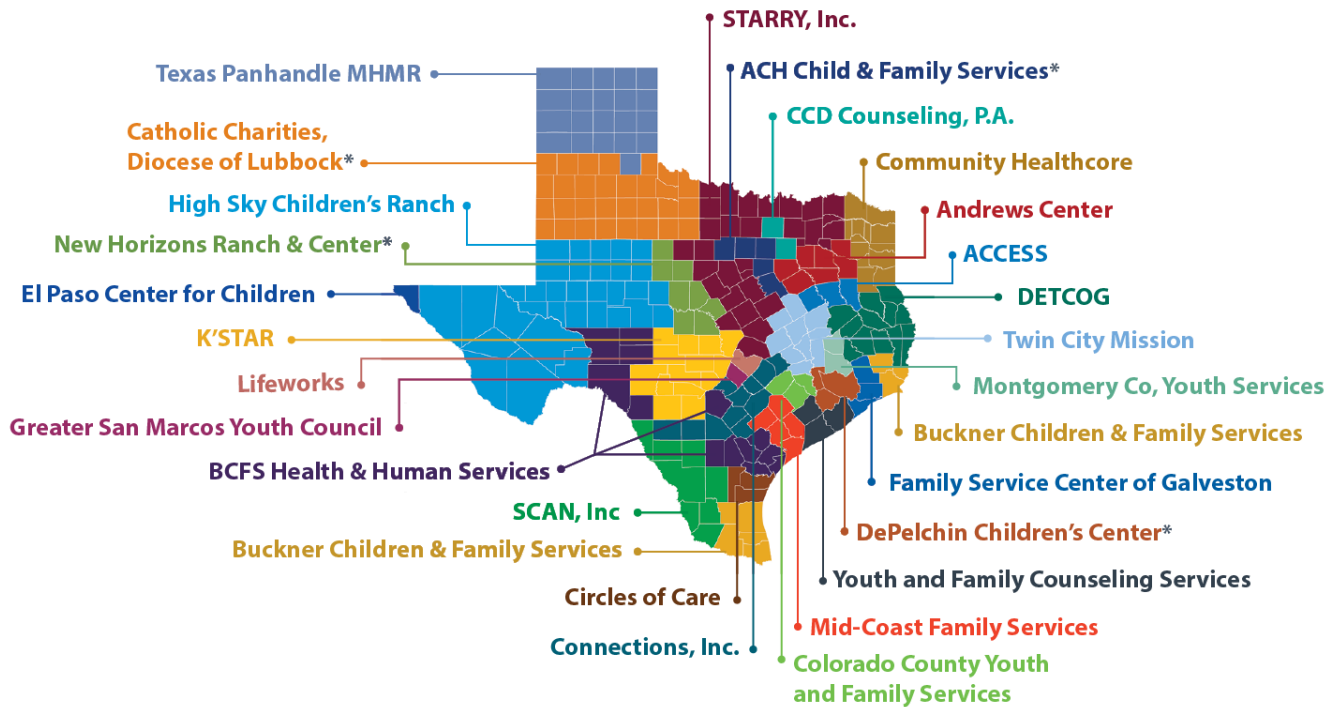
## Fatherhood EFFECT Providers

Provider	Grantee or Subgrantee	Organization Name	County Served	Website / Email Contact	Phone Contact
<b>BCFS Health and Human Services</b>	Grantee	BCFS Health and Human Services	Cameron, Taylor	<a href="http://www.discoverbcfs.net">www.discoverbcfs.net</a>	903-526-0882
<b>Buckner Children and Family Services, Inc.</b>	Grantee	Buckner Children and Family Services, Inc.	Jefferson	<a href="http://www.buckner.org">www.buckner.org</a>	800-442-4800
<b>DePelchin Children's Center</b>	Grantee	DePelchin Children's Center	Harris	<a href="http://www.depelchin.org">www.depelchin.org</a>	713-730-2335
<b>Family Service Center of Galveston County, Texas</b>	Grantee	Family Service Center of Galveston County, Texas	Galveston	<a href="http://www.fsc-galveston.org">www.fsc-galveston.org</a>	409-762-8636
<b>Housing Authority of the City of Austin</b>	Grantee	Housing Authority of the City of Austin	Travis	<a href="http://www.hacanet.org/events/i-dads-">www.hacanet.org/events/i-dads-</a>	512-477-4488
<b>Motivation Education &amp; Training, Inc.</b>	Grantee	MET, Inc.	Montgomery	<a href="http://www.metinc.org">www.metinc.org</a>	832-993-7202
<b>STARRY, INC.</b>	Grantee	STARRY, INC.	McLennan, Bell	<a href="http://www.starry.org">www.starry.org</a>	254-244-2400

# FAYS: Family and Youth Success

\* denotes Texas Kinship Navigator Program grantees.

\* Texas Kinship Navigator Program Grantees



## FAYS Overview

The FAYS program addresses family conflict and everyday struggles while promoting strong families and youth resilience. Every FAYS provider offers one-on-one coaching or counseling with a trained professional and group-based learning for youth and parents. FAYS programs also operate a 24-hour hotline for families having urgent needs.

- ❖ **Program Start Date:** 2014 (in current form)
- ❖ **Population Served:** Families with youth under 18 years old who are dealing with family conflict or everyday struggles. In some areas of the state FAYS only provides services to families with children 6-17 years of age.
- ❖ **Counties Served:** All Counties in Texas.
- ❖ **Measured Outcomes:**
  - Children remain safe during services, within 1 year, and within 3 years.
  - Percentage of youth not referred to juvenile probation.
  - Increase in protective factors such as: family functioning and resiliency, social supports, and nurturing/attachment.
- ❖ **Program Overview:** Every FAYS provider offers one-on-one coaching or counseling with a trained professional as well as family coaching or counseling. FAYS providers also offer group-based learning for youth and parents and each provider operates a 24-hour hotline for families having urgent needs.

- ❖ **\*Texas Kinship Navigator Program:** In May 2019, PEI released a funding opportunity specifically for FAYS grantees to successfully expand services to kinship caregivers throughout the state, in compliance with the requirements and guidelines of the [Family First Prevention Services Act](#). PEI funded four grantees serving rural and urban areas; grantees with strong connections to foster care and Community-Based Care; grantees with a variety of organizational structures; and variety of experiences working with kinship families.
  
- ❖ **Success Story:** *Buckner International (Rio Grande Valley)*. Jay, a 16-year-old high school student, was referred to FAYS by his high school guidance counselor. The family and Jay expressed having issues communicating with one another, specifically on issues regarding Jay’s school attendance and academic performance. Jay expressed to his FAYS case manager that his self-esteem was at an all-time low and he feared he was going nowhere in life. Their case manager utilized the “It’s All About Being a Teen” handbook to discuss and work through a variety of topics with Jay, including but not limited to anger management, communication, problem solving, and healthy decision making. Additionally, the case manager worked with the entire family to develop stronger communication skills. After three months of participating in the FAYS program Jay began to attend school on a regular basis as well as completing his assignments. Jay and his family began communicating more openly about his goals for the future and increased their connection as well as overall happiness with one another. In May, Jay graduated from high school with the rest of his classmates, a milestone he expressed being very proud of. He is now working at a local restaurant while taking virtual welding classes at Texas State Technical College.

FY2022 FAYS Program Information	Amount
Annual Budget for Grants	24,821,446
Total Number of Grants	28
Average Grantee Budget	365,000
Average Number of Youth/Families Served per Month FY21	5,556
Target Number of Youth/Families Served Annually FY22	21,048
Counties Served	254
Annual Budget for Grants	24,821,446

## FAYS Providers

Provider	Grantee or Subgrantee	Organization Name	County Served	Website / Email Contact	Phone Contact
<b>ACH Child and Family Services</b>	Grantee	ACH Child and Family Services	Hill, Johnson, Palo Pinto, Parker, Tarrant	<a href="http://www.ACHservices.org">www.ACHservices.org</a>	817-335-4673; 888-296-8099
<b>Anderson Cherokee Community Enrichment Services (dba ACCESS)</b>	Grantee	ACCESS	Anderson, Cherokee	<a href="http://www.access-center.org">www.access-center.org</a>	903-586-3175
	Subgrantee	Kaufman County Shelter	Kaufman	<a href="http://norvillecenter.org">norvillecenter.org</a>	469-376-4510
<b>Anderson Cherokee Community Enrichment Services (dba ACCESS)</b>	Grantee	ACCESS	Freestone	<a href="http://www.access-center.org">www.access-center.org</a>	877-811-1289
<b>Andrews Center</b>	Grantee	Andrews Center	Ellis, Henderson, Kaufman, Navarro, Smith, Van Zandt, Wood	<a href="http://www.andrewscenter.com">www.andrewscenter.com</a>	903-597-1351; 903-581-2835
<b>BCFS Health and Human Services</b>	Grantee	BCFS Health and Human Services	Bexar, Goliad, Kinney	<a href="http://discoverbcfs.net/FAYS">discoverbcfs.net/FAYS</a>	210-283-5183 (San Antonio);
<b>BCFS Health and Human Services</b>	Grantee	BCFS Health and Human Services	Crockett, Schleicher, Sutton	<a href="http://discoverbcfs.net/FAYS">discoverbcfs.net/FAYS</a>	830-768-2755
<b>Buckner Children and Family Services, Inc.</b>	Grantee	Buckner Children and Family Services, Inc.	Hardin, Jefferson, Orange	<a href="http://www.buckner.org">www.buckner.org</a>	409-861-0582
<b>Buckner Children and Family Services, Inc.</b>	Grantee	Buckner Children and Family Services, Inc.	Brooks, Cameron, Hidalgo, Kenedy, Willacy	<a href="http://www.buckner.org">www.buckner.org</a>	956-630-6285
<b>Catholic Charities, Diocese of Lubbock, Inc.</b>	Grantee	Catholic Charities, Diocese of Lubbock, Inc.	Bailey, Baylor, Briscoe, Castro, Childress, Cochran, Cottle, Crosby, Dickens, Floyd, Foard, Garza, Hale, Hardeman, Haskell, Hockley, Kent, King, Knox, Lamb, Lubbock, Lynn, Motley, Parmer, Stonewall, Swisher, Terry, Throckmorton, Wilbarger, Yoakum	<a href="https://cclubbock.org/youth-and-families">https://cclubbock.org/youth-and-families</a>	806-765-8475
<b>CCD Counseling, P.A.</b>	Grantee	CCD Counseling, P.A.	Dallas, Denton	<a href="http://www.familytreeprogram.org">www.familytreeprogram.org</a>	888-837-0666 Ext. 2

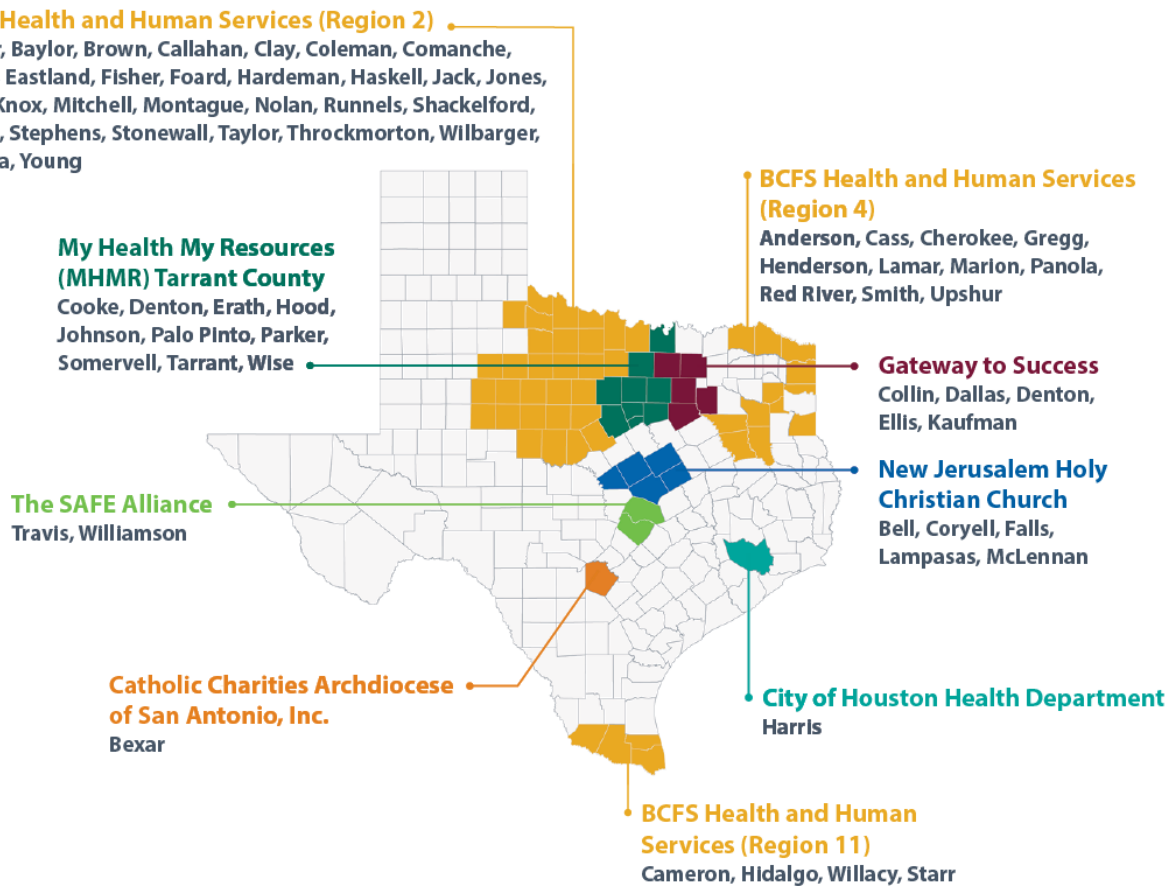
<b>Provider</b>	<b>Grantee or Subgrantee</b>	<b>Organization Name</b>	<b>County Served</b>	<b>Website / Email Contact</b>	<b>Phone Contact</b>
<b>Circles of Care</b>	Grantee	Circles of Care	Nueces, Kleberg and Jim Wells	www.circlesofcareinc.org	361-852-3812
<b>Colorado County Youth and Family Services, Inc.</b>	Grantee	Colorado County Youth and Family Services, Inc.	Austin, Colorado, Fayette	www.ccyfs.org	979-732-8355
<b>Connections Individual and Family Services, Inc.</b>	Grantee	Connections Individual and Family Services, Inc.	Bastrop, Caldwell, Comal, Guadalupe, Lee, Wilson, Karnes, Atascosa, Frio, Zavala, Gonzales, Caldwell, Bastrop, and Lee	www.connectionsifs.org	830-629-6571 Ext. 232
<b>Deep East Texas Council of Governments</b>	Grantee	DETCOG	Angelina, Houston, Jasper, Nacogdoches, Newton, Polk, Sabine, San Augustine, San Jacinto, Shelby, Trinity, Tyler	www.detcog.gov	936-634-2247; 800-256-6848
<b>DePelchin Children's Center</b>	Grantee	DePelchin Children's Center	Ft. Bend, Harris, Waller	www.depelchin.org	713-730-2335
<b>El Paso Center for Children, Inc.</b>	Grantee	El Paso Center for Children, Inc.	El Paso	www.epccinc.org	915-565-5021
<b>Family Service Center of Galveston County, Texas</b>	Grantee	Family Service Center of Galveston County, Texas	Chambers, Galveston, Liberty	www.fsc-galveston.org	409-762-8636; 281-576-6366; 409-938-4814
<b>Greater San Marcos Youth Council</b>	Grantee	Greater San Marcos Youth Council	Hays	www.gsmyc.org	512-754-0500; 800-457-0797
<b>High Sky Children's Ranch, Inc.</b>	Grantee	High Sky Children's Ranch, Inc.	Andrews, Borden, Brewster, Coke, Concho, Crane, Crockett, Culberson, Dawson, Ector, Fisher, Gaines, Glasscock, Howard, Hudspeth, Irion, Jeff Davis, Kimble, Loving, Martin, Mason, McCulloch, Menard, Midland, Mitchell, Nolan, Pecos, Presidio, Reagan, Reeves, Runnels, Schleicher, Scurry, Sterling, Sutton, Terrell, Tom Green, Upton, Ward, Winkler	staytogetherprogram.org; Highsky.org	432-699-1466
<b>K'STAR, Inc.</b>	Grantee	K'STAR, Inc.	Bandera, Blanco, Burnet, Edwards, Gillespie, Kendall, Kerr, Kimble, Llano, Mason, Medina, Menard, Real, Uvalde	www.kstar.org	830-896-5404

<b>Provider</b>	<b>Grantee or Subgrantee</b>	<b>Organization Name</b>	<b>County Served</b>	<b>Website / Email Contact</b>	<b>Phone Contact</b>
<b>Mid-Coast Family Services, Inc.</b>	Grantee	Mid-Coast Family Services, Inc.	Calhoun, DeWitt, Jackson, Lavaca, Victoria	Midcoastfamily.org	361-575-7842
<b>Montgomery County Youth Services, Inc.</b>	Grantee	Montgomery County Youth Services, Inc.	Montgomery, Walker	www.sayyestoyouth.org	936-756-8682; 888-756-8682
<b>New Horizons Ranch and Center, Inc. (Family First)</b>	Grantee	Family First	Brown, Callahan, Coleman, Jones, McCulloch, Mills, San Saba, Taylor	www.newhorizonsinc.com; www.nh-families.org	325-437-1852
<b>Sabine Valley Regional MHMR Center</b>	Grantee	Community Healthcore	Bowie, Camp, Cass, Franklin, Gregg, Harrison, Marion, Morris, Panola, Red River, Rusk, Titus, Upshur	www.communityhealthcore.com	(903) 758-2471; (866) 782-7031; (800) 832-1009
<b>Serving Children and Adults in Need, Inc.</b>	Grantee	Serving Children and Adults in Need, Inc.	Dimmit, Duval, Jim Hogg, La Salle, Maverick, Starr, Webb, Zapata	www.scan-inc.org	956-724-3177
<b>STARRY, INC.</b>	Grantee	STARRY, INC.	Archer, Bell, Bosque, Clay, Collin, Comanche, Cooke, Coryell, Eastland, Erath, Fannin, Grayson, Hamilton, Hood, Hopkins, Hunt, Jack, Lamar, Lampasas, McLennan, Montague, Rains, Shackelford, Somervell, Stephens, Wichita, Williamson, Wise, Young	www.starry.org	512-388-8290
<b>Texas Panhandle Mental Health/Mental Retardation</b>	Grantee	Texas Panhandle Mental Health/Mental Retardation	Armstrong, Carson, Collingsworth, Dallam, Deaf Smith, Donley, Gray, Hall, Hemphill, Hutchinson, Lipscomb, Moore, Ochiltree, Oldham, Potter, Randall, Roberts, Sherman, Hansford, Hartley, Wheeler	texaspanhandlecenters.org	806-337-1000; 806-354-2191
	Subgrantee	Texas Panhandle Centers Behavioral and Developmental Health		texaspanhandlecenters.org	806-358-1681



<b>Provider</b>	<b>Grantee or Subgrantee</b>	<b>Organization Name</b>	<b>County Served</b>	<b>Website / Email Contact</b>	<b>Phone Contact</b>
<b>Twin City Mission</b>	Grantee	Twin City Mission	Brazos, Burleson, Falls, Grimes, Leon, Limestone, Madison, Milam, Robertson, Washington	www.twincitymission.org	979-260-7336; 800-865-9921
<b>Youth and Family Alliance (dba Lifeworks)</b>	Grantee	Lifeworks	Travis	www.lifeworksaustin.org	512-735-2400
<b>Youth and Family Counseling Services</b>	Grantee	Youth and Family Counseling Services	Brazoria, Matagorda, Wharton	www.yfcs.org	979-849-7751
	Subgrantee	YFCS-Angleton	Brazoria	www.yfcs.org	979-849-7751

# HIP: Helping through Intervention and Prevention (through August 2022)



## HIP Overview

HIP provides voluntary, in-home parent education using evidence-based or promising practice programs and other support services, including basic needs support, to expecting parents or families with young children 0 to 2 years of age. The programs are effective in increasing protective factors for specialized families involved with the child welfare system, including current and former pregnant or parenting foster youth. The programs are designed to support healthy, nurturing, and safe homes for children and ultimately promote positive outcomes for children and families.

- ❖ **Program Start Date:** 2014
- ❖ **Population Served:** Services to former and current youth in foster care who are pregnant, who have recently given birth, or are parenting a child up to two (2) years old. This includes teen fathers who are currently or previously in foster care and other families involved with the child welfare system.
- ❖ **Counties Served:** Anderson, Archer, Baylor, Bell, Bexar, Bowie, Brown, Callahan, Cameron, Cass, Cherokee, Clay, Coleman, Collin, Comanche, Cooke, Coryell, Cottle, Dallas, Denton, Eastland, Ellis, Erath, Falls, Fisher, Foard, Gregg, Hardeman, Harris, Haskell, Henderson, Hidalgo, Hood, Jack, Johnson, Jones, Kaufman, Kent, Knox, Lamar, Lampasas, Marion, McLennan, Mitchell, Montague, Nolan, Palo Pinto, Panola, Parker, Red River, Runnels, Scurry, Shackelford, Smith, Somervell, Starr, Stephens, Stonewall, Tarrant, Taylor, Throckmorton, Travis, Upshur, Wichita, Wilbarger, Willacy, Williamson, Wise, Young

❖ **Measured Outcomes:**

- Children remain safe during services, within 1 year, and within 3 years'
- Increase in protective factors such as: family functioning and resiliency; social supports and nurturing/attachment

❖ **Program Overview:** Services offered include home-based assessments, home visiting program that provides evidence-based parent education, and basic needs support.

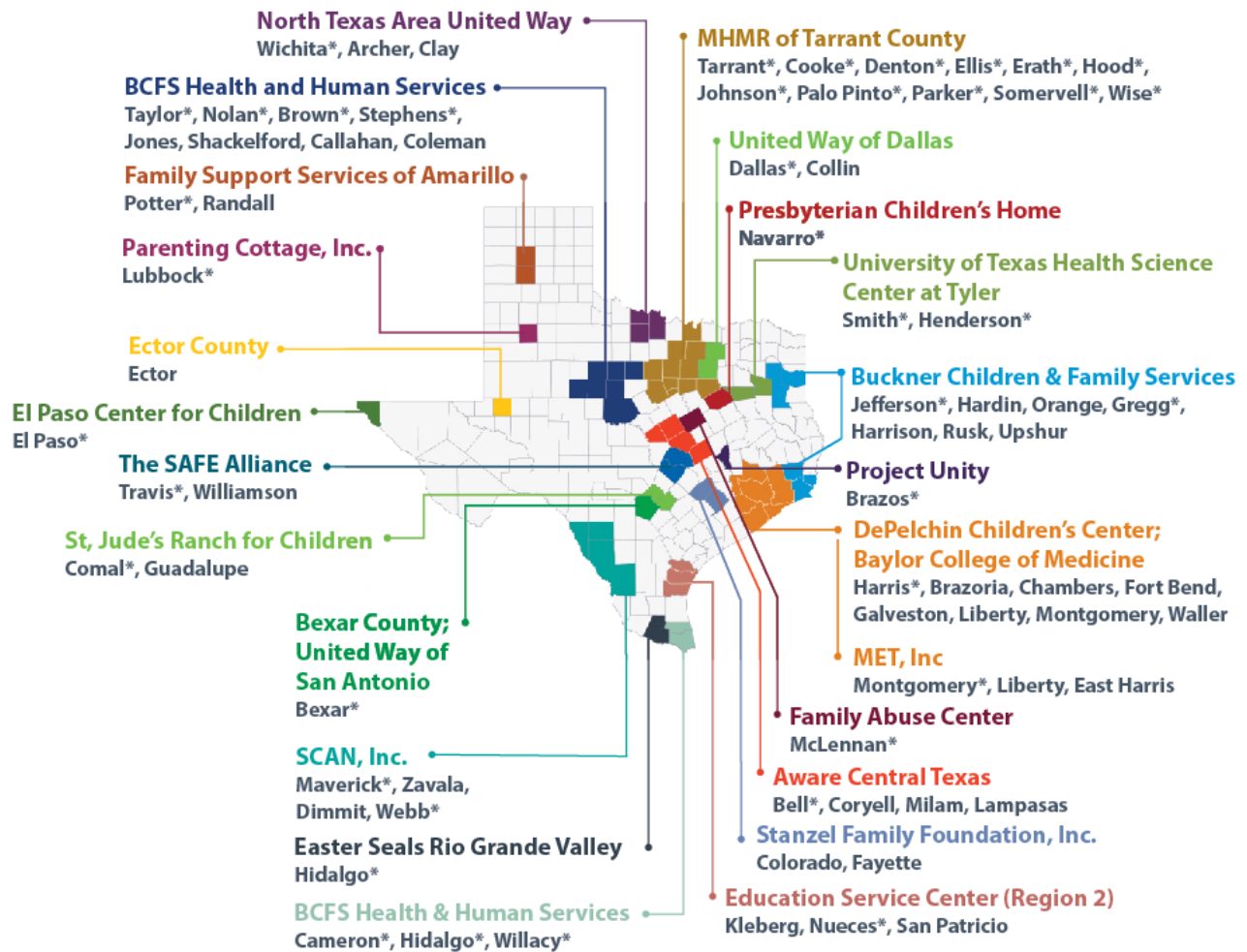
❖ **Success Story:** *BCFS Health and Human Services, Gregg County.* Meg, a 20-year-old former foster youth, was referred to the HIP program by Child Protective Services in February 2020. A few months prior, Meg gave birth to her son prematurely when she was only 27 weeks pregnant. At the beginning of HIP services Meg struggled to keep appointments with her family educator due to her son's multiple medical appointments. However, once her son was home from the hospital, Meg became determined to engage in the HIP program to assist her to be the best mother to her child. Her family educator indicated that Meg was extremely positive as they worked through the curricula and never let any challenges hinder her from success. Despite her early struggles, after months of diligent work, Meg graduated the HIP program which she stated was "important and very helpful" in her parenting journey.

FY2022 HIP Program Information	Amount
Annual Budget for Grants	1,204,066
Total Number of Grants	9
Average Grantee Budget	133,785
Average Number of Youth/Families Served per Month FY21	167
Target Number of Youth/Families Served Annually FY22	405
Counties Served	75

## HIP Providers

Provider	Grantee or Subgrantee	Organization Name	County Served	Website / Email Contact	Phone Contact
<b>BCFS Health and Human Services</b>	Grantee	BCFS Health and Human Services	Primary: Cameron, Hidalgo Secondary: Willacy, Starr	<a href="http://www.discoverbcfs.net/HIP/Discoverbcfs.net/Harlingen">www.discoverbcfs.net/HIP/Discoverbcfs.net/Harlingen</a>	956-230-3849
<b>BCFS Health and Human Services</b>	Grantee	BCFS Health and Human Services	Primary: Anderson, Bowie, Smith, Gregg, Henderson, Cass, Marion, Cherokee Secondary: Lamar, Upshur, Panola, Red River	<a href="https://discoverbcfs.net">https://discoverbcfs.net</a>	903-526-0882
<b>BCFS Health and Human Services</b>	Grantee	BCFS Health and Human Services	Archer, Baylor, Brown, Callahan, Clay, Coleman, Comanche, Cottle, Eastland, Fisher, Foard, Hardeman, Haskell, Jack, Jones, Kent, Knox, Mitchell, Montague, Nolan, Runnels, Scurry, Shackelford, Stephens, Stonewall, Taylor, Throckmorton, Wichita, Wilbarger, Young	<a href="http://www.discoverbcfs.net/ablene">www.discoverbcfs.net/ablene</a>	325-692-0033
<b>Catholic Charities Archdiocese of San Antonio, Inc.</b>	Grantee	Catholic Charities Archdiocese of San Antonio, Inc.	Bexar	<a href="https://ccaosa.org/">https://ccaosa.org/</a>	210-222-1294
<b>City of Houston Health Department</b>	Grantee	City of Houston Health Department	Harris	<a href="http://www.houstontx.gov/health">http://www.houstontx.gov/health</a>	832-393-5169
<b>Gateway to Success</b>	Grantee	Gateway to Success	Primary: Dallas Secondary: Collin, Denton, Ellis, Kaufman	<a href="http://gatewaytosuccessinc.wixsite.com/gts-2013">gatewaytosuccessinc.wixsite.com/gts-2013</a>	972-897-7044
<b>MHMR of Tarrant County</b>	Grantee	MHMR of Tarrant County	Primary: Tarrant Secondary: Cooke, Denton, Erath, Hood, Johnson, Palo Pinto, Parker, Somervell, Wise	<a href="http://www.mhmrtc.org/">www.mhmrtc.org/</a> ; <a href="http://www.earlyisbestnorthtexas.org/">www.earlyisbestnorthtexas.org/</a>	800-866-4265
<b>New Jerusalem Holy Christian Church Outreach Ministries</b>	Grantee	New Jerusalem Holy Christian Church Outreach Ministries	Primary: Bell, McLennan Secondary: Falls, Lampasas, Coryell	<a href="http://www.njhccoutreachministries.com/">www.njhccoutreachministries.com/</a>	254-432-9763
<b>The SAFE Alliance</b>	Grantee	The SAFE Alliance	Primary: Travis Secondary: Williamson	<a href="http://www.safeaustin.org">www.safeaustin.org</a>	512-267-7233

# HOPES: Healthy Outcomes through Prevention and Early Support



## HOPES Overview

Project HOPES is a flexible community grant that funds a wide variety of innovative initiatives and supports for families with children 5 years old and younger. HOPES grants also include local collaborations with health care, faith-based organizations, child welfare, early childhood education, and other child and family services in the community.

- ❖ **Program Start Date:** 2014
- ❖ **Population Served:** Families with children ages 0-5 years old who are considered at risk for abuse and neglect.
- ❖ **Counties Served:** Archer, Bell, Bexar, Brazoria, Brazos, Brown, Cameron, Chambers, Clay, Coleman, Collin, Colorado, Comal, Cooke, Coryell, Dallas, Denton, Dimmit, El Paso, Ellis, Erath, Fayette, Fayette Travis, Fort Bend, Galveston, Gregg, Guadalupe, Hardin, Harris, Harris Brazoria, Harris Tarrant, Harrison, Henderson, Hood, Jefferson, Johnson, Jones, Kleberg, Lampasas, Liberty, Lubbock, Maverick, McLennan, Milam, Montgomery, Navarro, Nolan, Nueces, Orange, Palo Pinto, Parker, Potter, Randall, Rusk, San Patricio, Shackelford, Smith, Somervell, Stephens Callahan, Taylor, Upshur, Waller, Waller Hidalgo, Webb, Wichita, Williamson, Wise, Zavala

❖ **Measured Outcomes:**

- Children remain safe during services, within 1 year, and within 3 years.
- Increase in protective factors such as: family functioning and resiliency, social supports, and nurturing/attachment.

❖ **Program Overview:** Program supports typically include home-visiting services as well as other supports that build protective factors such as parent support groups, maternal depression screening, early literacy promotion, case management, and other parent education.

❖ **Success Story:** *My Health, My Resources (Tarrant County)*. Tina was struggling with pandemic-related stress and challenges. She indicated to the HOPES family support coach that she had difficulty keeping her children engaged during quarantine. The coach encouraged Tina to try out various virtual groups to participate in with her children to incorporate collaborative activities in the household. Tina and her children tried out a few virtual groups and loved them so much they began incorporating them into their every-day routine. Each week, the family support coach assists Tina in putting together a schedule of groups and activities for the whole family. According to Tina, these weekly activities helped the family connect more often as well as brought them closer together.

FY2022 HOPES Program Information	Amount
Annual Budget for Grants	25,394,886
Total Number of Grants	28
Average Grantee Budget	906,960
Average Number of Youth/Families Served per Month FY21	2,680
Target Number of Youth/Families Served Annually FY22	8,131
Counties Served	28
Annual Budget for Grants	25,394,886

## HOPES Providers

Provider	Grantee or Subgrantee	Organization Name	County Served	Website / Email Contact	Phone Contact
<b>Aware Central Texas</b>	Grantee	Aware Central Texas	Primary: Bell Secondary: Coryell, Milam, Lampasas	<a href="http://www.awarecentraltexas.org">www.awarecentraltexas.org</a>	254-213-2986
<b>Baylor College of Medicine</b>	Grantee	Baylor College of Medicine	Primary: Harris Secondary: Galveston, Fort Bend, Brazoria, Chambers, Liberty, Montgomery, Waller	<a href="http://www.bcm.edu/departments/pediatrics/sections-divisions-centers/public-health-pediatrics">www.bcm.edu/departments/pediatrics/sections-divisions-centers/public-health-pediatrics</a>	832-824-6522
	Subgrantee	Texas Children's Hospital – Houston	Harris	<a href="http://www.texaschildrens.org">www.texaschildrens.org</a>	832-824-9322
<b>BCFS Health and Human Services</b>	Grantee	BCFS Health and Human Services	Cameron	<a href="http://Discoverbcfs.net/Harlingen/">Discoverbcfs.net/Harlingen;</a> <a href="https://discoverbcfs.net/HOPES/">https://discoverbcfs.net/HOPES/</a>	956-230-3849
<b>BCFS Health and Human Services</b>	Grantee	BCFS Health and Human Services	Primary: Brown, Nolan, Taylor, Stephens Secondary: Callahan, Coleman, Jones, Shackelford	<a href="http://www.discoverbcfs.net/abilene">www.discoverbcfs.net/abilene</a>	325-692-0033
<b>Bexar County</b>	Grantee	Bexar County	Bexar	<a href="https://www.bexar.org/">https://www.bexar.org/</a>	210-335-2011
<b>Buckner Children and Family Services, Inc.</b>	Grantee	Buckner Children and Family Services, Inc.	Primary: Jefferson Secondary: Orange, Hardin	<a href="http://www.buckner.org">www.buckner.org</a>	409-966-0976
<b>Buckner Children and Family Services, Inc.</b>	Grantee	Buckner Children and Family Services, Inc.	Primary: Gregg Secondary: Harrison, Rusk, Upshur	<a href="http://www.buckner.org">www.buckner.org</a>	903-757-9383
<b>DePelchin Children's Center</b>	Grantee	DePelchin Children's Center	Primary: Harris Secondary: Brazoria, Chambers, Fort Bend, Galveston, Liberty, Montgomery, Waller	<a href="https://www.depelchin.org/">https://www.depelchin.org/</a>	713-730-2335
	Subgrantee	Collaborative for Children - Houston	Harris	<a href="http://www.collabforchildren.org">www.collabforchildren.org</a>	713-600-1100

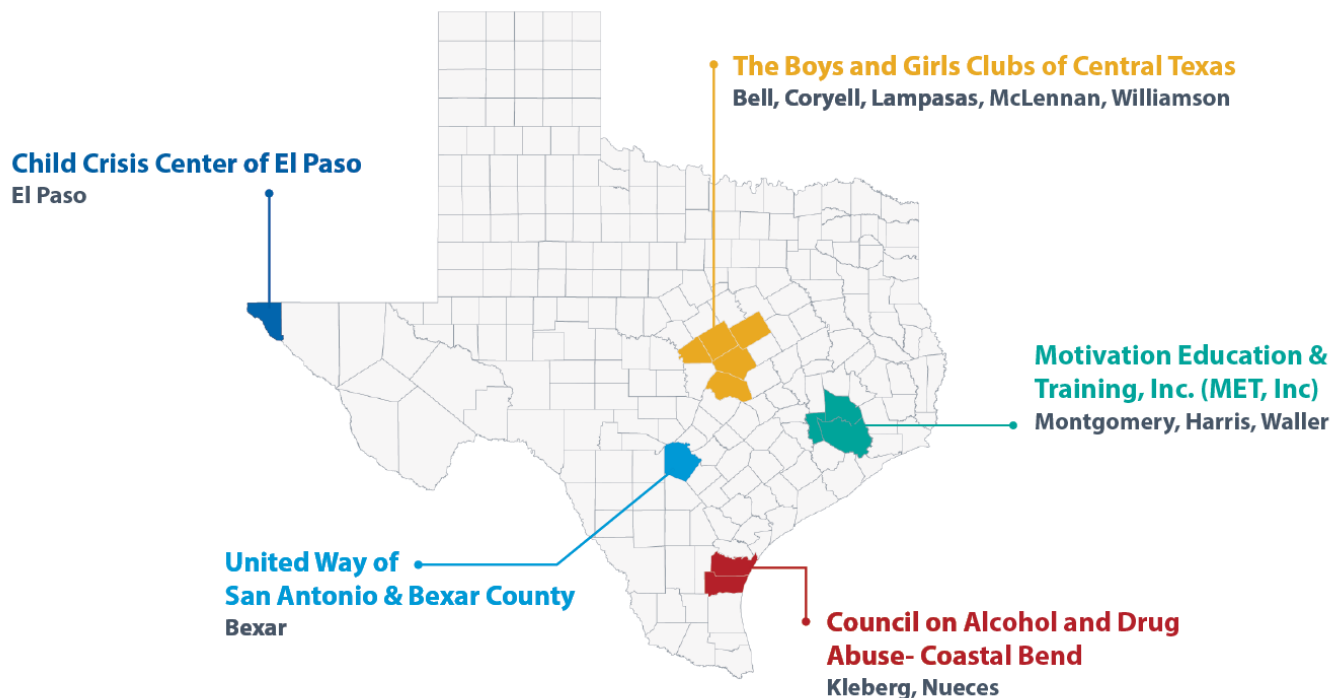
Provider	Grantee or Subgrantee	Organization Name	County Served	Website / Email Contact	Phone Contact
	Subgrantee	Harris County Protective Services for Children and Adults	Harris	resources.harriscountytx.gov	712-394-4000
<b>Easter Seals Rio Grande Valley Education Service Center Region 2</b>	Grantee	Easter Seals Rio Grande Valley Education Service Center Region 2	Hidalgo	www.easterseals-rgv.org	956-631-9171
	Grantee		Primary: Nueces Secondary: San Patricio, Kleberg	https://www.esc2.net/	361-561-8604
<b>El Paso Center for Children, Inc.</b>	Grantee	El Paso Center for Children, Inc.	El Paso	www.epccinc.org	915-565-8361
	Subgrantee	Paso Del Norte Children's Development Center - El Paso	El Paso	www.pdnchildrens.org	915-544-8484
	Subgrantee	United Way of El Paso County	El Paso	www.unitedwayelpaso.org	915-533-2434
<b>Family Abuse Center</b>	Grantee	Family Abuse Center	McLennan	www.hopeswaco.org	257-732-0482
<b>Family Support Services of Amarillo, Inc.</b>	Grantee	Family Support Services of Amarillo, Inc.	Primary: Potter, Secondary: Randall	www.fss-ama.org	806-342-2500
<b>Motivation Education &amp; Training, Inc.</b>	Grantee	MET, Inc.	Primary: Montgomery Secondary: Liberty, East Harris	www.metinc.org	281-689-5544
<b>My Health My Resources of Tarrant County</b>	Grantee	My Health My Resources of Tarrant County	Primary: Tarrant, Cooke, Denton, Ellis, Erath, Hood, Johnson, Palo Pinto, Parker, Somervell, and Wise	www.mhmrtarrant.org; www.EarlyIsBestNorthTexas.org	817-335-3022
	Subgrantee	Center for Transforming Lives	Tarrant	www.transforminglives.org	817-332-6191
<b>North Texas Area United Way, Inc.</b>	Grantee	North Texas Area United Way, Inc.	Archer, Clay, Wichita	www.ntauw.org; www.wichitacountythv.com	940-322-8638
	Subgrantee	Wichita Falls Independent School District	Wichita	<a href="http://www.wfisd.net">www.wfisd.net</a>	940-235-1000
<b>Parenting Cottage, Inc.</b>	Grantee	Parenting Cottage, Inc.	Lubbock	www.parentingcottage.org	806-795-7552
	Subgrantee	Covenant Health Systems University	Lubbock	www.covenanthealth.net	978-312-4300
	Subgrantee	Medical Center of Lubbock	Lubbock	www.utswmed.org	806-761-0710
<b>Presbyterian Children's Homes &amp; Services</b>	Grantee	Presbyterian Children's Homes & Services	Navarro	www.pchas.org	800-888-1904; 512-476-1234



<b>Provider</b>	<b>Grantee or Subgrantee</b>	<b>Organization Name</b>	<b>County Served</b>	<b>Website / Email Contact</b>	<b>Phone Contact</b>
<b>Project Unity</b>	Grantee	Project Unity	Brazos	www.projectunitytx.org	979-595-2900
<b>Serving Children and Adults in Need, Inc.</b>	Grantee	Serving Children and Adults in Need, Inc.	Webb	www.scan-inc.org	956-724-3177
<b>Serving Children and Adults in Need, Inc.</b>	Grantee	Serving Children and Adults in Need, Inc.	Primary: Maverick Secondary: Dimmit, Zavala	www.scan-inc.org	956-724-3177
<b>St. Jude's Ranch for Children - Texas Region, Inc.</b>	Grantee	St. Jude's Ranch for Children - Texas Region, Inc.	Comal, Guadalupe	https://sjrctexas.org	210-876-6763
<b>Stanzel Family Foundation, Inc.</b>	Grantee	Stanzel Family Foundation, Inc.	Fayette	www.sw-pat.org	979-743-9119
<b>Stanzel Family Foundation, Inc.</b>	Grantee	Stanzel Family Foundation, Inc.	Colorado; Fayette	www.sw-pat.org	979-743-9119
<b>The SAFE Alliance</b>	Grantee	The SAFE Alliance	Primary: Travis Secondary: Williamson	www.safeaustin.org	512-267-7233
	Subgrantee	Any Baby Can of Austin	Travis	www.anybabycan.org	512-454-3743
<b>United Way Metropolitan Dallas, Inc.</b>	Grantee	United Way Metropolitan Dallas, Inc.	Primary: Dallas Secondary: Collin	www.unitedwaydallas.org	214-978-0000
	Subgrantee	Lumin Education - Dallas	Dallas	www.lumineducation.org	214-824-8950
	Subgrantee	AVANCE of Dallas	Dallas	www.avance-ntx.org	214-887-9907
	Subgrantee	Metrocare Family Care Connection - Dallas	Dallas	www.metrocareservices.org	214-743-1200
	Subgrantee	Momentous Institute	Dallas	www.momentousinstitute.org	972-298-3366
<b>United Way of San Antonio and Bexar County</b>	Grantee	United Way of San Antonio and Bexar County	Bexar	www.unitedwaysatx.org	210-352-7000
	Subgrantee	Any Baby Can of San Antonio	Bexar	www.anybabycansa.org	210-227-0170
	Subgrantee	Catholic Charities of San Antonio	Bexar	www.ccaosa.org	210-222-1294
	Subgrantee	Center for Health Care Services	Bexar	www.chcsbc.org	210-261-1000
	Subgrantee	Family Service Association of San Antonio	Bexar	www.family-service.org	210-299-2400
	Subgrantee	Respite Care of San Antonio	Bexar	www.respitecaresa.org	210-737-1212
	Subgrantee	The Children's Shelter - San Antonio	Bexar	www.childrenshelter.org	210-212-2500
	Subgrantee	The Center for Health Care Services - SA	Bexar	www.chcsbc.org	210-261-1000

<b>Provider</b>	<b>Grantee or Subgrantee</b>	<b>Organization Name</b>	<b>County Served</b>	<b>Website / Email Contact</b>	<b>Phone Contact</b>
	Subgrantee	Depelchin Children's Center	Bexar	www.depelchin.org	210-691-3222
	Subgrantee	Martinez Street Women's Center - SA	Bexar	www.mswomenscenter.org	210-908-9772
<b>University of Texas Health Science Center at Tyler</b>	Grantee	University of Texas Health Science Center at Tyler	Henderson, Smith	www.uthct.edu	903-877-7777

## Service Members, Veterans and Families (SMVF)



### SMVF Overview

The SMVF program provides support for families of children ages 0-17 in which one or both caregivers are serving, or have served, in the armed forces, reserves, or National Guard.

- ❖ **Program Start Date:** 2014
- ❖ **Population Served:** Military families with children ages 0-17 in which one or both parents are serving, or have served, in the armed forces, reserves, or National Guard.
- ❖ **Counties Served:** Bell, Bexar, Coryell, El Paso, Harris, Kleberg, Lampasas, McLennan, Montgomery, Nueces, Waller, Williamson
- ❖ **Measured Outcomes:**
  - Children remain safe during services, within 1 year, and within 3 years.
  - Increase in protective factors such as: family functioning and resiliency, social supports, and nurturing/attachment.
- ❖ **Program Overview:** Through supports such as parenting, education, counseling, and youth development programming, this program is designed to:
  - Build on the strengths of both caregivers and children to promote strong families; Partners with military and veteran caregivers to support positive parental involvement in their children's lives;
  - Partner with military and veteran caregivers to maximize their ability to give their children emotional, physical and financial support; and
  - Build community coalitions focused on promoting positive outcomes for children, youth and families.

❖ **Success Story:** *Strong Families Strong Forces/Boys and Girls Club of Central Texas – (Bell County.)* The Stephens family entered the program after the father, who is a service member, reported that after several combat deployments he struggled to connect with his spouse and engage with his two children. His spouse reported to the case managers that she noticed differences in his behavior such as irritability, being easily startled and withdrawing from social interaction. The father expressed an inability to connect with his children after being routinely exposed to children injured in combat. Additionally, he expressed feeling ashamed of the events that occurred during deployment and did not feel comfortable discussing any aspect of his experiences with his family. This emotional distance and lack of family engagement led to frequent arguments in the household.

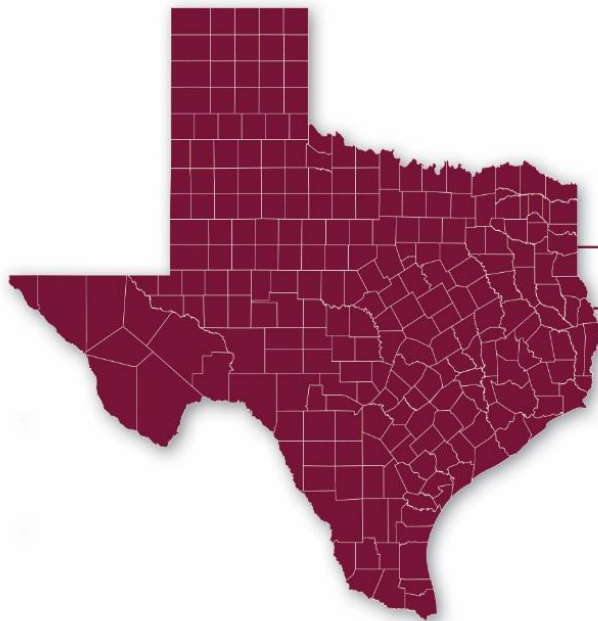
During their time in the program, the family learned how military separations and PTSD impacts the entire family system. Gradually, with the assistance of their case manager, they worked on understanding what it means to be a military family and what military separation was like for each member. The couple worked on communication and connection and made significant improvements in their co-parenting skills. Over time, the family reported significantly less arguments and more family engagement in the home. The couple stated that the program helped them maintain and strengthen their family connection.

<b>FY2022 SMVF Program Information</b>	<b>Amount</b>
Annual Budget for Grants	1,825,00
Total Number of Grants	5
Average Grantee Budget	365,000
Average Number of Youth/Families Served per Month FY21	302
Target Number of Youth/Families Served Annually FY22	1,461
Counties Served	12
Annual Budget for Grants	1,825,00

## SMVF Providers

Provider	Grantee or Subgrantee	Organization Name	County Served	Website / Email Contact	Phone Contact
<b>Boys &amp; Girls Club of Central Texas</b>	Grantee	Boys & Girls Club of Central Texas	Bell, Coryell, Lampasas, Williamson, McLennan	www.txbgc.org	512-301-7771
	Subgrantee	Texas A&M University		www.tamu.edu	979-845-3211
	Subgrantee	Aware Central Texas		awarecentraltexas.org	254-813-0968
	Subgrantee	Strong Star (University of Texas Health & Science Center at San Antonio)		www.patriot.uthscsa.edu; www.strongstar.org	210-562-6726
<b>Child Crisis Center of El Paso</b>	Grantee	Child Crisis Center of El Paso	El Paso	www.childcrisiselp.org	915-562-7955
<b>Motivation Education &amp; Training, Inc.</b>	Grantee	MET, Inc.	Harris, Montgomery, Waller	www.metinc.org	281-689-5544
<b>The Council on Alcohol &amp; Drug Abuse - Coastal Bend</b>	Grantee	The Council on Alcohol & Drug Abuse - Coastal Bend	Kleberg, Nueces	www.coada-cb.org	361-854-9199
<b>United Way of San Antonio and Bexar County</b>	Grantee	United Way of San Antonio and Bexar County	Bexar	www.unitedwaysatx.org	210-352-7000; 210-352-7076
	Subgrantee	Big Brothers Big Sisters of San Antonio	Bexar	www.bigmentor.org	210-225-6322
	Subgrantee	Any Baby Can of San Antonio	Bexar	www.anybabycansa.org	210-227-0170
	Subgrantee	Family Service Association of San Antonio	Bexar	www.family-service.org	210-299-2400

## SYSN: Statewide Youth Services Network



These state-level grantees maintain a statewide network of youth programs aimed at promoting positive youth development.

• **Big Brothers Big Sisters of North Texas**

• **Texas Alliance of Boys & Girls Clubs**

### SYSN Overview

The SYSN program creates a statewide network of youth programs aimed at positive youth development for youth ages 6 to 17. PEI funds allow state-level grantees to identify areas that may benefit from additional resources and target support to local communities to maintain the statewide network.

- ❖ **Program Start Date:** 2008
- ❖ **Population Served:** Children and youth ages 6-17
- ❖ **Counties Served:** Statewide. The level and extent of services in each county vary.
- ❖ **Measured Outcomes:**
  - Children remain safe during services, within 1 year, and within 3 years.
  - Percentage of youth not referred to juvenile probation.
- ❖ **Program Overview:** Services offered through SYSN providers include community and school-based mentoring, youth leadership development, and youth skills. Providers deliver evidence-based programs that proactively increase protective factors in youth including involvement with positive peer groups, involvement with school and community and presence of caring adults other than parents in the youth's life.
- ❖ **Success Story:** *Big Brothers Big Sisters (Lubbock County).* Big Sister Sarah first matched with Little Sister Ruth over seven years ago. During the 7-year match, Ruth's father was incarcerated twice and her mother released custody rights to Ruth resulting in Ruth's grandparents adopting her. During this year, Ruth's grandfather died due to COVID-19 complications. According to Ruth, having both her Big Sister and agency staff to support her during the many changes and challenges she experienced over the years has been invaluable. To this day, Ruth and her Big Sister continue to meet as often as they can to discuss her personal struggles and triumphs.

FY2022 SYSN Program Information	Amount
Annual Budget for Grants	1,525,000
Total Number of Grants	2
Average Grantee Budget	762,500
Average Number of Youth/Families Served per Month FY21	1,971
Target Number of Youth/Families Served Annually FY22	2,746
Counties Served	254

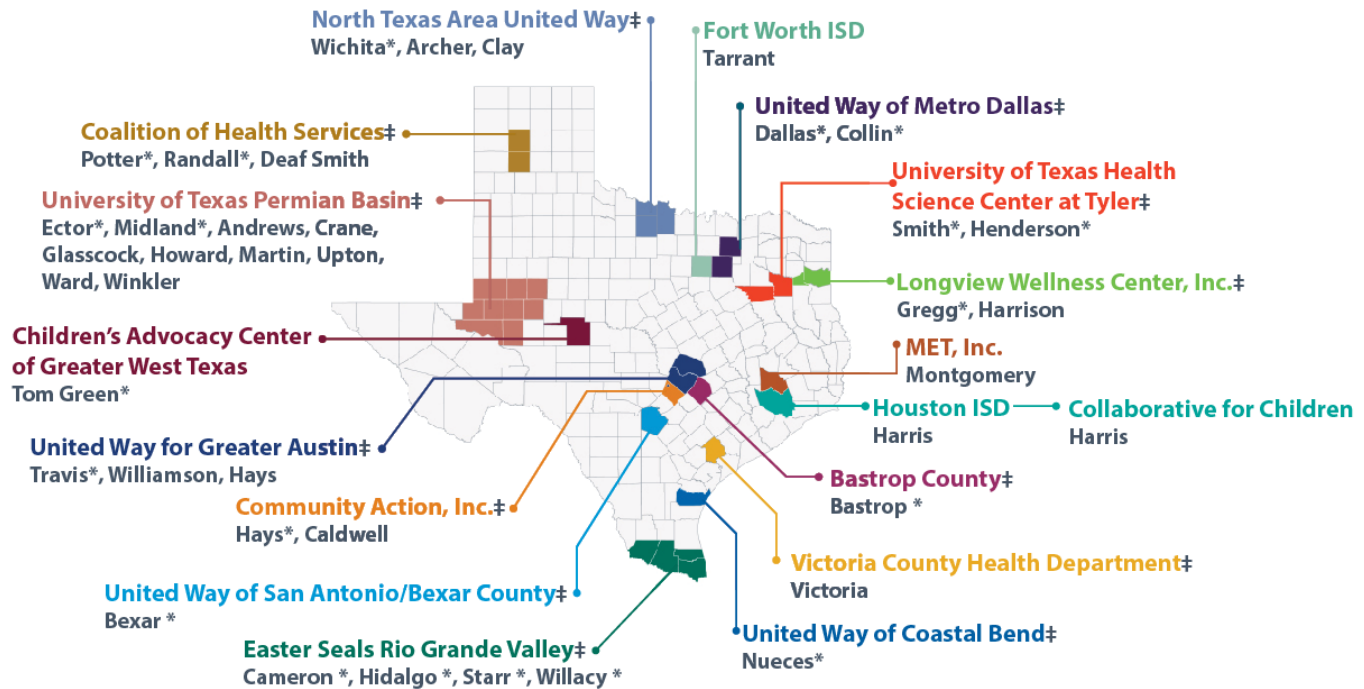
## SYSN Providers

Provider	Grantee or Subgrantee	Organization Name	County Served	Website / Email Contact	Phone Contact
<b>Big Brothers Big Sisters of North Texas</b>	Grantee	Subaward with other Big Brother Big Sister programs	The intent of SYSN is to create a statewide network of youth programs aimed at juvenile delinquency prevention and positive youth development. PEI funds allow state-level grantees to identify areas of high need and vulnerability and target specific support to local communities. The level and extent of services varies by county.	www.bbbstx.org	(888) 887-2447
<b>Texas Alliance of Boys &amp; Girls Clubs</b>	Grantee	Subaward with other Big Brother Big Sister programs	The intent of SYSN is to create a statewide network of youth programs aimed at juvenile delinquency prevention and positive youth development. PEI funds allow state-level grantees to identify areas of high need and vulnerability and target specific support to local communities. The level and extent of services varies by county.	www.txbg.org	(512) 301-7771

# THV: Texas Home Visiting

\* Denotes Primary Counties

‡ Funded through MIECHV (Maternal, Infant, Early Childhood Home Visiting)



## THV Overview

THV is a free, voluntary program through which early childhood and health professionals regularly visit the homes of pregnant women and families with children under 6 years of age. Using evidence-based models, the program supports positive child health and development outcomes, increases family self-sufficiency, and creates communities where children and families can thrive. THV also supports the coordination of local and state early childhood coalitions to build comprehensive early childhood systems. The unique Texas model utilizes both service and systems-level strategies to improve broad child and family outcomes.

- ❖ **Program Start Date:** 2012
- ❖ **Population Served:** Expecting parents, parents and caregivers of pre-kindergarten children who need help getting school-ready, raising multiple children, and/or getting back together after being apart.
- ❖ **Counties Served:** Andrews, Archer, Bastrop, Bexar, Caldwell, Cameron, Clay, Collin, Crane, Dallas, Deaf Smith, Ector, Glasscock, Gregg, Harris, Harrison, Hays, Henderson, Hidalgo, Howard, Martin, Midland, Montgomery, Potter, Randall, Smith, Starr, Tarrant, Tom Green, Travis, Upton, Victoria, Ward, Wichita, Willacy, Williamson, Winkler
- ❖ **Measured Outcomes:**
  - Children remain safe during services, within 1 year, and within 3 years.
  - Increase in parent/child interaction, ability to cope with parental stress.
  - Support positive health outcomes by addressing premature birth outcomes, attending well child visits, and support breastfeeding.



- ❖ **Program Overview:** Services offered through THV include evidence-based home visiting, parent education, and local systems building.
- ❖ **Success Story:** *Easter Seals (Tarrant County)* The Easter Seals Program began serving families through a combined program model utilizing Pathways Early Autism Intervention and the Parents as Teachers model. The first family served through the new program identified that they were struggling to support and understand the many needs of their child. The family's assigned social worker partnered with the parents to teach them various parenting strategies including, but not limited to, following the child's lead, removing demands and engaging in playful interaction. The parents sent their worker a video to showcase all the progress their family was making. They stated that through the strategies they learned through the program they learned so much about their child and were experiencing less overall stress.

FY2022 THV Program Information	Amount
Annual Budget for Grants	20,536,076
Total Number of Grants	20
Average Grantee Budget	1,026,804
Average Number of Youth/Families Served per Month FY21	3,048
Target Number of Youth/Families Served Annually FY22	5,700
Annual Budget for Grants	20,536,076
Total Number of Grants	20

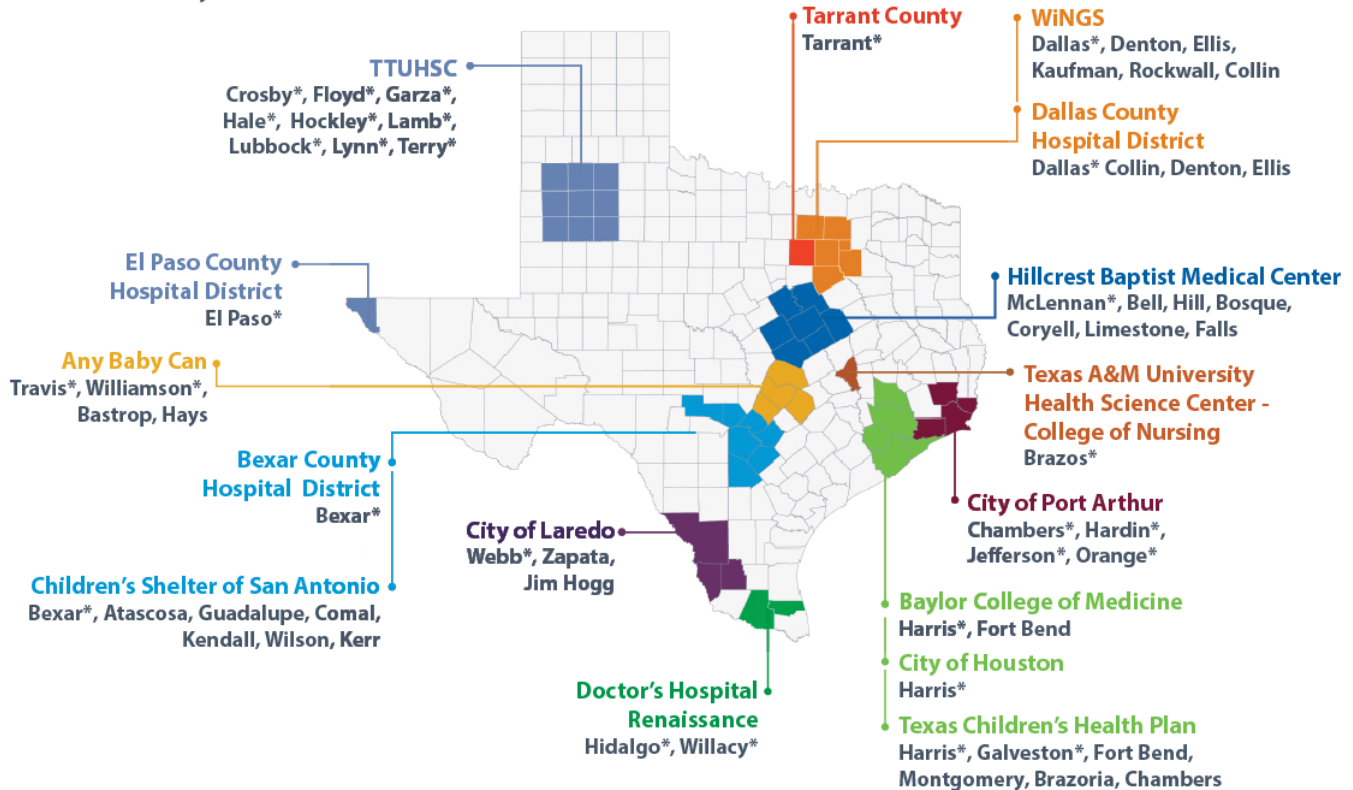
## THV Providers

Provider	Grantee or Subgrantee	Organization Name	County Served	Website / Email Contact	Phone Contact
<b>Bastrop County</b>	Grantee	Bastrop County	Bastrop	<a href="http://www.bastropcares.org">www.bastropcares.org</a>	512-581-4055
<b>Children's Advocacy Center of Greater West Texas</b>	Grantee	Children's Advocacy Center of Greater West Texas	Tom Green	<a href="http://www.cacgreaterwtx.org">www.cacgreaterwtx.org</a>	325-653-4673
<b>Coalition of Health Services</b>	Grantee	Coalition of Health Services	Primary: Potter, Randall Secondary: Deaf Smith	<a href="http://www.cohs.net">www.cohs.net</a>	806-337-1700
<b>Collaborative for Children</b>	Grantee	Collaborative for Children	Harris	<a href="http://www.collabforchildren.org">www.collabforchildren.org</a>	713-600-1100
<b>Community Action, Inc. of Central Texas</b>	Grantee	Community Action, Inc. of Central Texas	Primary: Hays Secondary: Caldwell	<a href="http://www.communityaction.com">www.communityaction.com</a>	512-392-1161; 512-665-5631
<b>Easter Seals Rio Grande Valley</b>	Grantee	Easter Seals Rio Grande Valley	Hidalgo, Cameron, Willacy, Hidalgo, Starr	<a href="http://www.easterseals-rgv.org">www.easterseals-rgv.org</a>	956-631-9171
<b>Fort Worth ISD</b>	Grantee	Fort Worth ISD	Tarrant	<a href="http://www.fwisd.org">www.fwisd.org</a>	817-814-2000
<b>Houston ISD</b>	Grantee	Houston ISD	Harris	<a href="http://www.houstonisd.org">www.houstonisd.org</a> ; <a href="https://www.houstonisd.org/HIPPY">https://www.houstonisd.org/HIPPY</a>	713-556-6000
<b>Longview Wellness Center, Inc.</b>	Grantee	Longview Wellness Center, Inc.	Gregg, Harrison	<a href="http://www.wellnesspointe.org">www.wellnesspointe.org</a>	903-758-2610
<b>Motivation Education &amp; Training, Inc.</b>	Grantee	MET, Inc.	Montgomery	<a href="http://www.metinc.org">www.metinc.org</a>	281-689-5544
<b>North Texas Area United Way, Inc.</b>	Grantee	North Texas Area United Way, Inc.	Archer, Clay, Wichita	<a href="http://www.ntauw.org">www.ntauw.org</a> ; <a href="http://www.wichitacountythv.com">www.wichitacountythv.com</a>	940-322-8638
<b>The University of Texas Permian Basin</b>	Grantee	The University of Texas Permian Basin	Primary: Ector; Midland Secondary: Andrews, Crane, Glasscock, Howard, Martin, Upton, Ward, Winkler	<a href="https://www.utpb.edu/academics/colleges/cohshp/departments/community-family-health/index">https://www.utpb.edu/academics/colleges/cohshp/departments/community-family-health/index</a>	432-552-4025
<b>United Way for Greater Austin</b>	Grantee	United Way for Greater Austin	Primary: Travis Secondary: Hays; Williamson	<a href="http://www.unitedwayaustin.org">www.unitedwayaustin.org</a>	512-475-6267
<b>United Way of Coastal Bend</b>	Grantee	United Way of Coastal Bend	Nueces	<a href="http://www.uwcb.org">www.uwcb.org</a>	361-882-2529
<b>United Way of Metropolitan Dallas</b>	Grantee	United Way of Metropolitan Dallas	Collin; Dallas	<a href="http://unitedwaydallas.org">unitedwaydallas.org</a>	214-978-0000

<b>Provider</b>	<b>Grantee or Subgrantee</b>	<b>Organization Name</b>	<b>County Served</b>	<b>Website / Email Contact</b>	<b>Phone Contact</b>
<b>United Way of San Antonio and Bexar County</b>	Grantee	United Way of San Antonio and Bexar County	Bexar	<a href="http://www.unitedwaysatx.org">www.unitedwaysatx.org</a>	210-352-7000
<b>University of Texas Health Science Center at Tyler</b>	Grantee	University of Texas Health Science Center at Tyler	Henderson, Smith	<a href="http://www.uthct.edu">www.uthct.edu</a>	903-877-7777
<b>Victoria County Health Department</b>	Grantee	Victoria County Health Department	Victoria	<a href="http://www.vcphd.org">www.vcphd.org</a>	361-578-6281

# TNFP: Texas Nurse-Family Partnership

\* Denotes Primary Counties



## TNFP Overview

TNFP is a free, voluntary program through which nurses partner with first-time mothers to improve prenatal care and provide one-on-one child development education and counseling. Families start the partnership with TNFP by their 28th week of pregnancy and can receive support until the child reaches 2 years of age.

- ❖ **Program Start Date:** 2008
- ❖ **Population Served:** First-time, low income mothers and their families from before their 28th week of pregnancy through their child's second birthday.
- ❖ **Counties Served:** Atascosa, Bastrop, Bell, Bexar, Bosque, Brazoria, Brazos, Chambers, Comal, Coryell, Crosby, Dallas, El Paso, Falls, Floyd, Fort Bend, Galveston, Garza, Guadalupe, Hale, Hardin, Harris, Hays, Hidalgo, Hill, Hockley, Jefferson, Jim Hogg, Kendall, Kerr, Lamb, Limestone, Lubbock, Lynn, McLennan, Montgomery, Orange, Tarrant, Terry, Travis, Webb, Willacy, Williamson, Wilson, Zapata
- ❖ **Measured Outcomes:**
  - Children remain safe during services, within 1 year, and within 3 years.
  - Increase in parent/child interaction, ability to cope with parental stress.
  - Support positive health outcomes by addressing premature birth outcomes, attending well child visits, and support breastfeeding.
- ❖ **Program Overview:** Services offered through TNFP includes evidence-based home visiting by a licensed nurse to address issues related to health, self-sufficiency, parenting, and stress

management.

- ❖ **Success Story:** *Nurse-Family Partnership Program - (Brazoria County)* Hillcrest Nurse-Family Partnership program was serving a mother who needed wheelchair assistance and her eight-month-old infant. The family was severely impacted by the winter storm and lost running water for 10 days. During the storm, the mother was able to locate enough water to mix baby formula, but not to bathe him. She reached out to Nurse-Family Partnership after the baby developed a severe rash from the baby wipes she utilized to give her child a bath. Hillcrest immediately mobilized to address the family's emergency needs. The next day, in part to Nurse-Family Partnership's advocacy, water was restored in the apartment complex and the baby's rash was resolved. Even after family normalcy resumed, the nurse home visitor continues to support the family in achieving their goals, which includes mom working towards completion of her associate degree.

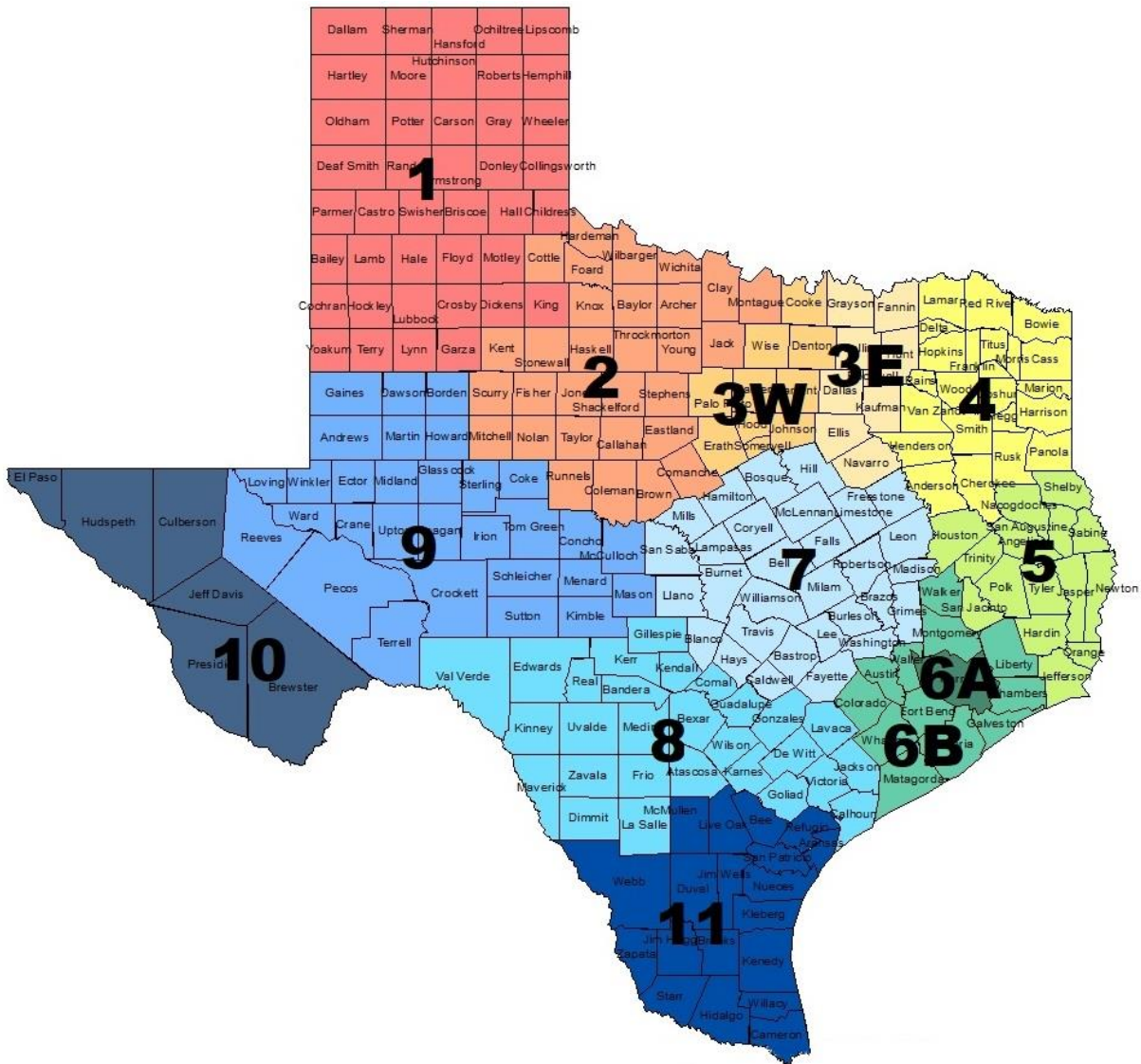
<b>FY2022 TNFP Program Information</b>	<b>Amount</b>
Annual Budget for Grants	16,932,878
Total Number of Grants	16
Average Grantee Budget	1,058,305
Average Number of Youth/Families Served per Month FY21	Pending
Target Number of Youth/Families Served Annually FY22	3,122
Counties Served	53

## TNFP Providers

Provider	Grantee or Subgrantee	Organization Name	County Served	Website / Email Contact	Phone Contact
<b>Any Baby Can of Austin, Inc.</b>	Grantee	Any Baby Can	Primary: Travis, Williamson Secondary: Bastrop, Hays	<a href="http://www.anybabycan.org">www.anybabycan.org</a>	512-454-3743
<b>Baylor College of Medicine</b>	Grantee	Baylor College of Medicine	Fort Bend, Harris	<a href="http://www.bcm.edu/healthcare/care-centers/teen-health-clinic">www.bcm.edu/healthcare/care-centers/teen-health-clinic</a>	281-820-2995
<b>Bexar County Hospital District</b>	Grantee	Bexar County Hospital District	Bexar	<a href="http://www.universityhealthsystem.com/services/pregnancy-childbirth/support/nurse-family-partnership">www.universityhealthsystem.com/services/pregnancy-childbirth/support/nurse-family-partnership</a>	210-658-4000
<b>City of Houston</b>	Grantee	City of Houston	Harris	<a href="http://www.houstontx.gov">www.houstontx.gov</a>	832-393-5169
	Subgrantee	Brighter & Brighter PLLC	Harris	<a href="http://www.brighter-brighter.com">www.brighter-brighter.com</a>	713-808-9553
<b>City of Laredo</b>	Grantee	City of Laredo	Primary: Webb Secondary: Zapata, Jim Hogg	<a href="http://www.cityoflaredo.com/Health/HealthIndex.htm">www.cityoflaredo.com/Health/HealthIndex.htm</a>	956-523-7848
<b>City of Port Arthur</b>	Grantee	City of Port Arthur	Chambers, Hardin, Jefferson, Orange	<a href="http://www.portarthurtx.gov">www.portarthurtx.gov</a>	409-983-8877
<b>Dallas County Hospital District</b>	Grantee	Parkland Hospital	Tarrant	<a href="http://www.parklandhospital.com/nurse-family-partnership">/www.parklandhospital.com/nurse-family-partnership</a>	214-266-1140
<b>Doctors Hospital Renaissance</b>	Grantee	Doctors Hospital Renaissance	Hidalgo, Willacy	<a href="http://www.dhrhealth.com/services/womens-hospital">www.dhrhealth.com/services/womens-hospital</a>	956-362-4190
<b>El Paso County Hospital District</b>	Grantee	El Paso County Hospital	El Paso	<a href="http://www.umcelpaso.org">www.umcelpaso.org</a>	915-544-1200
<b>Hillcrest Baptist Medical Center</b>	Grantee	Hillcrest Baptist Medical Center	Primary: McLennan Secondary: Bell, Hill, Bosque, Coryell, Limestone, Falls	<a href="http://www.bswhealth.com/locations/hillcrest/specialties/womens-health/nurse-family-partnership-program">www.bswhealth.com/locations/hillcrest/specialties/womens-health/nurse-family-partnership-program</a>	254-202-1130
<b>Tarrant County</b>	Grantee	Tarrant County Texas, Inc.	Dallas, Tarrant	<a href="http://health.tarrantcounty.com">health.tarrantcounty.com</a>	817-413-6320
<b>Texas A&amp;M University Health Science Center - College of Nursing</b>	Grantee	Texas A&M University Health Science Center - College of Nursing	Brazos	<a href="http://nursing.tamu.edu/">nursing.tamu.edu/</a>	979-436-0110
<b>Texas Children's Health Plan</b>	Grantee	Texas Children's Health Plan	Primary: Harris, Galveston Secondary: Montgomery, Fort Bend, Chambers, Brazoria	<a href="http://www.texaschildrenshealthplan.org">www.texaschildrenshealthplan.org</a>	800-990-8247

<b>Provider</b>	<b>Grantee or Subgrantee</b>	<b>Organization Name</b>	<b>County Served</b>	<b>Website / Email Contact</b>	<b>Phone Contact</b>
<b>The Children's Shelter</b>	Grantee	The Children's Shelter of San Antonio	Primary: Bexar Secondary: Atascosa, Guadalupe, Comal, Kendall, Wilson, Kerr	<a href="http://www.childrensshelter.org">www.childrensshelter.org</a>	210-212-2500
<b>Texas Tech University Health Science Center</b>	Grantee	University of Texas Health Science Center at Tyler	Lubbock, Crosby, Floyd, Garza, Hale, Hockley, Lamb, Lynn, Terry	<a href="http://ttuhsc.edu/nursing/combest">ttuhsc.edu/nursing/combest</a>	806-743-3390
<b>Women in Need of Generous Support</b>	Grantee	Women in Need of Generous Support (WiNGS)	Dallas, Tarrant	<a href="http://www.wingsdallas.org">www.wingsdallas.org</a>	214-826-9922

# PEI Program by DFPS Region and Associated Counties





## Region 1

### Region 1

Counties: Armstrong, Bailey, Briscoe, Carson, Castro, Childress, Cochran, Collingsworth, Crosby, Dallam, Deaf Smith, Dickens, Donley, Floyd, Garza, Gray, Hale, Hall, Hansford, Hartley, Hemphill, Hockley, Hutchinson, King, Lamb, Lipscomb, Lubbock, Lynn, Moore, Motley, Ochiltree, Oldham, Parmer, Potter, Randall, Roberts, Sherman, Swisher, Terry, Wheeler, Yoakum

Program	Provider	Grantee or Subgrantee	Organization Name	County Served	Website / Email Contact	Phone Contact
CYD	The United Way, Inc. dba United Way of Amarillo & Canyon	Grantee	United Way of Amarillo and Canyon	Potter	<a href="http://www.unitedwayama.org/">www.unitedwayama.org/</a>	806-376-6359; 806-468-8734
CYD	Young Women's Christian Association of Lubbock, Texas Inc.	Grantee	Young Women's Christian Association of Lubbock, Texas Inc.	Lubbock	<a href="http://www.ywcalubbock.org">www.ywcalubbock.org</a>	806-993-9922
FAYS	Texas Panhandle Mental Health/Mental Retardation	Grantee	Texas Panhandle Mental Health/Mental Retardation	Armstrong, Carson, Collingsworth, Dallam, Deaf Smith, Donley, Gray, Hall, Hemphill, Hutchinson, Lipscomb, Moore, Ochiltree, Oldham, Potter, Randall, Roberts, Sherman, Hansford, Hartley, Wheeler	<a href="http://www.texaspanhandlecenters.org">www.texaspanhandlecenters.org</a>	806-337-1000; 806-354-2191
		Subgrantee	Texas Panhandle Centers Behavioral and Developmental Health			<a href="http://www.texaspanhandlecenters.org">www.texaspanhandlecenters.org</a>

## Region 1

Program	Provider	Grantee or Subgrantee	Organization Name	County Served	Website / Email Contact	Phone Contact
FAYS (KNP)	Catholic Charities, Diocese of Lubbock, Inc.	Grantee	Catholic Charities, Diocese of Lubbock, Inc.	Bailey, Briscoe, Castro, Childress, Cochran, Crosby, Dickens, Floyd, Garza, Hale, Hockley, King, Lamb, Lubbock, Lynn, Motley, Parmer, Swisher, Terry, Yoakum	<a href="https://cclubbock.org/youth-and-families">https://cclubbock.org/youth-and-families</a>	806-765-8475
HOPES	Parenting Cottage, Inc.	Grantee	Parenting Cottage, Inc.	Lubbock	<a href="http://www.parentingcottage.org">www.parentingcottage.org</a>	806-795-7552
		Subgrantee	Covenant Health Systems	Lubbock	<a href="http://www.covenanthealth.net">www.covenanthealth.net</a>	978-312-4300
		Subgrantee	University Medical Center of Lubbock	Lubbock	<a href="http://www.utswmed.org">www.utswmed.org</a>	806-761-0710
HOPES	Family Support Services of Amarillo, Inc.	Grantee	Family Support Services of Amarillo, Inc.	Primary: Potter, Secondary: Randall	<a href="http://www.fss-ama.org">www.fss-ama.org</a>	806-342-2500
SYSN	Big Brothers Big Sisters Lone Star	Grantee	Big Brothers Big Sisters Lone Star	All Counties	<a href="http://www.bbbsa.org">www.bbbsa.org</a> ; <a href="http://www.bbbsstx.org">www.bbbsstx.org</a>	888-887-2447
SYSN	Texas Alliance of Boys & Girls Clubs	Grantee	Texas Alliance of Boys & Girls Clubs	All Counties	<a href="http://www.txbgc.org">www.txbgc.org</a>	512-301-7771
THV (MIECHV)	Coalition of Health Services	Grantee	Coalition of Health Services	Primary: Potter, Randall Secondary: Deaf Smith	<a href="http://www.cohs.net">www.cohs.net</a>	806-337-1700

## Region 1

Program	Provider	Grantee or Subgrantee	Organization Name	County Served	Website / Email Contact	Phone Contact
TNFP	Texas Tech University Health Science Center	Grantee	Texas Tech University Health Science Center	Lubbock, Crosby, Floyd, Garza, Hale, Hockley, Lamb, Lynn, Terry	ttuhsc.edu/nursing/combest	806-743-3390

**Region 2**

Counties: Archer, Baylor, Brown, Callahan, Clay, Coleman, Comanche, Cottle, Eastland, Fisher, Foard, Hardeman, Haskell, Jack, Jones, Kent, Knox, Mitchell, Montague, Nolan, Runnels, Scurry, Shackelford, Stephens, Stonewall, Taylor, Throckmorton, Wichita, Wilbarger, Young

<b>Program</b>	<b>Provider</b>	<b>Grantee or Subgrantee</b>	<b>Organization Name</b>	<b>County Served</b>	<b>Website / Email Contact</b>	<b>Phone Contact</b>
CYD	BCFS Health and Human Services	Grantee	BCFS Health and Human Services	Taylor	www.discoverbcfs.net	325-692-0033
FAYS	Catholic Charities, Diocese of Lubbock, Inc.	Grantee	Catholic Charities, Diocese of Lubbock, Inc.	Baylor, Cottle, Foard, Hardeman, Haskell, Kent, Knox, Stonewall, Throckmorton, Wilbarger	cclubbock.org/youth-and-families	806-765-8475
FAYS	STARRY, INC.	Grantee	STARRY, INC.	Archer, Clay, Comanche, Eastland, Jack, Montague, Shackelford, Stephens, Wichita, Young	www.starry.org	512-388-8290
FAYS	High Sky Children's Ranch, Inc.	Grantee	High Sky Children's Ranch, Inc.	Fisher, Mitchell, Nolan, Runnels, Scurry	staytogetherprogram.org; Highsky.org	432-699-1466
FAYS (KNP)	Catholic Charities, Diocese of Lubbock, Inc.	Grantee	Catholic Charities, Diocese of Lubbock, Inc.	Baylor, Cottle, Foard, Hardeman, Haskell, Kent, Knox, Stonewall, Throckmorton, Wilbarger	cclubbock.org/youth-and-families	806-765-8475
FAYS (KNP)	New Horizons Ranch and Center, Inc. (Family First)	Grantee	New Horizons Ranch and Center, Inc. (Family First)	Brown, Callahan, Coleman, Jones, Taylor	www.newhorizonsinc.com; www.nh-families.org	325-437-1852
Fatherhood EFFECT	BCFS Health and Human Services	Grantee	BCFS Health and Human Services	Taylor	www.discoverbcfs.net	903-526-0882
HIP	BCFS Health and Human Services	Grantee	BCFS Health and Human Services	All Counties	www.discoverbcfs.net/abilene	325-692-0033

## Region 2

Program	Provider	Grantee or Subgrantee	Organization Name	County Served	Website / Email Contact	Phone Contact
HOPEs	BCFS Health and Human Services	Grantee	BCFS Health and Human Services	Primary: Brown, Nolan, Taylor, Stephens Secondary: Callahan, Coleman, Jones, Shackelford	<a href="http://www.discoverbcfs.net/abilene">www.discoverbcfs.net/abilene</a>	325-692-0033
HOPEs	North Texas Area United Way, Inc.	Grantee	North Texas Area United Way, Inc.	Archer, Clay, Wichita	<a href="http://www.ntauw.org">www.ntauw.org</a> ; <a href="http://www.wichitacountythv.com">www.wichitacountythv.com</a>	940-322-8638
		Subgrantee	Wichita Falls Independent School District	Wichita	<a href="http://www.wfisd.net">www.wfisd.net</a>	940-235-1000
SYSN	Big Brothers Big Sisters Lone Star	Grantee	Big Brothers Big Sisters Lone Star	All Counties	<a href="http://www.bbbsa.org">www.bbbsa.org</a> ; <a href="http://www.bbbsstx.org">www.bbbsstx.org</a>	888-887-2447
SYSN	Texas Alliance of Boys & Girls Clubs	Grantee	Texas Alliance of Boys & Girls Clubs	All Counties	<a href="http://www.txbgc.org">www.txbgc.org</a>	512-301-7771
THV (MIECHV)	North Texas Area United Way, Inc.	Grantee	North Texas Area United Way, Inc.	Archer, Clay, Wichita	<a href="http://www.ntauw.org">www.ntauw.org</a> ; <a href="http://www.wichitacountythv.com">www.wichitacountythv.com</a>	940-322-8638

## Region 3

### Region 3

Counties: Collin, Cooke, Dallas, Denton, Ellis, Erath, Fannin, Grayson, Hood, Hunt, Johnson, Kaufman, Navarro, Palo Pinto, Parker, Rockwall, Somervell, Tarrant, Wise

Program	Provider	Grantee or Subgrantee	Organization Name	County Served	Website / Email Contact	Phone Contact
CYD	The University of North Texas at Dallas	Grantee	The University of North Texas at Dallas	Dallas	www.risingblazers.org	972-338-1345
		Subgrantee	Big Brothers Big Sisters - Lone Star	Dallas	bbbstx.org/greater-dallas/	888-887-2447
		Subgrantee	Boys & Girls Clubs of Greater Dallas	Dallas	bgcdallas.org	241-821-2950
		Subgrantee	Carter's House	Dallas	cartershouse.org	972-815-5004
		Subgrantee	For Oak Cliff	Dallas	foroakcliff.org	214-730-0081
		Subgrantee	Marc Cuban Heroes Basketball Center Initiative	Dallas	markcubanheroescenter.org	214-379-7451
		Subgrantee	Puede Network	Dallas	puedenetwork.com	214-901-0940
		Subgrantee	YMCA of Metropolitan Dallas	Dallas	ymcadallas.org	469-569-7620
		Subgrantee	Youth Revive	Dallas	youthrevive.org adrianm@youthrevive.org	214-414-9499
CYD	Girl Scouts of Northeast Texas	Grantee	Girl Scouts of Northeast Texas	Dallas	www.gsnetx.org	972-349-2400
		Subgrantee	Dallas Prestige Group	Dallas	www.dallasprestigegroup.com	972-591-3799

## Region 3

Program	Provider	Grantee or Subgrantee	Organization Name	County Served	Website / Email Contact	Phone Contact
CYD	Tarrant County	Grantee	Tarrant County	Tarrant	health.tarrantcounty.com	817-740-4340
FAYS	CCD Counseling, P.A.	Grantee	CCD Counseling, P.A.	Dallas, Denton	www.familytreeprogram.org	888-837-0666 Ext. 2
FAYS	STARRY, INC.	Grantee	STARRY, INC.	Collin, Cooke, Erath, Fannin, Grayson, Hood, Hunt, Somervell, Wise	www.starry.org	512-388-8290
FAYS	Andrews Center	Grantee	Andrews Center	Ellis, Kaufman, Navarro	www.andrewscenter.com	903-597-1351; 903-581-2835
FAYS (KNP)	ACH Child and Family Services	Grantee	ACH Child and Family Services	Johnson, Palo Pinto, Parker, Tarrant	www.ACHservices.org	817-335-4673; 888-296-8099
HIP	Gateway to Success	Grantee	Gateway to Success	Primary: Dallas Secondary: Collin, Denton, Ellis, Kaufman	gatewaytosuccessinc.wixsite.com/gts-2013	972-897-7044
HIP	MHMR of Tarrant County	Grantee	MHMR of Tarrant County	Primary: Tarrant Secondary: Cooke, Denton, Erath, Hood, Johnson, Palo Pinto, Parker, Somervell, Wise	www.mhmrtc.org/; www.earlyisbestnorthtexas.org/	800-866-4265
HOPES	My Health My Resources of Tarrant County	Grantee	My Health My Resources of Tarrant County	Primary: Tarrant, Cooke, Denton, Ellis, Erath, Hood, Johnson, Palo Pinto, Parker, Somervell, and Wise	www.mhmrtarrant.org; www.EarlyIsBestNorthTexas.org	817-335-3022
		Subgrantee	Center for Transforming Lives	Tarrant	www.transforminglives.org	817-332-6191

## Region 3

Program	Provider	Grantee or Subgrantee	Organization Name	County Served	Website / Email Contact	Phone Contact
HOPEs	United Way Metropolitan Dallas, Inc.	Grantee	United Way Metropolitan Dallas, Inc.	Primary: Dallas Secondary: Collin	www.unitedwaydallas.org	214-978-0000
HOPEs	Presbyterian Children's Homes & Services	Grantee	Presbyterian Children's Homes & Services	Navarro	www.pchas.org	800-888-1904; 512-476-1234
SYSN	Big Brothers Big Sisters Lone Star	Grantee	Big Brothers Big Sisters Lone Star	All Counties	www.bbbsa.org; www.bbbstx.org	888-887-2447
SYSN	Texas Alliance of Boys & Girls Clubs	Grantee	Texas Alliance of Boys & Girls Clubs	All Counties	www.txbgc.org	512-301-7771
THV	Fort Worth ISD	Grantee	Fort Worth ISD	Tarrant	www.fwisd.org	817-814-2000
THV (MIECHV)	United Way of Metropolitan Dallas	Grantee	United Way of Metropolitan Dallas	Collin; Dallas	unitedwaydallas.org	214-978-0000
		Subgrantee	Lumin Education	Dallas	www.lumineducation.org	214-824-8950
		Subgrantee	AVANCE of Dallas	Dallas	www.avance-ntx.org	214-887-9907
		Subgrantee	Metrocare	Dallas	www.metrocareservices.org	214-743-1200
		Subgrantee	Family Care Connection	Dallas	www.familycareconnection.org	972-298-3366
TNFP	Dallas County Hospital District	Grantee	Dallas County Hospital District	Primary: Dallas Secondary: Collin, Denton, Ellis	www.parklandhospital.com/nurse-family-partnership	214-266-1140
		Grantee	Tarrant County	Tarrant	health.tarrantcounty.com	817-413-6320



## Region 3

Program	Provider	Grantee or Subgrantee	Organization Name	County Served	Website / Email Contact	Phone Contact
		Subgrantee	Big Brothers Big Sisters - Lone Star	Tarrant	www.bbbstx.org	972-573-2427
		Subgrantee	Boys & Girls Clubs of Greater Tarrant County	Tarrant	www.bgcgtc.org	817-720-9371
		Subgrantee	Camp Fire First Texas	Tarrant	www.campfirefw.org	817-831-2111
		Subgrantee	Girls Inc of Tarrant County	Tarrant	www.girlsinctarrant.org	817-259-1050
		Subgrantee	MHMR of Tarrant County	Tarrant	www.mhmrarrant.org	682-287-5100
		Subgrantee	Northside Inter-Community Agency - Fort Worth	Tarrant	nicaagency.org nicacyd@nicaagency.org	817-626-1102
TNFP	Women in Need of Generous Support (WiNGS)	Grantee	WiNGS	Primary: Dallas Secondary: Denton, Ellis, Kaufman, Rockwall, Collin	www.wingsdallas.org	214-826-9922

## Region 4

### Region 4

Counties: Anderson, Bowie, Camp, Cass, Cherokee, Delta, Franklin, Gregg, Harrison, Henderson, Hopkins, Lamar, Marion, Morris, Panola, Rains, Red River, Rusk, Smith, Titus, Upshur, Van Zandt, Wood

Program	Provider	Grantee or Subgrantee	Organization Name	County Served	Website / Email Contact	Phone Contact
FAYS	Sabine Valley Regional MHMR Center	Grantee	Community Healthcore	Bowie, Camp, Cass, Franklin, Gregg, Harrison, Marion, Morris, Panola, Red River, Rusk, Titus, Upshur	<a href="http://www.communityhealthcore.com">www.communityhealthcore.com</a>	(903) 758-2471; (866) 782-7031; (800) 832-1009
FAYS	STARRY, INC.	Grantee	STARRY, INC.	Hopkins, Lamar, Rains	<a href="http://www.starry.org">www.starry.org</a>	512-388-8290
FAYS	Andrews Center	Grantee	Andrews Center	Henderson, Smith, Van Zandt, Wood	<a href="http://www.andrewscenter.com">www.andrewscenter.com</a>	(903) 597-1351; (903) 581-2835
FAYS	Anderson Cherokee Community Enrichment Services	Grantee	ACCESS	Anderson, Cherokee	<a href="http://www.access-center.org">www.access-center.org</a>	903-586-3175
		Subgrantee	Kaufman County Shelter	Kaufman	<a href="http://norvillecenter.org">norvillecenter.org</a>	469-376-4510
HIP	BCFS Health and Human Services	Grantee	BCFS Health and Human Services	Primary: Anderson, Bowie, Smith, Gregg, Henderson, Cass, Marion, Cherokee Secondary: Lamar, Upshur, Panola, Red River	<a href="https://discoverbcfs.net">https://discoverbcfs.net</a>	903-526-0882
HOPES	Buckner Children and Family Services, Inc.	Grantee	Buckner Children and Family Services, Inc.	Primary: Gregg Secondary: Harrison, Rusk, Upshur	<a href="http://www.buckner.org">www.buckner.org</a>	903-757-9383

## Region 4

Program	Provider	Grantee or Subgrantee	Organization Name	County Served	Website / Email Contact	Phone Contact
HOPES	University of Texas Health Science Center at Tyler	Grantee	University of Texas Health Science Center at Tyler	Henderson, Smith	www.uthct.edu	903-877-7777
SYSN	Big Brothers Big Sisters Lone Star	Grantee	Big Brothers Big Sisters Lone Star	All Counties	www.bbbsa.org; www.bbbstx.org	888-887-2447
SYSN	Texas Alliance of Boys & Girls Clubs	Grantee	Texas Alliance of Boys & Girls Clubs	All Counties	www.txbgc.org	512-301-7771
THV (MIECHV)	University of Texas Health Science Center at Tyler	Grantee	University of Texas Health Science Center at Tyler	Henderson, Smith	www.uthct.edu	903-877-7777
THV (MIECHV)	Longview Wellness Center, Inc.	Grantee	Longview Wellness Center, Inc.	Gregg, Harrison	www.wellnesspointe.org	903-758-2610

## Region 5

### Region 5

Counties: Angelina, Hardin, Houston, Jasper, Jefferson, Nacogdoches, Newton, Orange, Polk, Sabine, San Augustine, San Jacinto, Shelby, Trinity, Tyler

Program	Provider	Grantee or Subgrantee	Organization Name	County Served	Website / Email Contact	Phone Contact
FAYS	Buckner Children and Family Services, Inc.	Grantee	Buckner Children and Family Services, Inc.	Hardin, Jefferson, Orange	<a href="http://www.buckner.org">www.buckner.org</a>	409-861-0582
FAYS	Deep East Texas Council of Governments	Grantee	DETCOG	Angelina, Houston, Jasper, Nacogdoches, Newton, Polk, Sabine, San Augustine, San Jacinto, Shelby, Trinity, Tyler	<a href="http://www.detcog.gov">www.detcog.gov</a>	936-634-2247; 800-256-6848
Fatherhood EFFECT	Buckner Children and Family Services, Inc.	Grantee	Buckner Children and Family Services, Inc.	Jefferson	<a href="http://www.buckner.org">www.buckner.org</a>	800-442-4800
HOPES	Buckner Children and Family Services, Inc.	Grantee	Buckner Children and Family Services, Inc.	Primary: Jefferson Secondary: Orange, Hardin	<a href="http://www.buckner.org">www.buckner.org</a>	409-966-0976
SYSN	Big Brothers Big Sisters Lone Star	Grantee	Big Brothers Big Sisters Lone Star	All Counties	<a href="http://www.bbbsa.org">www.bbbsa.org</a> ; <a href="http://www.bbbsstx.org">www.bbbsstx.org</a>	888-887-2447
SYSN	Texas Alliance of Boys & Girls Clubs	Grantee	Texas Alliance of Boys & Girls Clubs	All Counties	<a href="http://www.txbgc.org">www.txbgc.org</a>	512-301-7771
TNFP	City of Port Arthur	Grantee	City of Port Arthur	Jefferson, Hardin, Orange, Chambers	<a href="http://www.portarthurtx.gov">www.portarthurtx.gov</a>	409-983-8877

## Region 6

### Region 6

Counties: Austin, Brazoria, Chambers, Colorado, Fort Bend, Galveston, Harris, Liberty, Matagorda, Montgomery, Walker, Waller, Wharton

Program	Provider	Grantee or Subgrantee	Organization Name	County Served	Website / Email Contact	Phone Contact
CYD	Harris County Resources for Children and Adults	Grantee	Harris County Resources for Children and Adults	Harris	resources.harriscountytexas.gov/	713-295-2500; 713-394-4000
		Subgrantee	Alliance for Multicultural Community Services	Harris	thealliancetx.org djoost@thealliancetx.org	712-776-4700 ext.110
		Subgrantee	Communities in Schools - Southeast	Harris	cistxjv.org dmones@cistxjv.org	979-256-4432
		Subgrantee	Connaster & Nicksch Consulting, LLC	Harris	dkniksch@gmail.com; jenconnatser@gmail.com	713-449-6151
		Subgrantee	Equip 24/7	Harris	teamfirststandgoal.org tsmith@teamfirststandgoal.org	713-571-9121
		Subgrantee	Partnership for the Advancement & Immersion of Refugees (PAIR)	Harris	www.pairhouston.org	713-771-111
		Subgrantee	Pasadena Community Resource Center	Harris	pasadenacommunityresourcecenter.org	281-740-0290
CYD	The Children's Center, Inc.	Grantee	The Children's Center, Inc.	Galveston	www.thechildrenscenterinc.org	409-765-5212
		Subgrantee	Artist Boat	Galveston	www.artistboat.org; kklay@artistboat.org	409-632-0388

## Region 6

Program	Provider	Grantee or Subgrantee	Organization Name	County Served	Website / Email Contact	Phone Contact
		Subgrantee	Galveston Independent School District	Galveston	www.gisd.org/central	832-785-8591 409-739-5369
		Subgrantee	Iconoclast Artists	Galveston	www.iconoclastartists.org	713-528-0527
		Subgrantee	Sea Star Base	Galveston	www.ssbgalveston.org; mleblanc@ssbgalveston.org	409-572-2560 ext.135
FAYS	DePelchin Children's Center	Grantee	DePelchin Children's Center	Ft. Bend, Harris, Waller	www.depelchin.org	713-730-2335
FAYS	Family Service Center of Galveston County, Texas	Grantee	Family Service Center of Galveston County, Texas	Chambers, Galveston, Liberty	www.fsc-galveston.org	409-762-8636; 281-576-6366; 409-938-4814
FAYS	Montgomery County Youth Services, Inc.	Grantee	Montgomery County Youth Services, Inc.	Montgomery, Walker	www.sayyestoyouth.org	936-756-8682; 888-756-8682
FAYS	Youth and Family Counseling Services	Grantee	Youth and Family Counseling Services	Brazoria, Matagorda, Wharton	www.yfcs.org	979-849-7751
		Subgrantee	YFCS-Angleton	Brazoria	www.yfcs.org	979-849-7751
FAYS	Colorado County Youth and Family Services, Inc.	Grantee	Colorado County Youth and Family Services, Inc.	Austin, Colorado, Fayette	www.ccyfs.org	979-732-8355
FAYS (FRC; KNP)	DePelchin Children's Center	Grantee	DePelchin Children's Center	Ft. Bend, Harris, Waller	www.depelchin.org	713-730-2335

## Region 6

Program	Provider	Grantee or Subgrantee	Organization Name	County Served	Website / Email Contact	Phone Contact
Fatherhood EFFECT	DePelchin Children's Center	Grantee	DePelchin Children's Center	Harris	<a href="http://www.depelchin.org">www.depelchin.org</a>	713-730-2335
Fatherhood EFFECT	Family Service Center of Galveston County, Texas	Grantee	Family Service Center of Galveston County, Texas	Galveston	<a href="http://www.fsc-galveston.org">www.fsc-galveston.org</a>	409-762-8636
Fatherhood EFFECT	Motivation Education & Training, Inc.	Grantee	MET, Inc.	Montgomery	<a href="http://www.metinc.org">www.metinc.org</a>	832-993-7202
HIP	City of Houston Health Department	Grantee	City of Houston Health Department	Harris	<a href="http://www.houstontx.gov/health">http://www.houstontx.gov/health</a>	832-393-5169
HOPES	Aware Central Texas	Grantee	Aware Central Texas	Primary: Bell Secondary: Coryell, Milam, Lampasas	<a href="http://www.awarecentraltexas.org">www.awarecentraltexas.org</a>	254-213-2986
HOPES	Baylor College of Medicine	Grantee	Baylor College of Medicine	Primary: Harris Secondary: Galveston, Fort Bend, Brazoria, Chambers, Liberty, Montgomery, Waller	<a href="http://www.bcm.edu/departments/pediatrics/sections-divisions-centers/public-health-pediatrics">www.bcm.edu/departments/pediatrics/sections-divisions-centers/public-health-pediatrics</a>	832-824-6522
		Subgrantee	Texas Children's Hospital – Houston	Harris	<a href="http://www.texaschildrens.org">www.texaschildrens.org</a>	832-824-9322
HOPES	DePelchin Children's Center	Grantee	DePelchin Children's Center	Primary: Harris Secondary: Brazoria, Chambers, Fort Bend, Galveston, Liberty, Montgomery, Waller	<a href="https://www.depelchin.org/">https://www.depelchin.org/</a>	713-730-2335

## Region 6

Program	Provider	Grantee or Subgrantee	Organization Name	County Served	Website / Email Contact	Phone Contact
		Subgrantee	Collaborative for Children - Houston	Harris	<a href="http://www.collabforchildren.org">www.collabforchildren.org</a>	713-600-1100
		Subgrantee	Harris County Protective Services for Children and Adults	Harris	<a href="http://resources.harriscountytexas.gov">resources.harriscountytexas.gov</a>	712-394-4000
HOPES	Motivation Education & Training, Inc.	Grantee	MET, Inc.	Primary: Montgomery Secondary: Liberty, East Harris	<a href="http://www.metinc.org">www.metinc.org</a>	281-689-5544
HOPES	Stanzel Family Foundation, Inc.	Grantee	Stanzel Family Foundation, Inc.	Colorado; Fayette	<a href="http://www.sw-pat.org">www.sw-pat.org</a>	979-743-9119
SMVF	Motivation Education & Training, Inc.	Grantee	Motivation Education & Training, Inc.	Montgomery, Harris; Waller	<a href="http://www.metinc.org">www.metinc.org</a>	281-689-5544
SYSN	Big Brothers Big Sisters Lone Star	Grantee	Big Brothers Big Sisters Lone Star	All Counties	<a href="http://www.bbbsa.org">www.bbbsa.org</a> ; <a href="http://www.bbbsstx.org">www.bbbsstx.org</a>	888-887-2447
SYSN	Texas Alliance of Boys & Girls Clubs	Grantee	Texas Alliance of Boys & Girls Clubs	All Counties	<a href="http://www.txbgc.org">www.txbgc.org</a>	512-301-7771
THV	Collaborative for Children	Grantee	Collaborative for Children	Harris	<a href="http://www.collabforchildren.org">www.collabforchildren.org</a>	713-600-1100
THV	Houston ISD	Grantee	Houston ISD	Harris	<a href="http://www.houstonisd.org">www.houstonisd.org</a> ; <a href="https://www.houstonisd.org/HIPPY">https://www.houstonisd.org/HIPPY</a>	713-556-6000
THV	Motivation Education & Training, Inc.	Grantee	MET, Inc.	Montgomery	<a href="http://www.metinc.org">www.metinc.org</a>	281-689-5544



## Region 6

Program	Provider	Grantee or Subgrantee	Organization Name	County Served	Website / Email Contact	Phone Contact
TNFP	Baylor College of Medicine	Grantee	Baylor College of Medicine	Primary: Harris Secondary: Fort Bend	<a href="http://www.bcm.edu/healthcare/care-centers/teen-health-clinic">www.bcm.edu/healthcare/care-centers/teen-health-clinic</a>	281-820-2995
TNFP	City of Houston	Grantee	City of Houston	Harris	<a href="http://www.houstontx.gov">www.houstontx.gov</a>	832-393-5169
		Subgrantee	Brighter & Brighter PLLC	Harris	<a href="http://www.brighter-brighter.com">www.brighter-brighter.com</a>	713-808-9553
TNFP	Texas Children's Health Plan	Grantee	Texas Children's Health Plan	Primary: Harris, Galveston Secondary: Montgomery, Fort Bend, Chambers, Brazoria	<a href="http://www.texaschildrenshealthplan.org">www.texaschildrenshealthplan.org</a>	800-990-8247

## Region 7

### Region 7

Counties: Bastrop, Bell, Blanco, Bosque, Brazos, Burleson, Burnet, Caldwell, Coryell, Falls, Fayette, Freestone, Grimes, Hamilton, Hays, Hill, Lampasas, Lee, Leon, Limestone, Llano, Madison, McLennan, Milam, Mills, Robertson, San Saba, Travis, Washington, Williamson

Program	Provider	Grantee or Subgrantee	Organization Name	County Served	Website / Email Contact	Phone Contact
CYD	Boys and Girls Club of Central Texas, Inc.	Grantee	Boys and Girls Club of Central Texas, Inc.	Bell	<a href="http://www.bgctx.org/">www.bgctx.org/</a>	254-699-5808
CYD	City of Austin	Grantee	City of Austin	Travis	<a href="http://austintexas.gov/department/health">austintexas.gov/department/health</a>	512-972-6217
		Subgrantee	Del Valle Healthy Adolescent Project	Travis	<a href="http://www.austintexas.gov/department/austin-healthy-adolescent-aha-program">www.austintexas.gov/department/austin-healthy-adolescent-aha-program</a>	512-972-5087
		Subgrantee	E4 Youth	Travis	<a href="http://www.e4youth.org">www.e4youth.org</a>	970-371-9227
		Subgrantee	Mexic-Arte Museum	Travis	<a href="http://www.mexic-artemuseum.org">www.mexic-artemuseum.org</a>	512-200-7268
		Subgrantee	Workers Assistance Program - Austin	Travis	<a href="http://www.youthadvocacy.org">www.youthadvocacy.org</a>	512-799-1025
CYD	Communities in Schools of the Heart of Texas	Grantee	Communities in Schools of the Heart of Texas	McLennan	<a href="http://www.cishot.org">www.cishot.org</a>	254-753-6002
FAYS	Greater San Marcos Youth Council	Grantee	Greater San Marcos Youth Council	Hays	<a href="http://www.gsmyc.org">www.gsmyc.org</a>	512-754-0500; 800-457-0797
FAYS	Twin City Mission	Grantee	Twin City Mission	Brazos, Burleson, Falls, Grimes, Leon, Limestone, Madison, Milam, Robertson, Washington	<a href="http://www.twincitymission.org">www.twincitymission.org</a>	979-260-7336; 800-865-9921

## Region 7

Program	Provider	Grantee or Subgrantee	Organization Name	County Served	Website / Email Contact	Phone Contact
FAYS	Youth and Family Alliance (dba Lifeworks)	Grantee	Lifeworks	Travis	www.lifeworksaustin.org	512-735-2400
FAYS	STARRY, INC.	Grantee	STARRY, INC.	Bell, Bosque, Coryell, Hamilton, Lampasas, McLennan, Williamson	www.starry.org	512-388-8290
FAYS	New Horizons Ranch and Center, Inc. (Family First)	Grantee	Family First	Mills, San Saba	www.newhorizonsinc.com; www.nh-families.org	325-437-1852
FAYS (KNP)	ACH Child and Family Services	Grantee	ACH Child and Family Services	Hill	www.ACHservices.org	817-335-4673; 888-296-8099
FAYS	Anderson Cherokee Community Enrichment Services (dba ACCESS)	Grantee	ACCESS	Freestone	www.access-center.org	877-811-1289
FAYS	Colorado County Youth and Family Services, Inc.	Grantee	Colorado County Youth and Family Services, Inc.	Fayette	www.ccyfs.org	979-732-8355
FAYS	Connections Individual and Family Services, Inc.	Grantee	Connections, Inc.	Bastrop, Caldwell, Lee	www.connectionsifs.org	830-629 6571 Ext. 232
FAYS	K'STAR, Inc.	Grantee	K'STAR, Inc.	Blanco, Burnet	www.kstar.org	830-896-5404

## Region 7

Program	Provider	Grantee or Subgrantee	Organization Name	County Served	Website / Email Contact	Phone Contact
FAYS (KNP)	New Horizons Ranch and Center	Grantee	New Horizons Ranch and Center	Mills, San Saba	www.newhorizonsinc.com; www.nh-families.org	325-437-1852
Fatherhood EFFECT	Housing Authority of the City of Austin	Grantee	Housing Authority of the City of Austin	Travis	www.hacanet.org/events/i-dads-	512-477-4488
Fatherhood EFFECT	STARRY, INC.	Grantee	STARRY, INC.	McLennan, Bell	www.starry.org	254-244-2400
HIP	New Jerusalem Holy Christian Church Outreach Ministries	Grantee	New Jerusalem Holy Christian Church	Primary: Bell, McLennan Secondary: Falls, Lampasas, Coryell	www.njhccoutreachministries.com/	254-432-9763
HIP	The SAFE Alliance	Grantee	The SAFE Alliance	Primary: Travis Secondary: Williamson	www.safeaustin.org	512-267-7233
HOPES (FRC)	The SAFE Alliance	Grantee	The SAFE Alliance	Primary: Travis Secondary: Williamson	www.safeaustin.org	512-267-7233
		Subgrantee	Any Baby Can of Austin	Travis	www.anybabycan.org	512-454-3743
HOPES	Family Abuse Center	Grantee	Family Abuse Center	McLennan	www.hopeswaco.org	257-732-0482
HOPES	Project Unity	Grantee	Project Unity	Brazos	www.projectunitytx.org	979-595-2900
HOPES	Stanzel Family Foundation, Inc.	Grantee	Stanzel Family Foundation, Inc.	Fayette	www.sw-pat.org	979-743-9119
SMVF	Boys & Girls Club of Central Texas	Grantee	Boys & Girls Club of Central Texas	Bell, Coryell, Lampasas, Williamson, McLennan	www.txbgc.org	512-301-7771

## Region 7

Program	Provider	Grantee or Subgrantee	Organization Name	County Served	Website / Email Contact	Phone Contact
		Subgrantee	Texas A&M University		www.tamu.edu	979-845-3211
		Subgrantee	Aware Central Texas		awarecentraltexas.org	254-813-0968
		Subgrantee	Strong Star (University of Texas Health & Science Center at San Antonio)		www.patriot.uthscsa.edu; www.strongstar.org	210-562-6726
SYSN	Big Brothers Big Sisters Lone Star	Grantee	Big Brothers Big Sisters Lone Star	All Counties	www.bbbsa.org; www.bbbstx.org	888-887-2447
SYSN	Texas Alliance of Boys & Girls Clubs	Grantee	Texas Alliance of Boys & Girls Clubs	All Counties	www.txbgc.org	512-301-7771
TNFP	Any Baby Can of Austin, Inc.	Grantee	Any Baby Can of Austin, Inc.	Primary: Travis, Williamson Secondary: Bastrop, Hays	www.anybabycan.org	512-454-3743
TNFP	Hillcrest Baptist Medical Center	Grantee	Hillcrest Baptist Medical Center	Primary: McLennan Secondary: Bell, Hill, Bosque, Coryell, Limestone, Falls	www.bswhealth.com/locations/hillcrest/specialties/womens-health/nurse-family-partnership-program	254-202-1130
TNFP	Texas A&M University Health Science Center - College of Nursing	Grantee	Texas A&M University Health Science Center - College of Nursing	Brazos	https://nursing.tamu.edu/	979-436-0110
THV (MIECHV)	Bastrop County	Grantee	Bastrop County	Bastrop	www.bastropcares.org	512-581-4055

## Region 7

Program	Provider	Grantee or Subgrantee	Organization Name	County Served	Website / Email Contact	Phone Contact
THV (MIECHV)	Community Action, Inc. of Central Texas	Grantee	Community Action, Inc. of Central Texas	Primary: Hays Secondary: Caldwell	<a href="http://www.communityaction.com">www.communityaction.com</a>	512-392-1161; 512-665-5631
THV (MIECHV)	United Way for Greater Austin	Grantee	United Way for Greater Austin	Primary: Travis Secondary: Hays; Williamson	<a href="http://www.unitedwayaustin.org">www.unitedwayaustin.org</a>	512-475-6267

## Region 8

### Region 8

Counties: Atascosa, Bandera, Bexar, Calhoun, Comal, DeWitt, Dimmit, Edwards, Frio, Gillespie, Goliad, Gonzales, Guadalupe, Jackson, Karnes, Kendall, Kerr, Kinney, La Salle, Lavaca, Maverick, Medina, Real, Uvalde, Val Verde, Victoria, Wilson, Zavala

Program	Provider	Grantee or Subgrantee	Organization Name	County Served	Website / Email Contact	Phone Contact
Early Intervention Court	Bexar County	Grantee	Bexar County	Bexar	<a href="http://www.bexar.org/2209/Early-Intervention-Program">www.bexar.org/2209/Early-Intervention-Program</a>	210-335-2829
CYD	Southwest Keys Programs, Inc.	Grantee	Southwest Keys Programs, Inc.	Bexar	<a href="http://www.southwestkey.org">www.southwestkey.org</a>	512-462-2181
FAYS	Mid-Coast Family Services, Inc.	Grantee	Mid-Coast Family Services, Inc.	Calhoun, DeWitt, Jackson, Lavaca, Victoria	<a href="http://Midcoastfamily.org">Midcoastfamily.org</a>	361-575-7842
FAYS	Connections Individual and Family Services, Inc.	Grantee	Connections Individual and Family Services, Inc.	Comal, Guadalupe, Wilson, Karnes, Atascosa, Frio, Zavala, Gonzales, Caldwell, Bastrop, and Lee	<a href="http://www.connectionsifs.org">www.connectionsifs.org</a>	830-629-6571 Ext. 232
FAYS	K'STAR, Inc.	Grantee	K'STAR, Inc.	Bandera, Blanco, Burnet, Edwards, Gillespie, Kendall, Kerr, Kimble, Llano, Mason, Medina, Menard, Real, Uvalde	<a href="http://www.kstar.org">www.kstar.org</a>	830-896-5404
FAYS	Serving Children and Adults in Need, Inc.	Grantee	Serving Children and Adults in Need, Inc.	Dimmit, Duval, Jim Hogg, La Salle, Maverick, Starr, Webb, Zapata	<a href="http://www.scan-inc.org">www.scan-inc.org</a>	956-724-3177
FAYS	BCFS Health and Human Services	Grantee	BCFS Health and Human Services	Bexar, Goliad, Kinney	<a href="https://discoverbcfs.net/FAYS">https://discoverbcfs.net/FAYS</a>	210-283-5183 (San Antonio);

## Region 8

Program	Provider	Grantee or Subgrantee	Organization Name	County Served	Website / Email Contact	Phone Contact
HIP	Catholic Charities Archdiocese of San Antonio, Inc.	Grantee	Catholic Charities Archdiocese of San Antonio, Inc.	Bexar	<a href="https://ccaosa.org/">https://ccaosa.org/</a>	210-222-1294
HOPES	Bexar County	Grantee	Bexar County	Bexar	<a href="https://www.bexar.org/">https://www.bexar.org/</a>	210-335-2011
HOPES	Serving Children and Adults in Need, Inc.	Grantee	Serving Children and Adults in Need, Inc.	Primary: Maverick Secondary: Zavala, Dimmit	<a href="http://www.scan-inc.org">www.scan-inc.org</a>	956-724-3177
HOPES	St. Jude's Ranch for Children - Texas Region, Inc.	Grantee	St. Jude's Ranch for Children - Texas Region, Inc.	Comal, Guadalupe	<a href="https://sjrctexas.org">https://sjrctexas.org</a>	210-876-6763
HOPES	United Way of San Antonio and Bexar County	Grantee	United Way of San Antonio and Bexar County	Bexar	<a href="http://www.unitedwaysatx.org">www.unitedwaysatx.org</a>	210-352-7000
		Subgrantee	Any Baby Can of San Antonio	Bexar	<a href="http://www.anybabycansa.org">www.anybabycansa.org</a>	210-227-0170
		Subgrantee	Catholic Charities of San Antonio	Bexar	<a href="http://www.ccaosa.org">www.ccaosa.org</a>	210-222-1294
		Subgrantee	Center for Health Care Services	Bexar	<a href="http://www.chcsbc.org">www.chcsbc.org</a>	210-261-1000
		Subgrantee	Family Service Association of San Antonio	Bexar	<a href="http://www.family-service.org">www.family-service.org</a>	210-299-2400



## Region 8

Program	Provider	Grantee or Subgrantee	Organization Name	County Served	Website / Email Contact	Phone Contact
		Subgrantee	Respite Care of San Antonio	Bexar	<a href="http://www.respitecaresa.org">www.respitecaresa.org</a>	210-737-1212
		Subgrantee	The Children's Shelter - San Antonio	Bexar	<a href="http://www.childrensshelter.org">www.childrensshelter.org</a>	210-212-2500
		Subgrantee	The Center for Health Care Services - SA	Bexar	<a href="http://www.chcsbc.org">www.chcsbc.org</a>	210-261-1000
		Subgrantee	Depelchin Children's Center	Bexar	<a href="http://www.depelchin.org">www.depelchin.org</a>	210-691-3222
		Subgrantee	Martinez Street Women's Center - SA	Bexar	<a href="http://www.mswomenscenter.org">www.mswomenscenter.org</a>	210-908-9772
SMVF	United Way of San Antonio and Bexar County	Grantee	United Way of San Antonio and Bexar County	Bexar	<a href="http://www.unitedwaysatx.org">www.unitedwaysatx.org</a>	210-352-7000; 210-352-7076
		Subgrantee	Big Brothers Big Sisters of San Antonio	Bexar	<a href="http://www.bigmentor.org">www.bigmentor.org</a>	210-225-6322
		Subgrantee	Any Baby Can of San Antonio	Bexar	<a href="http://www.anybabycansa.org">www.anybabycansa.org</a>	210-227-0170
		Subgrantee	Family Service Association of San Antonio	Bexar	<a href="http://www.family-service.org">www.family-service.org</a>	210-299-2400
SYSN	Big Brothers Big Sisters Lone Star	Grantee	Big Brothers Big Sisters Lone Star	All Counties	<a href="http://www.bbbsa.org">www.bbbsa.org</a> ; <a href="http://www.bbbstx.org">www.bbbstx.org</a>	888-887-2447

## Region 8

Program	Provider	Grantee or Subgrantee	Organization Name	County Served	Website / Email Contact	Phone Contact
SYSN	Texas Alliance of Boys & Girls Clubs	Grantee	Texas Alliance of Boys & Girls Clubs	All Counties	<a href="http://www.txbgc.org">www.txbgc.org</a>	512-301-7771
THV (MIECHV)	United Way of San Antonio and Bexar County	Grantee	United Way of San Antonio and Bexar County	Bexar	<a href="http://www.unitedwaysatx.org">www.unitedwaysatx.org</a>	210-352-7000
THV (MIECHV)	Victoria County Health Department	Grantee	Victoria County Health Department	Victoria	<a href="http://www.vcphd.org">www.vcphd.org</a>	361-578-6281
TNFP	Bexar County Hospital District	Grantee	Bexar County Hospital District	Bexar	<a href="http://www.universityhealthsystem.com/services/pregnancy-childbirth/support/nurse-family-partnership">www.universityhealthsystem.com/services/pregnancy-childbirth/support/nurse-family-partnership</a>	210-658-4000
TNFP	The Children's Shelter	Grantee	The Children's Shelter	Primary: Bexar Secondary: Atascosa, Guadalupe, Comal, Kendall, Wilson, Kerr	<a href="http://www.childrensshelter.org">www.childrensshelter.org</a>	210-212-2500

## Region 9

### Region 9

Counties: Andrews, Borden, Coke, Concho, Crane, Crockett, Dawson, Ector, Gaines, Glasscock, Howard, Irion, Kimble, Loving, Martin, Mason, McCulloch, Menard, Midland, Pecos, Reagan, Reeves, Schleicher, Sterling, Sutton, Terrell, Tom Green, Upton, Ward, Winkler

Program	Provider	Grantee or Subgrantee	Organization Name	County Served	Website / Email Contact	Phone Contact
FAYS	BCFS Health and Human Services	Grantee	BCFS Health and Human Services	Crockett, Schleicher, Sutton	<a href="https://discoverbcfs.net/FAYS">https://discoverbcfs.net/FAYS</a>	830-768-2755
FAYS	High Sky Children's Ranch, Inc.	Grantee	High Sky Children's Ranch, Inc.	All Counties	<a href="http://www.staytogetherprogram.org">www.staytogetherprogram.org</a> ; <a href="http://www.highsky.org">www.highsky.org</a>	432-699-1466
FAYS	K'STAR, Inc.	Grantee	K'STAR, Inc.	Kimble, Mason, Menard	<a href="http://www.kstar.org">www.kstar.org</a>	830-896-5404
FAYS (KNP)	New Horizons Ranch and Center, Inc. (Family First)	Grantee	New Horizons Ranch and Center, Inc. (Family First)	McCulloch	<a href="http://www.newhorizonsinc.com">www.newhorizonsinc.com</a> ; <a href="http://www.nh-families.org">www.nh-families.org</a>	325-437-1852
SYSN	Big Brothers Big Sisters Lone Star	Grantee	Big Brothers Big Sisters Lone Star	All Counties	<a href="http://www.bbbsa.org">www.bbbsa.org</a> ; <a href="http://www.bbbstx.org">www.bbbstx.org</a>	888-887-2447
SYSN	Texas Alliance of Boys & Girls Clubs	Grantee	Texas Alliance of Boys & Girls Clubs	All Counties	<a href="http://www.txbgc.org">www.txbgc.org</a>	512-301-7771
THV - GR	Children's Advocacy Center of Greater West Texas	Grantee	Children's Advocacy Center of Greater West Texas	Tom Green	<a href="http://www.cacgreaterwtx.org">www.cacgreaterwtx.org</a>	325-653-4673

## Region 9

Program	Provider	Grantee or Subgrantee	Organization Name	County Served	Website / Email Contact	Phone Contact
THV (MIECHV)	The University of Texas Permian Basin	Grantee	The University of Texas Permian Basin	Primary: Ector; Midland Secondary: Andrews, Crane, Glasscock, Howard, Martin, Upton, Ward, Winkler	<a href="https://www.utpb.edu/academics/colleges/cohshp/departments/community-family-health/index">https://www.utpb.edu/academics/colleges/cohshp/departments/community-family-health/index</a>	432-552-4025

## Region 10

### Region 10

Counties: Brewster, Culberson, El Paso, Hudspeth, Jeff Davis, Presidio

Program	Provider	Grantee or Subgrantee	Organization Name	County Served	Website / Email Contact	Phone Contact
CYD	El Paso Human Services, Inc.	Grantee	El Paso Human Services, Inc.	El Paso	elpasohumanservices.org	915-534-7227
		Subgrantee	Paso Del Norte Center of Hope	El Paso	www.pdncoh.org	915-307-2175
		Subgrantee	Project Vida	El Paso	www.pvida.net/	915-533-7057 ext.208
		Subgrantee	Transmountain Softball League Charitable Trust	El Paso	robertgauna08@gmail.com	915-821-0013
		Subgrantee	YWCA of El Paso	El Paso	ywcaelpaso.org	915-533-7921
FAYS (FRC)	El Paso Center for Children, Inc.	Grantee	El Paso Center for Children, Inc.	El Paso	www.epccinc.org	915-565-5021
		Subgrantee	Paso Del Norte Children's Development Center - El Paso	El Paso	www.pdnchildrens.org	915-544-8484
		Subgrantee	United Way of El Paso County	El Paso	www.unitedwayelpaso.org	915-533-2434
FAYS	High Sky Children's Ranch, Inc.	Grantee	High Sky Children's Ranch, Inc.	Brewster, Culberson, Hudspeth, Jeff Davis, Presidio	www.staytogetherprogram.org; <a href="http://www.highsky.org">www.highsky.org</a>	432-699-1466
HOPES	El Paso Center for Children, Inc.	Grantee	El Paso Center for Children, Inc.	El Paso	www.epccinc.org	915-565-8361

## Region 10

Program	Provider	Grantee or Subgrantee	Organization Name	County Served	Website / Email Contact	Phone Contact
SMVF	Child Crisis Center of El Paso	Grantee	Child Crisis Center of El Paso	El Paso	<a href="http://www.childcrisiselp.org">www.childcrisiselp.org</a>	915-562-7955
SYSN	Big Brothers Big Sisters Lone Star	Grantee	Big Brothers Big Sisters Lone Star	All Counties	<a href="http://www.bbbsa.org">www.bbbsa.org</a> ; <a href="http://www.bbbstx.org">www.bbbstx.org</a>	888-887-2447
SYSN	Texas Alliance of Boys & Girls Clubs	Grantee	Texas Alliance of Boys & Girls Clubs	All Counties	<a href="http://www.txbgc.org">www.txbgc.org</a>	512-301-7771
TNFP	El Paso County Hospital District	Grantee	El Paso County Hospital District	El Paso	<a href="http://www.umcelpaso.org">www.umcelpaso.org</a>	915-544-1200

**Region 11**

Counties: Aransas, Bee, Brooks, Cameron, Duval, Hidalgo, Jim Hogg, Jim Wells, Kenedy, Kleberg, Live Oak, McMullen, Nueces, Refugio, San Patricio, Starr, Webb, Willacy, Zapata

Program	Provider	Grantee or Subgrantee	Organization Name	County Served	Website / Email Contact	Phone Contact
CYD	City of Corpus Christi	Grantee	City of Corpus Christi	Nueces	www.cctexas.com/parks	361-826-4028
		Subgrantee	Boys & Girls Club of Corpus Christi	Nueces	www.bgccb.org	361-853-2505
		Subgrantee	Communities in Schools - Corpus Christi	Nueces	www.ciscoastalbend.org	361-696-4030 ext.1
		Subgrantee	YWCA of Corpus Christi	Nueces	www.ywcacc.org	361-857-5661 ext.103
CYD	Rio Grande Valley Empowerment Zone Corporation	Grantee	Rio Grande Valley Empowerment Zone Corporation	Willacy	www.rgvez.org	210-434-5531
		Subgrantee	Lyford Consolidated Independent School District	Willacy	lyfordcisd.net	956-347-3910
		Subgrantee	Raymondville Independent School District	Willacy	raymondvilleisd.org	956-689-8181

Program	Provider	Grantee or Subgrantee	Organization Name	County Served	Website / Email Contact	Phone Contact
CYD	Southwest Keys Programs, Inc.	Grantee	Southwest Keys Programs, Inc.	Webb	www.southwest key.org	956-424-3276
CYD	Good Samaritan Center of San Antonio dba Good Samaritan	Grantee	Good Samaritan	Cameron	goodsamtx.org	512-462-2181
FAYS	Buckner Children and Family Services, Inc.	Grantee	Buckner Children and Family Services, Inc.	Brooks, Cameron, Hidalgo, Kenedy, Willacy	www.buckner.org	956-630-6285
FAYS	Circles of Care	Grantee	Circles of Care	Nueces, Kleberg and Jim Wells	www.circlesofcareinc.org	361-852-3812
FAYS	Connections Individual and Family Services, Inc.	Grantee	Connections Individual and Family Services, Inc.	Comal, Guadalupe, Wilson, Karnes, Atascosa, Frio, Zavala, Gonzales, Caldwell, Bastrop, and Lee	www.connectionsifs.org	830-629-6571 Ext. 232
FAYS	Serving Children and Adults in Need, Inc.	Grantee	Serving Children and Adults in Need, Inc.	Dimmit, Duval, Jim Hogg, La Salle, Maverick, Starr, Webb, Zapata	www.scan-inc.org	956-724-3177
Fatherhood EFFECT	BCFS Health and Human Services	Grantee	BCFS Health and Human Services	Cameron, Taylor	www.discoverbcfs.net	903-526-0882
HIP	BCFS Health and Human Services	Grantee	BCFS Health and Human Services	Primary: Cameron, Hidalgo Secondary: Willacy, Starr	www.discoverbcfs.net/HIP/ Discoverbcfs.net/Harlingen	956-230-3849



Region 11

Program	Provider	Grantee or Subgrantee	Organization Name	County Served	Website / Email Contact	Phone Contact
HOPES (FRC)	BCFS Health and Human Services	Grantee	BCFS Health and Human Services	Cameron	Discoverbcfs.net/Harlingen; https://discoverbcfs.net/HOPES/	956-230-3849
HOPES (FRC)	Easter Seals Rio Grande Valley	Grantee	Easter Seals Rio Grande Valley	Hidalgo	www.easterseals-rgv.org	956-631-9171
HOPES	Education Service Center Region 2	Grantee	Education Service Center Region 2	Primary: Nueces Secondary: San Patricio, Kleberg	https://www.esc2.net/	361-561-8604
HOPES	Serving Children and Adults in Need, Inc.	Grantee	Serving Children and Adults in Need, Inc.	Webb	www.scan-inc.org	956-724-3177
SMVF	The Council on Alcohol & Drug Abuse - Coastal Bend	Grantee	The Council on Alcohol & Drug Abuse - Coastal Bend	Kleberg, Nueces	www.coada-cb.org	361-854-9199
SYSN	Big Brothers Big Sisters Lone Star	Grantee	Big Brothers Big Sisters Lone Star	All Counties	www.bbbsa.org; www.bbbstx.org	888-887-2447
SYSN	Texas Alliance of Boys & Girls Clubs	Grantee	Texas Alliance of Boys & Girls Clubs	All Counties	www.txbgc.org	512-301-7771
TNFP	City of Laredo	Grantee	City of Laredo	Primary: Webb Secondary: Zapata, Jim Hogg	https://www.cityoflaredo.com/health/Healthindex.htm	956-523-7848
TNFP	Doctors Hospital Renaissance	Grantee	Doctors Hospital Renaissance	Hidalgo, Willacy	www.dhrhealth.com/services/women-hospital	956-362-4190

Program	Provider	Grantee or Subgrantee	Organization Name	County Served	Website / Email Contact	Phone Contact
THV (MIECHV)	Easter Seals Rio Grande Valley	Grantee	Easter Seals Rio Grande Valley	Hidalgo, Cameron, Willacy, Hidalgo, Starr	<a href="http://www.easterseals-rgv.org">www.easterseals-rgv.org</a>	956-631-9171
THV (MIECHV)	United Way of Coastal Bend	Grantee	United Way of Coastal Bend	Nueces	<a href="http://www.uwcb.org">www.uwcb.org</a>	361-882-2529