



DFPS Referrals Program Overview

Mission

The mission of the Windham School District (WSD), in partnership with its stakeholders, is to provide quality educational opportunities.

Goals

The goals of the district in educating its students are to:

1. reduce recidivism;
2. reduce the cost of confinement or imprisonment;
3. increase the success of former inmates in obtaining and maintaining employment;
4. provide an incentive to inmates to behave in positive ways during confinement or imprisonment.

Texas Education Code §19.003



Academics 1/2/3

The Academic program provides adult education and literacy instruction for students who are working toward earning a Texas High School Equivalency (HSE) certificate. The high school program, located at the Matthew Gaines campus in Midway and the Jovita González de Mireles campus in Gatesville, serves men and women 26 and under who are working towards earning a standard high school diploma.

Parenting

Windham's Parenting program addresses parenting skills and family wellness. Based on Acceleron® Prep to Parent program, the communication-based, interactive curriculum supports the development of healthy family relationships and teaches compassionate assertiveness, empathic/active listening, empowerment, and other skills to strengthen family relationships.



Cognitive Intervention Program (CIP)

CIP provides facilitated instruction in critical reasoning skills, problem solving, anger management, impulse control, and overcoming criminal thinking. It teaches students to examine and change thinking that leads to criminal behavior.

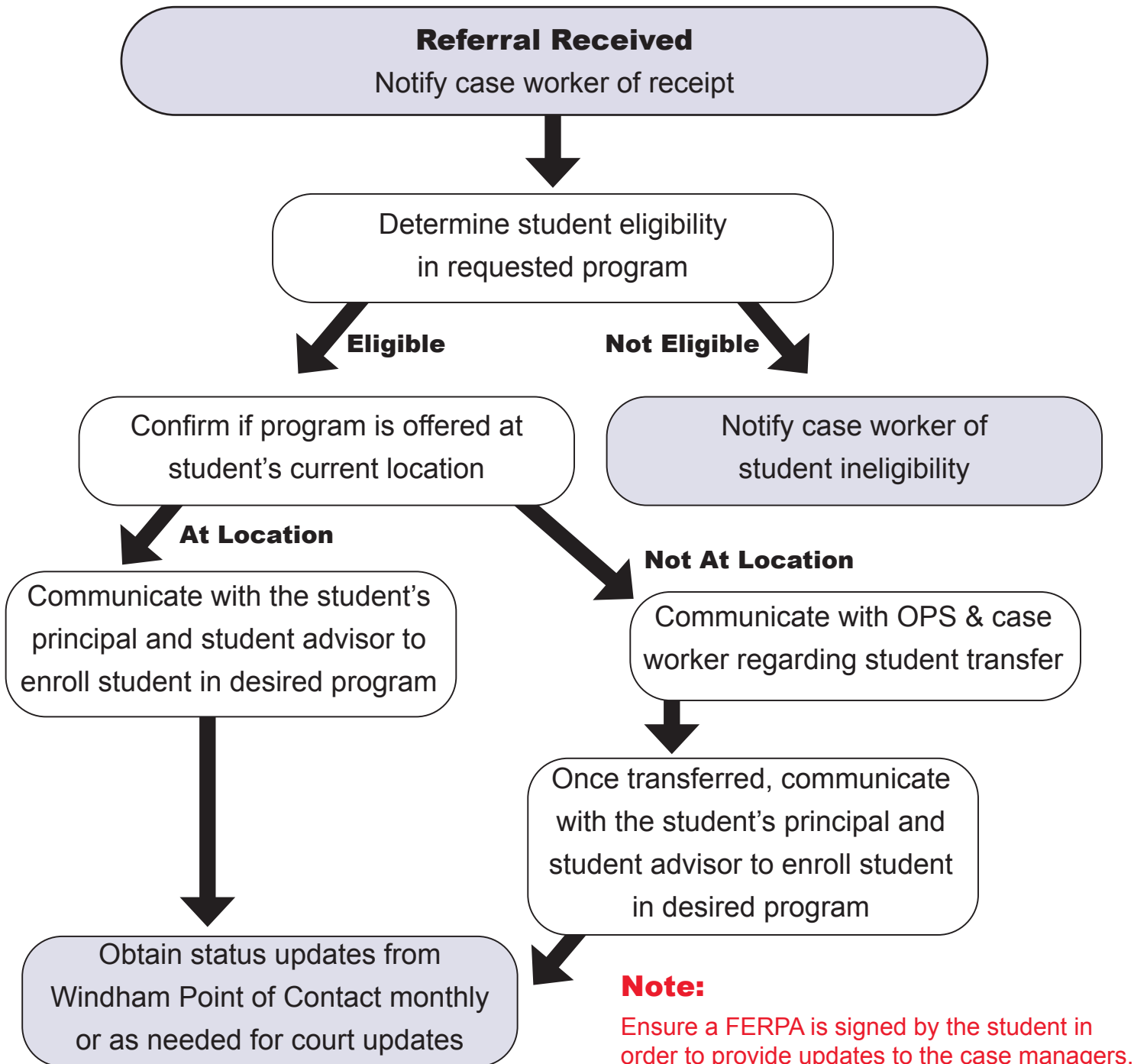
CHANGES (*Changing Habits and Achieving New Goals to Empower Success*)

CHANGES is offered to students within two years of their anticipated reentry date. It provides life skills modules to prepare students for reintegration into their communities. The curriculum includes units of instruction on personal development, healthy relationships, living responsibly, drug education, living well (health), putting together a new start (anger management), and going home (getting and keeping a job). Nutrition and health topics are also incorporated.

Career and Technical Education (CTE)

CTE provides specific vocational training designed to meet entry-level industry standards in approximately 40 trade areas. These include courses aimed at facilitating training for students approaching reentry at various campuses. Through quality instruction and relevant best practices, this programming helps students obtain industry-based certifications, learn essential soft skills for sustained employability and explore possible career connections. Training includes comprehensive shop programs in priority occupations to provide training for specific career opportunities and facility work opportunities, apprenticeship programs, and on-the-job training programs coordinated with the workforce industry.





Use the QR code or link provided to complete a DFPS Referral:

<https://bit.ly/WSDReferral>

Windham Point of Contact:

Liz Morris at Liz.Morris@wsdtx.org

