

Public Private Partnership Meeting

April 8, 2022

Welcome!

Introductions

PPP Co-Chairs - Jenifer Jarriel, Deneen Dryden, and Trisha Thomas

Prevention and Early Intervention Updates

Rachel Duer, Director of Faith-Based and Community Engagement
and

Mosley “Moe” Hobson, DFPS Disproportionality Manager

SSCC Presentations

- Saint Francis Community Services
- 2Ingage
- Belong
- Our Community Our Kids



Saint Francis
MINISTRIES



Saint Francis Updates – Stage II

Dallam	Sherman	Hansford	Ochiltree	Lipscomb	
Hartley	Moore	Hutchinson	Roberts	Hemphill	
Oldham	Potter	Carson	Gray	Wheeler	
Deaf Smith	Randall	Armstrong	Donley	Collingsworth	
Parmer	Castro	Swisher	Briscoe	Hall	Childress
Bailey	Lamb	Hale	Floyd	Motley	
Cochran	Hockley	Lubbock ★	Crosby	Dickens	King
Yoakum	Terry	Lynn	Garza		

- Go Live on March 2nd
 - Transitioned all cases and began case management functions
 - Transitioned 55% of active case workers to Saint Francis
 - Focused on engaging team members early and frequently
- The Next 90 Days
 - Focused on hiring an additional 100 team members to support children and families
 - Hiring quality leadership
 - Shaping the culture within our work
 - Creating manageable caseloads

Partnership through Community

Community Work & Partnerships

- Collaborate with Child Welfare Boards and Community Resources
 - We have engaged 25 child welfare boards across 41 counties
 - Increased community presence through social media awareness
 - Working with 46 partners across the Panhandle for child family visitation centers and resources. This includes:
 - Local churches
 - YWCA and YMCAs
 - Community Centers
 - Rainbow Rooms



eliminating racism
empowering women
ywca



FOR YOUTH DEVELOPMENT[®]
FOR HEALTHY LIVING
FOR SOCIAL RESPONSIBILITY



Capacity-Building



Capacity-Building: RTCs

450% increase in residential capacity in Region 1

- Collaboration with SSCCs for Yellow Canyon Academy – 48 beds
- Vision Quest – 20 beds
- Fostering Life Youth Ranch – Coming Summer 2022 – 16 beds
- Saint Francis Ministries Residential – Coming Summer 2022 – 16 beds

Capacity-Building

SSCC Shared Capacity Plan

Foster Care Recruitment Blitz

- Collaboration with SSCCs, TACFS, and Daley Solutions
- Focuses on recruitment statewide and family finding
- Create fostertx.org website, social media, and outward channels to drive recruitment



Capacity-Building

IT TAKES HEART. IT TAKES COMMUNITY. IT TAKES GUTS. IT TAKES BRAVERY. IT TAKES HUMILITY. IT TAKES EMPATHY. IT TAKES PRAYER. IT TAKES STRENGTH. IT TAKES PATIENCE. IT TAKES EVERYTHING. IT TAKES PERSEVERANCE. IT TAKES LOVE.



Saint Francis Capacity-Building

- Kinship Support – Disbursing \$400,000 to support kinship families
 - Supporting our kinship families
- Treatment Foster Care – Creating collaborations in developing TFC homes
- Placement Incentives – Incentivizing placement children over 10 years of age and sibling groups.
- *It Takes Everything* – New campaign for the Panhandle to bring awareness of the needs in the various counties
- Referred 135 families to our partners network over the past quarter



Saint Francis
Texas

Thank you for your time!

Cristian Garcia, Vice President of Child and Family Services

Cristian.Garcia@St-Francis.org

(806) 746-2085

Public Private Partnership

April 8, 2022





Catchment 2: FY21 Year-To-Date Performance – Children in Conservatorship

Performance Outcome	Indicator	Baseline / Target (FY17-18 Avg)	FY20	FY21	FY22 Q1
Safety	Safe in foster care	100%	98.9%	99.3%	100%
Placement Stability	Foster care placements per child	1.40	1.34	1.42	1.14
Least Restrictive Placement	Percent placement days in a home setting	87.0%	86.7%	88.1%	88.5%
Placement Proximity	Placed within 50 miles	46.9%	45.0%	42.3%	39.7%
Maintaining Connections	Sibling groups placed together in foster care	67.3%	62.4%	61%	63.0%
	Children Placed with Kin at 60 days ³	47.0%	50.1%	46.9%	-
Youth are fully prepared for adulthood	Turning 18 years old completing PAL	89.5%	88.7%	100%	100%
	16-year-olds with a driver's license or ID	-	33.6%	33.1%	38.7%
Children and youth participate in decisions that impact their lives	Child attendance at court hearings	-	79.5%	96.7%	92%
Workforce Capacity	Caseworker Turnover	17.1%	59.6%	56.1%	65.5%

Success

Continue to lower case load for permanency case managers



Court reports – Timeliness



New GRO in Region 2



Coordinate with other SSCC's to develop capacity plan



No CWOP

Areas of Focus

Workforce
Turnovers

Recruiting families
within the 50 miles
geography

Recruiting families
to take siblings

Quality of Report

Increase Kinship
placements within
60 days

Transforming Foster Care



Who We Are

A division of SJRC Texas

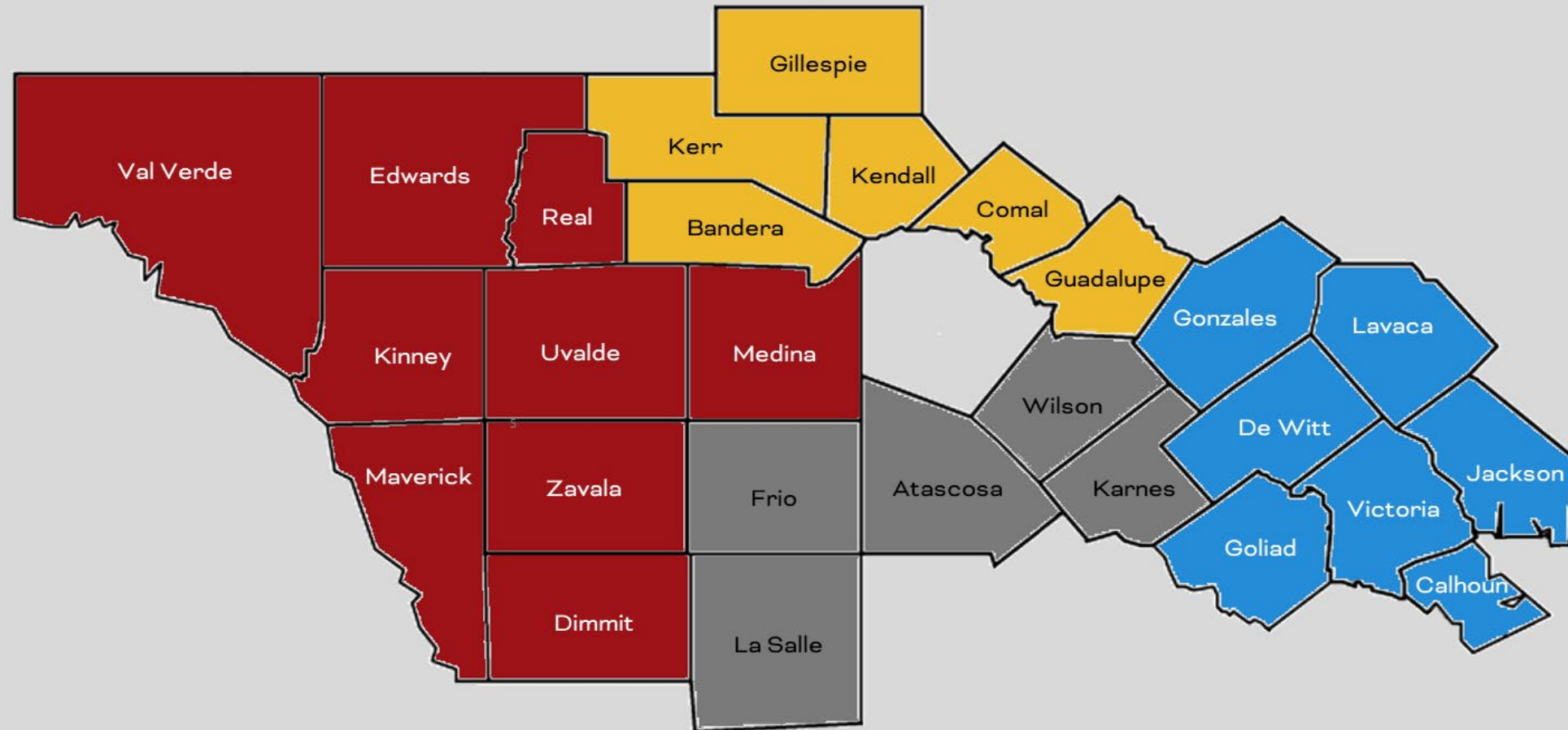


Lead provider for community-based care for Region 8b/South Central and Hill Country, covering 27 counties

Where is South Central and Hill Country (8b)?



North
East
South
West





Parents as Teachers®



Unique Nature of Belong

- Consistent communication/keen attention to detail
- Community Collaboration
- Provider assistance and support
- Prevention Department with a Parents as Teachers & C.A.R.E. program
 - Provides evidence based in-home support for parents and strengthens families before a crisis
- Targeted approach to child's best interest and permanency

Timeline of Events

CBC progresses in stages, moving responsibility for foster care placement, case management and services from the state to Belong.

Start Up
April 2021

Stage I
October
2021

Stage II
Start Up- April
1, 2022



Our Progress



Total **235** placements

(as of March 24, 2022)

Population:

- Total population: 1044
- Paid Population: 574
- Non-Paid population: 470
- Children in Belong Care: 540

Assuring goals of CBC:

- Proximity close to removal address
- Least restrictive environments, family setting



Placement Progress

(as of March 24, 2022)

Nearly **70%** of 8b children
are placed in a foster home
or residential operation within

Region 8 (including Bexar Co.).



Of youth currently in Belong network,

77%

of paid placement days are spent in a

family setting.

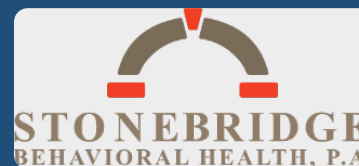


Placement Preservation

(as of March 24, 2022)

To ensure appropriate behavioral and mental health services are available, Belong is building an integrative treatment center, concentrated on support services for children and families.

- Belong completed disruption mitigation staffings for 21 youth for whom discharge notices had been submitted.
 - 14 of those 21 discharge notices were fully rescinded, and youth *remained* in their placement.
- Services utilized to *preserve* placement –
 - Chosen
 - Renewing Family Strengths
 - Educational Supports
 - Parents As Teachers & C.A.R.E. Programs
 - Exceptional Care
 - Transportation Support
 - Nursing Services
 - YES Waiver
 - Mentor Programs



In-home parenting support to promote permanency and stability.

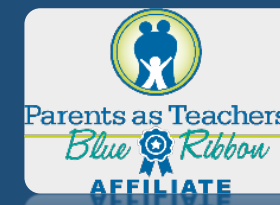
Parents as Teachers (PAT)

C.A.R.E.

(Case management, Assessment, Resources, Education)

Fatherhood Initiative

Support Groups



SSCC Supervision

*The Belong House is utilized as SSCC Supervision for emergency use **only**.*

It had been

over 100 days

since a youth was at the Belong House.



From Go Live Date of October 27, 2021 there have only been 5 total youth in SSCC Supervision – each at separate times and none more than 5 consecutive days.

Capacity Building Efforts

- Contracted with more than **118** providers and **160** programs in network.
- Capacity **Preservation**:
 - Continued partnership with Chosen to provide in-home support services for families to promote permanency and mitigate disruption of placement.
 - Utilization of Renewing Family Strengths program to promote change of behaviors that would otherwise result in discharge of that youth.
 - Continued implementation of Belong PAT and C.A.R.E. services to support **reunification and permanency**.
- Capacity **Building** through our SSCC Collaborative:
 - Foster home recruitment campaign underway in collaboration with TACFS.
 - Collaboration with South Texas Alliance for Orphans to target faith community for recruitment of teen foster homes.
 - Partnership with Chosen to implement Treatment Foster Care program.
 - TACFS and SSCC collaborative to bring safety enhancements to providers across the state



Capacity Building – New Braunfels

- Opening a 16-bed home in New Braunfels in partnership with Touchstone Alliance to serve our highest needs youth.
- Will provide a step-down program and youth will receive holistic treatment services in order to advance to a less restrictive setting.
- Will also be utilized for SSCC Supervision as needed.



Capacity Building –TACFS and SSCC Collaboration

Safety-Related Resources for Organizations

All four current SSCCs and TACFS are working to make tools and trainings available to providers to enhance safety. Providers may access, at no cost, the following resources:

1. Praesidium's Training for Organizational Leaders – Administrators and leaders will learn strategies and research-based abuse risk management techniques, as well as ways to equip staff and supervisors with skills and best practices to prevent abuse.
2. Praesidium's Organizational Self-Assessment – This online self-assessment tool will allow organizations to quickly and confidentially learn the strength of their policies and practices designed to keep those in their care safe from abuse.
3. Texas Center for Child and Family Studies Bystander Intervention Training - Bystander intervention is when a person notices a problematic/unsafe/inappropriate situation, then takes on the personal responsibility to take some type of action to intervene. Staff will be given tools to feel empowered to do something to prevent potential abuse or harmful situations.



Provider Support & Consumer Affairs

- Coordinated Provider meetings to staff youth and determine needed supports so providers could maintain placement of youth.
- Regularly completed emergency YFT reads and submitted Exceptional Care requests when Providers reported that a child had higher needs than expected.
- Issued waivers to **keep siblings** placed **together**.
- Facilitated a variety of trainings to ensure Provider compliance.
- Hosted Provider Meet & Greets with Regional Directors.
- Connected Providers with more than **150** community resources.
- No formal SSCC complaints have been reported to Belong Consumer Affairs.



“Our interactions and the support we’ve received with Belong has been very good. We appreciate the effort and the level of communication.”

- Provider

Community Engagement & Collaborative Efforts

Establish Belong's presence and educate the community on Community-Based Care, as well as foster care and adoption needs in all 27 counties.

- Attended more than **175** community events.
- Presented to over **350** community groups including Commissioners Courts, state elected officials, ad litem conferences and more.
- Participated in many Child Welfare Board and Community Resource Coordination Group meetings.
- Faith-Based Coordinator has met with over **50** churches and assisted with donation efforts for youth in care.
- Supported donation efforts for Rainbow Rooms as well as youth and families in need.
- Partner with CASA to conduct Seneca searches to help identify appropriate family for youth.
- Hold meetings with legal stakeholders and testify in court hearings for youth.
- Assist DFPS with hospital sitting shifts.
- Provide transportation support to assist DFPS.
- Host disruption mitigation staffings with DFPS and other partners.
- Hold weekly intake staffing with Belong, DFPS and community partners to find least restrictive placements, always focusing on permanency goal and best interest of the child

CHILD ABUSE PREVENTION MONTH

Belong
Lunch + Learn
Virtual Series

THURSDAY, APRIL 7, 12:00-1:15 PM
Catholic Charities - St. PJ's Children's Home
Child Abuse and Neglect: Importance of Reporting
Overview of Texas reporting laws and the overall process and resources on how to make a report.

FRIDAY, APRIL 8, 12:00-1:00 PM
Jací Gonzales
SJRC Texas | Belong Chief Prevention Officer
Parenting & Prevention Overview
Learn more about the free, available resources and support groups for caregivers like the Parents as Teachers program, C.A.R.E. and more.

THURSDAY, APRIL 14, 12:00-2:30 PM
Christian Benavides
Office of the Governor, Child Sex Trafficking Team
CSE-IT Training
Learn more about the Commercial Sexual Exploitation Identification Tool (CSE-IT) that has the potential to help us better understand — at the agency, county, or state level — the prevalence and particular characteristics of young people who experience sexual exploitation.

THURSDAY, APRIL 21, 12:00-1:15 PM
ChildSafe
NetSmartz
NetSmartz Internet Safety curriculum is from the National Center for Missing & Exploited Children aimed at providing adult caregivers ways to keep children safe online.

THURSDAY, APRIL 28, 12:00-1:15 PM
Dr. Helen Mireles
On behalf of Coalition to Combat Human Trafficking
Characteristics of Human Trafficking
Gain an understanding of Human Trafficking including red flags, who is vulnerable and why, and explore myths involving human trafficking. Recognize factors that lead to an increased risk, trauma associated with victims, its impact and available resources to assist.

Register at sjrcbelong.org/events

Contact Us

Tara Roussett, CEO
210.386.5025
troussett@sjrctexas.org



Thank You!



Region 3b update for Public Private Partnership Group

April 8, 2022

Updates:

- Only 1 child in CWOP since October, 2021.
- 13 Children placed out of state. (Down from high of 25 in Sept 2021.)
- 7 Children in Temporary Emergency Placement. (Down from high of 25 in Dec, 21)
- Youth placed in kinship homes increased from 19% to 24% of total youth since March, 2020.

Summary: While placement options for high needs youth are still difficult to find, capacity building efforts are making an impact.

Temporary Emergency Placement in 3b:

- 94.3% in licensed family setting
- 15% of placements result in long term placement in same home
- 39.8% of placements are 10 days or less
- Average (mean) stay is 16.1 days

Summary: TEP placements are rarely in congregate care and provide an important, licensed option to care for children while long term placement is determined.



our community our kids

a division of ACH Child and Family Services

Praesidium Update

SSCCs/Texas Alliance of Child and Family Services

Rider 15 Report

DFPS Office of Data and Systems Improvement

OCOK: FY22 Year-To-Date Performance – Children in Conservatorship (Stage II)

Performance Outcome	Indicator	Baseline FY18-19	FY20 ¹	FY21	FY22 Q1
Safety	Safe in foster care	100%	99.0%	97.6%	99.8%
Placement Stability	Foster care placements per child ²	1.46 (Q1: 1.16)	1.47	1.52	1.17
Least Restrictive Placement	Percent placement days in a home setting	83.2%	84.4%	83.0%	82.1%
Placement Proximity	Placed within 50 miles	73.2%	77.7%	72.0%	71.0
Maintaining Connections	Sibling groups placed together in foster care	65.9%	67.3%	63.0%	62.3%
	Children Placed with Kin at 60 Days ³	19.2%	21.6%	26.1%	-
Youth are fully prepared for adulthood	Turning 18 years old completing PAL	77.6%	81.1%	91.8%	87.0%

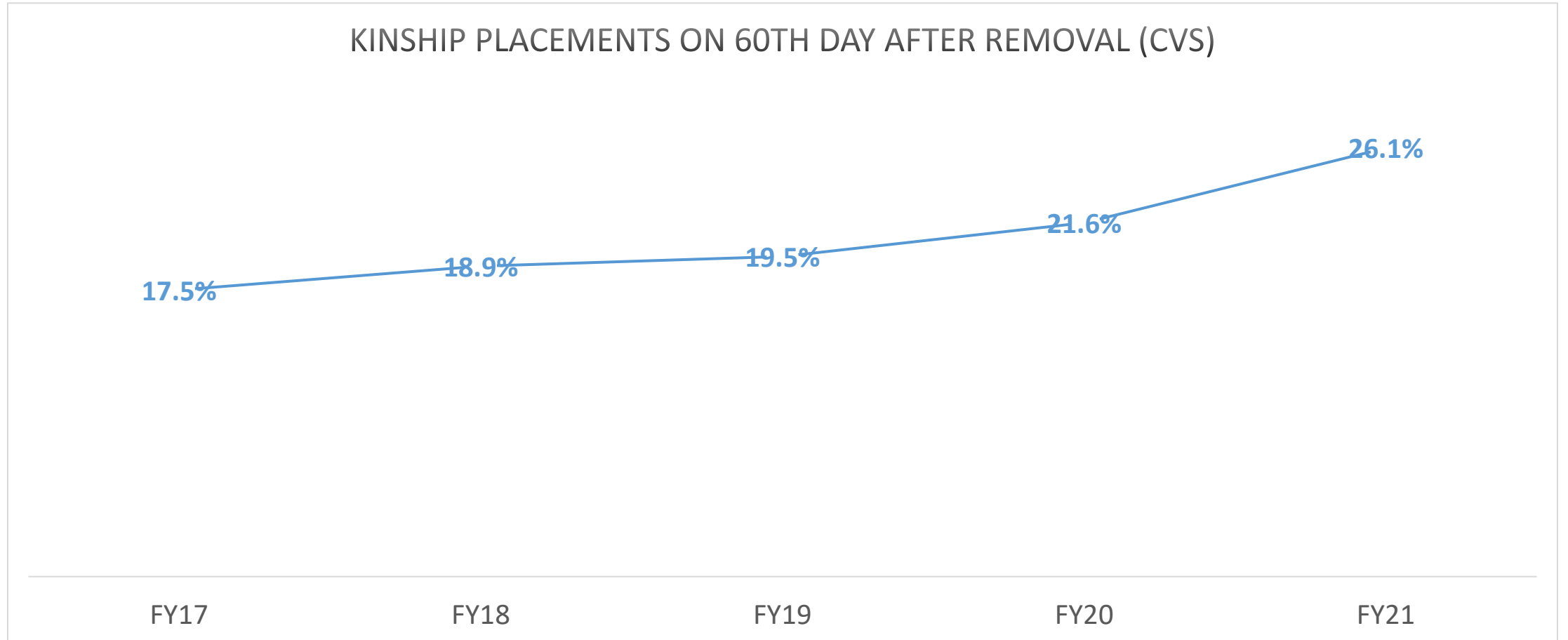
OCOK transitioned to Stage I in FY15.

¹ FY20 was a transition year- OCOK transitioned to Stage II in FY20 Q3.

² Partial-year data are not comparable to full-year data for Placement Stability.

³ Kinship measure is delayed by one quarter.

OCOK Success Highlight: Kinship



2Ngage: FY22 Year-To-Date Performance – Children in Conservatorship (Stage II)

Performance Outcome	Indicator	Baseline (FY17-18 Avg)	FY20 ¹	FY21	FY22 Q1
Safety	Safe in foster care	100%	98.9%	99.1%	100%
Placement Stability	Foster care placements per child ²	1.40 (Q1: 1.14)	1.34	1.43	1.14
Least Restrictive Placement	Percent placement days in a home setting	87.8%	87.7%	88.6%	88.5%
Placement Proximity	Placed within 50 miles	46.9%	45.0%	38.8%	39.7%
Maintaining Connections	Sibling groups placed together in foster care	67.3%	62.4%	60.4%	63.0%
	Children Placed with Kin at 60 days ³	47.0%	50.1%	46.6%	-
Youth are fully prepared for adulthood	Turning 18 years old completing PAL	89.5%	88.7%	100.0%	100%

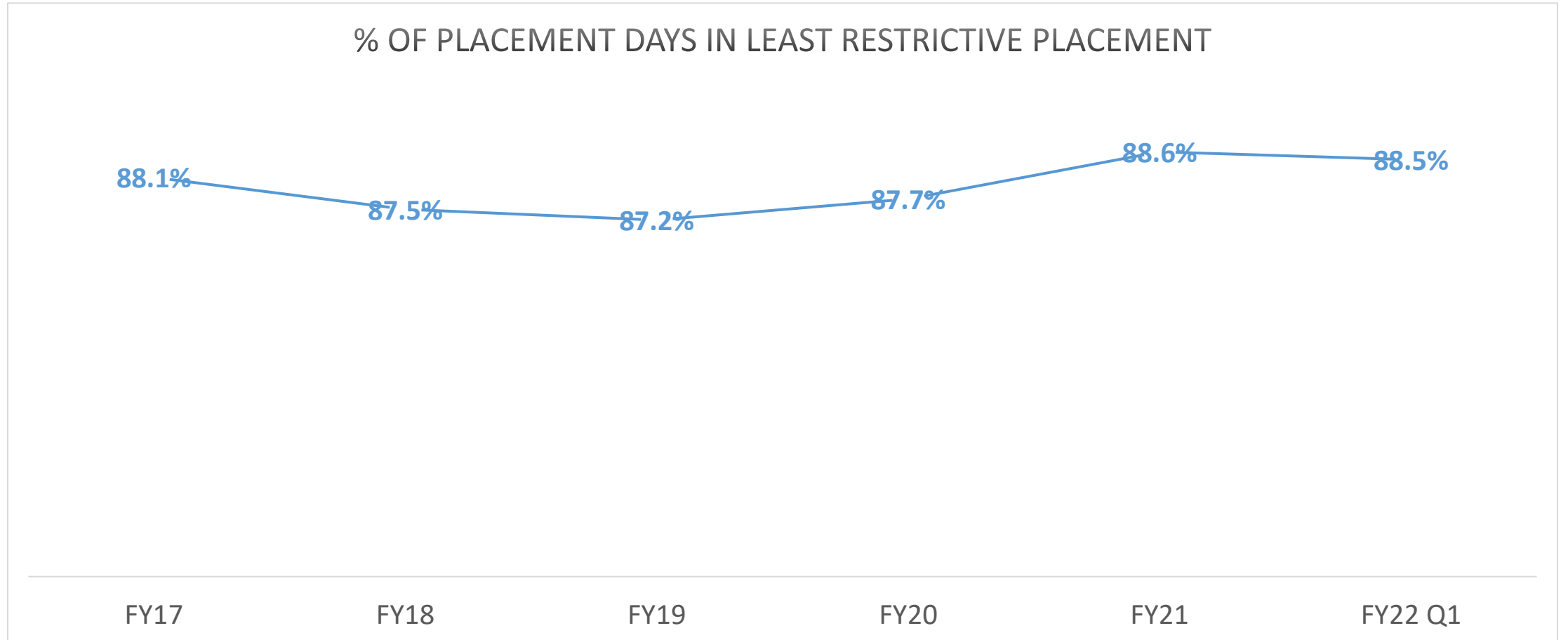
2INgage transitioned to Stage I in FY19.

¹ FY20 was a transition year- 2INgage transitioned to Stage II in FY20 Q4.

² Partial-year data are not comparable to full-year data for Placement Stability.

³ Kinship measure is delayed by one quarter.

2ngage Success Highlight: Least Restrictive Setting



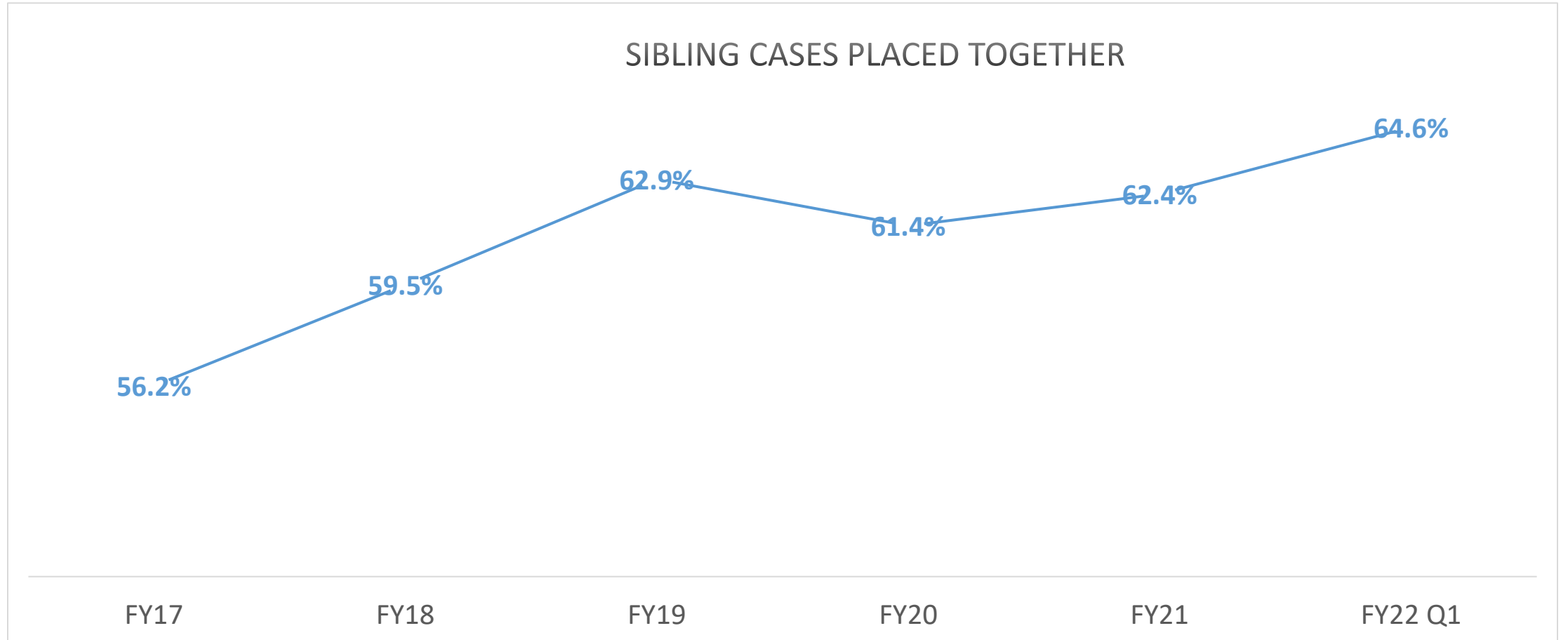
Catchment 1: FY22 Year-To-Date Performance – Children in Paid Care (Stage I)

Performance Outcome	Indicator	Baseline (FY18-19 Avg)	FY21	FY22 Q1
Safety	Safe in foster care	100%	97.8%	99.6%
Placement Stability	Foster care placements per child ¹	1.48 (Q1: 1.16)	1.59	1.19
Least Restrictive Placement	Percent foster care days in a foster home	68.8%	69.2%	69.5%
Placement Proximity	Placed within 50 miles	44.6%	43.0%	42.4%
Maintaining Connections	Sibling groups placed together in foster care	61.2%	62.4%	64.6%
Youth are fully prepared for adulthood	Turning 18 years old completing PAL	92.2%	92.5%	83.3%

St. Francis transitioned to Stage I in FY20.

¹ Partial-year data are not comparable to full-year data for Placement Stability.

St. Francis Success Highlight: Sibling Group Placements

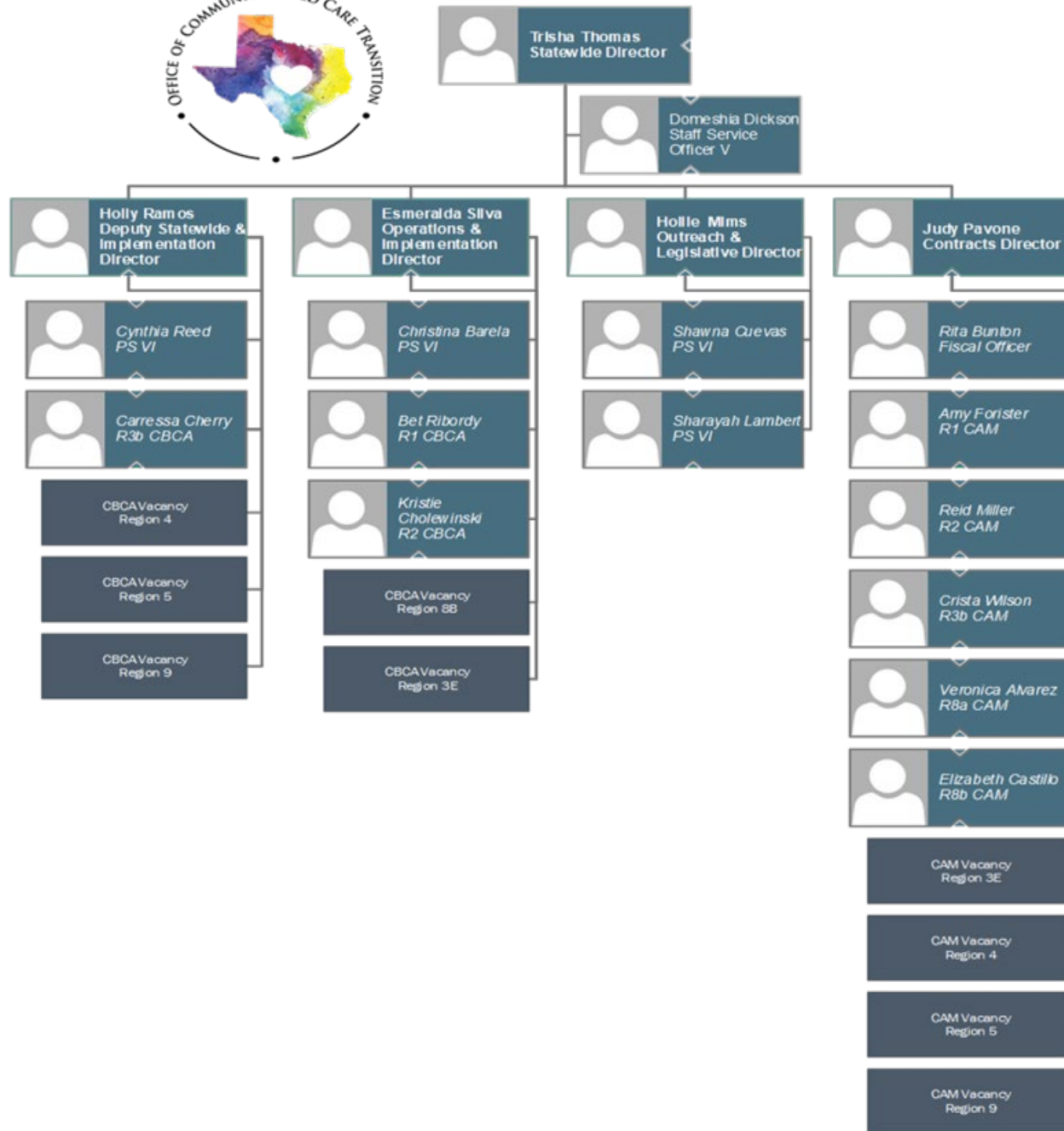


QRTP Update

Deneen Dryden, CPS Associate Commissioner

Office of Community-Based Care Transition Updates

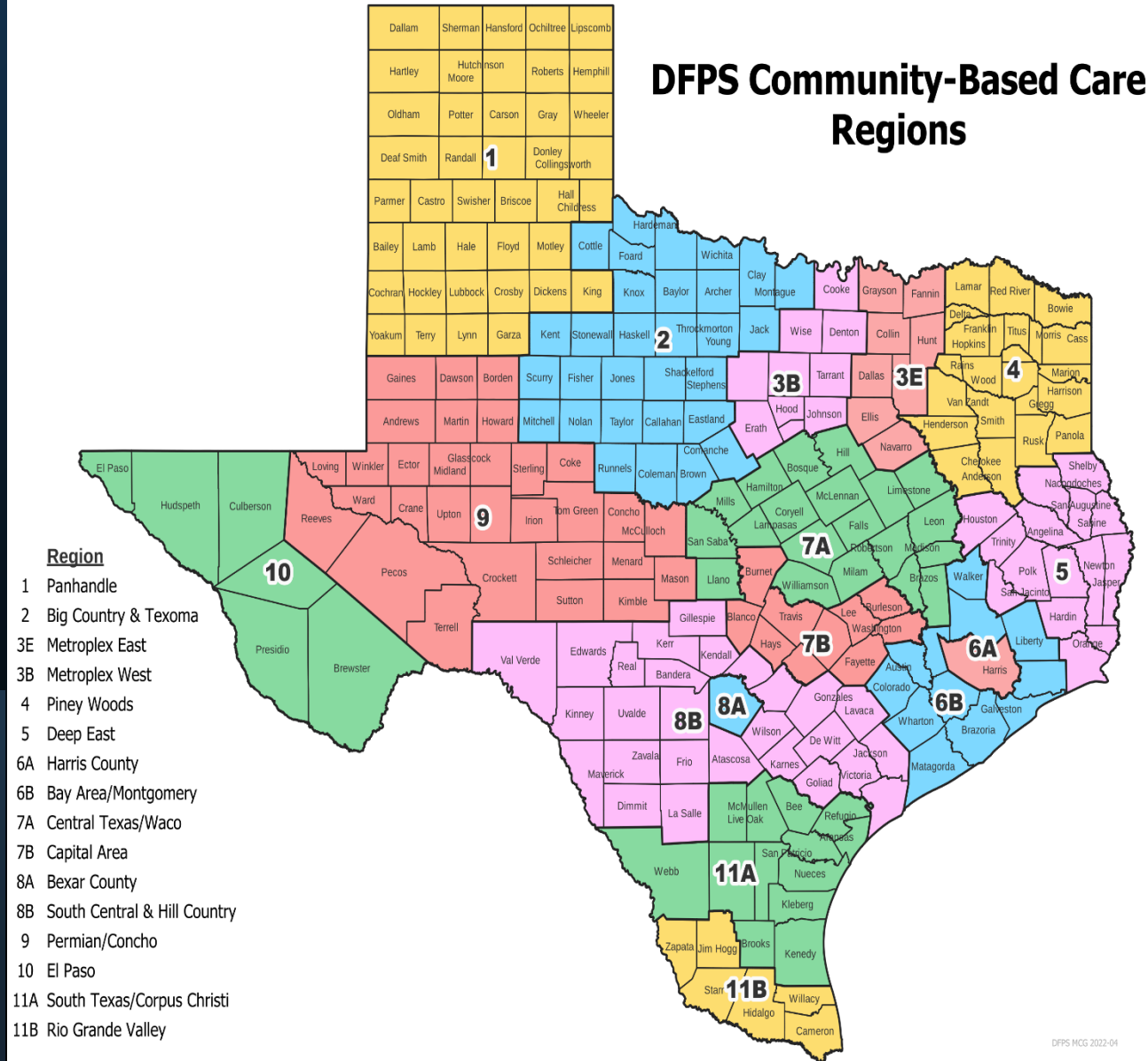
Trisha Thomas, CBC Statewide Director



OCBCT Organizational Structure

Catchment Renaming Project

DFPS Community-Based Care Regions



Closing

- Questions?
- Thank you for being here!